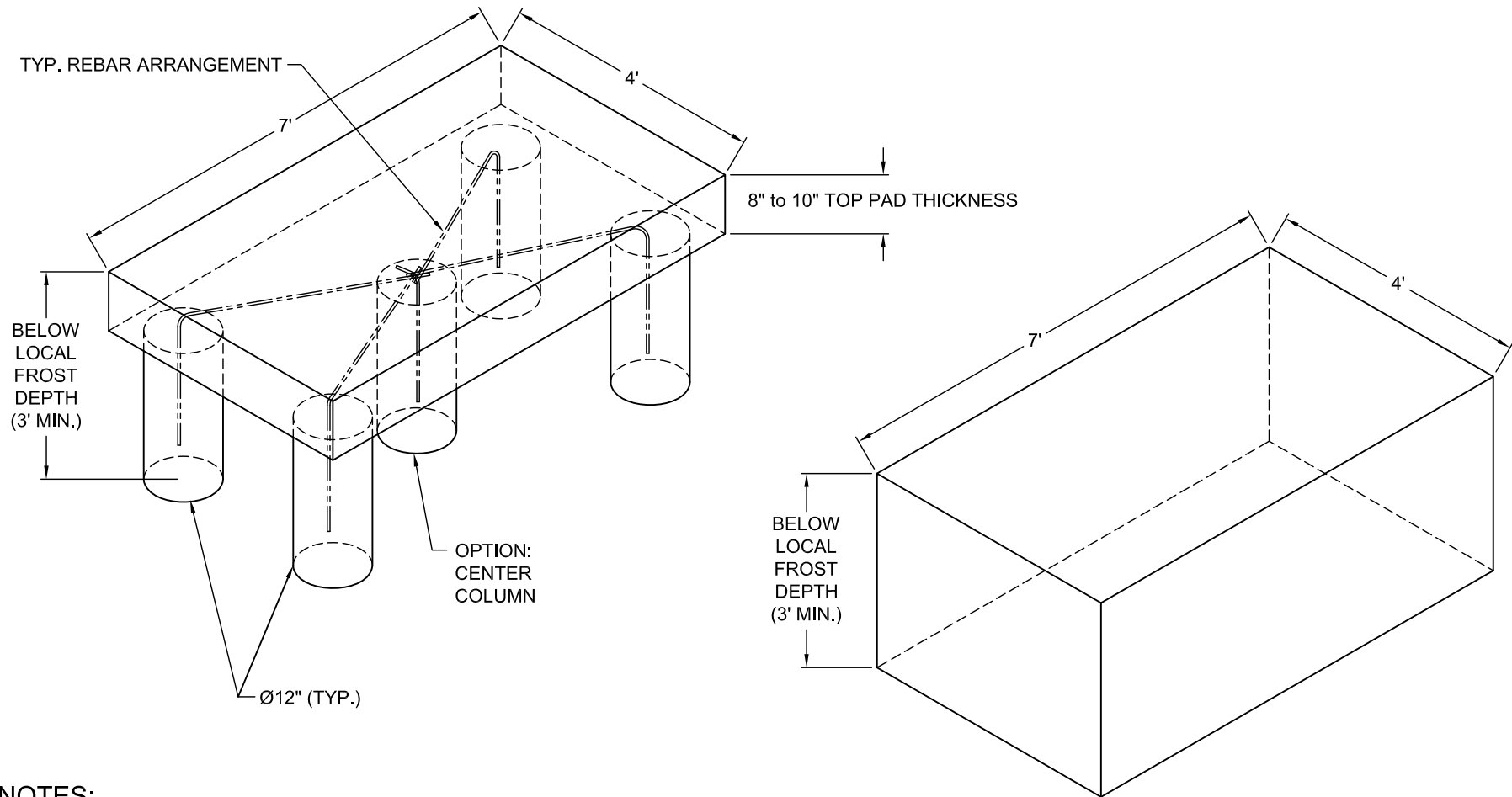


OPTION #1:

(4) or (5) MIN. 12" AUGURED HOLES, RE-BAR, AND AN 8" TO 10" TOP PAD




NOTES:

- * ALL PAD DEPTHS SHOULD BE BELOW LOCAL FROST DEPTH
- * TOP OF PAD SHOULD BE FLAT AND LEVEL

OPTION #2:

FULL CONCRETE PAD WITH RE-BAR WHERE APPLICABLE

DO NOT SCALE			NOTICE		Date: 12/21/05
Rev.:	Description:	Date:	THE INFORMATION CONTAINED ON THIS DOCUMENT IS CONFIDENTIAL. ANY DISSEMINATION, UNAPPROVED DISCLOSURE OR COPYING OF THIS INFORMATION IS STRICTLY PROHIBITED.		Drn. By: MKS
A	Conduit locations were moved outside the pad	07/18/08 MS			Supercedes: 7/12/04
					Dwg.: 102-P
			UNLESS OTHERWISE SPECIFIED DIMENSIONS ARE IN INCHES ANGLES ± 1° X/16 ± 1/32, .XX ± .01, .XXX ± .005		 Berlin Heights, Ohio FAX (419) 588-3514
			Title: Operator PAD Layout / Options		