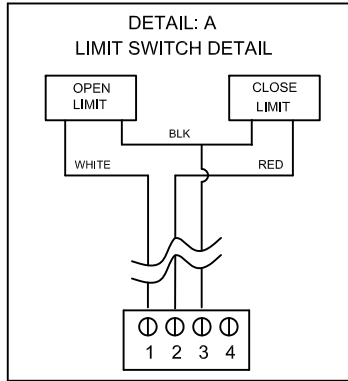


NOTE: ALL ACC. ARE
OPTIONAL EQUIPMENT

TABLE "A"

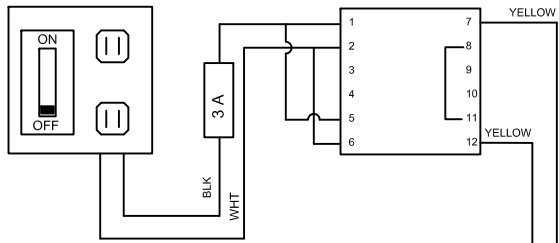
- 1, 2 & 3 - OPEN INPUTS
- 4 - AUXILIARY OPEN INPUT
- 5 - REVERSING/SAFETY INPUT

- 6 - CLOSE GATE INPUT (CLOSE LOOP)
- 7 - BACK AWAY - FREE EXIT LOOP
- 8 - SHADOW LOOP
- 9, 10, 11, & 12 - COMMON (0vdc)

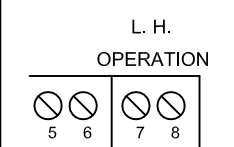
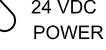
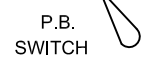
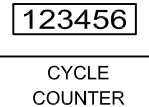
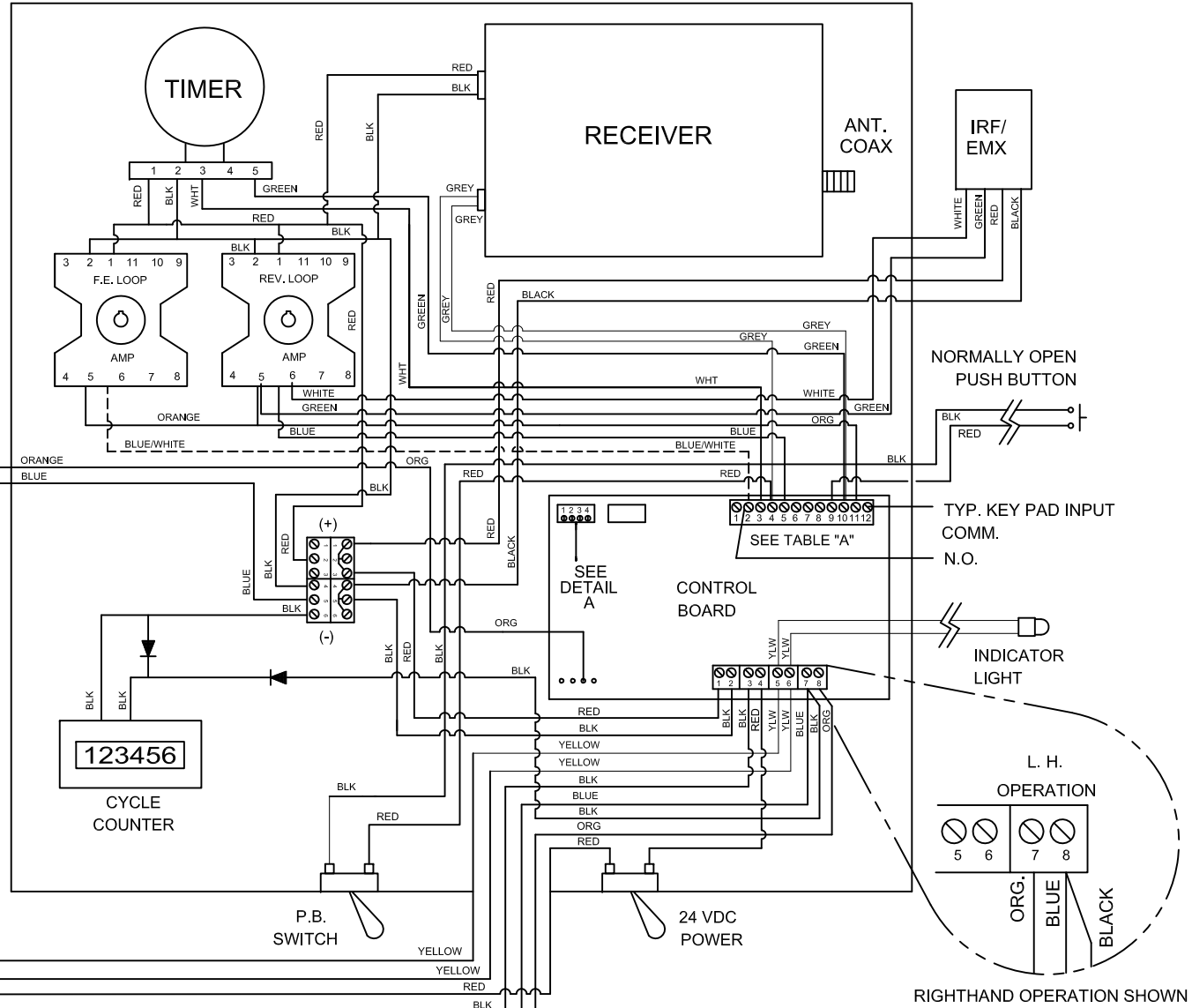
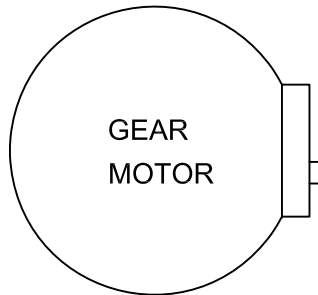


120V AC/10A
SERVICE USE ONLY!

TRANSFORMER



TO
BATTERIES



NOTICE
THE INFORMATION CONTAINED
ON THIS DOCUMENT IS
CONFIDENTIAL. ANY
DISSEMINATION, UNAPPROVED
DISCLOSURE OR COPYING OF
THIS INFORMATION IS
STRICTLY PROHIBITED.

UNLESS OTHERWISE SPECIFIED
DIMENSIONS ARE IN INCHES
ANGLES ± 1°
X/X ± .132, .XX ± .01, .XXX ± .005

Date: 09/02/05
Drn. By: MKS
Supersedes: 1/22/05
Dwg.: 113



Title: 24V DC Control Board Wiring Diagram

DO NOT SCALE

Rev. No.:	Revisions:	Date: