

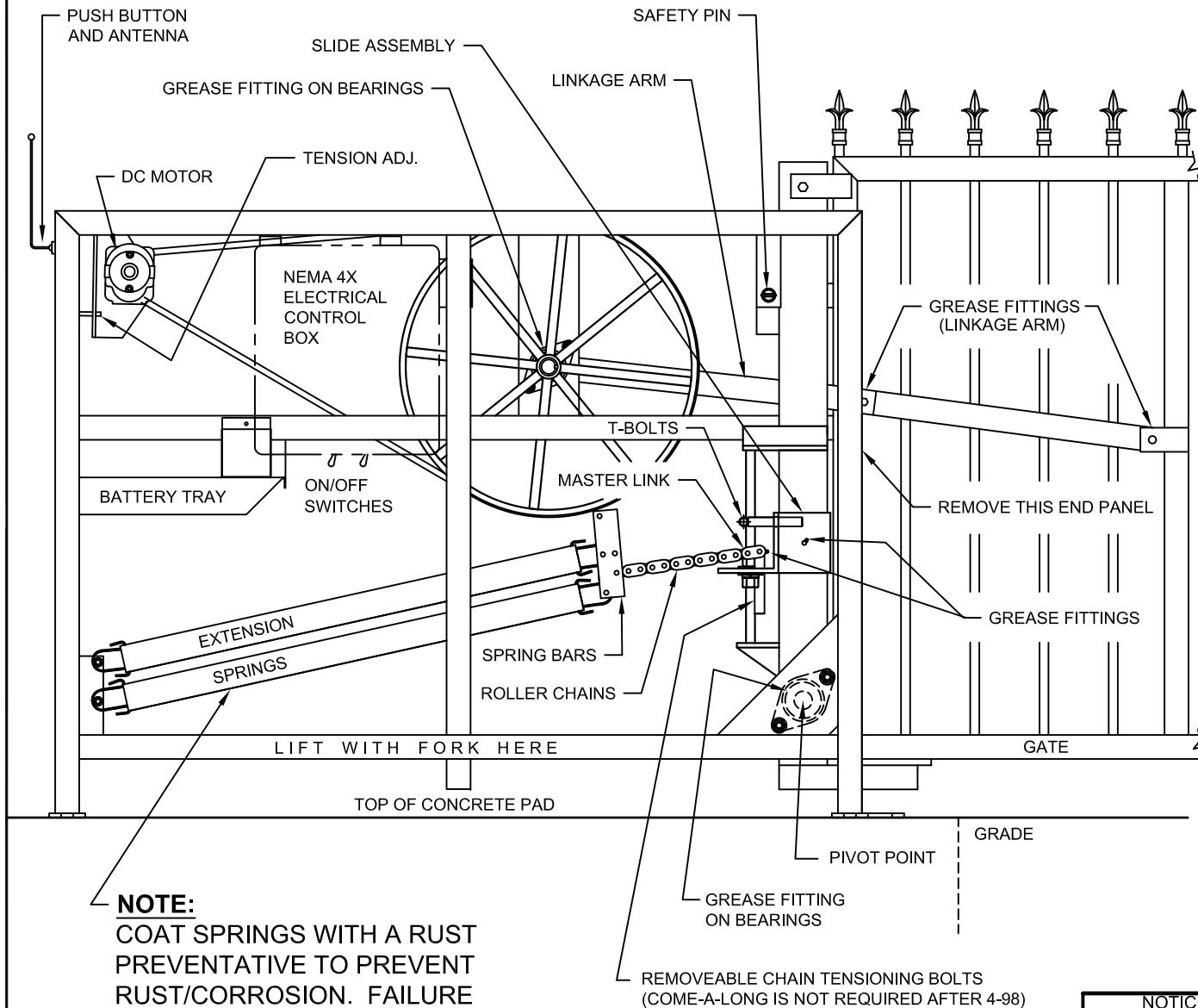
SPRING REPLACEMENT STEPS:

NEWER STYLE (4-98 To Present)

1. Place gate in the closed position.
2. Insert the Safety Pin and TURN POWER OFF!
3. Remove T-Bolts (if applicable)
4. Loosen top 3/4-10 lock nut (use 1 1/8" wrench) on slide assembly and thread it to within 5" of the top.
5. Raise the gate manually - **CAUTION!!** the Slide assembly will slam UP, **STAY CLEAR!!**
6. Loosen the bottom 7/8-9 chain tension nut (use 1 5/16" wrench) until springs are relaxed and remove if needed.
7. Remove the master link and/or bolts & replace the spring(s).
8. Secure chain lug back to original state and tighten it up.
9. Disconnect reversing devices (terminal #5) from control board.
10. **CAUTION!** Operate gate down (you will need to assist gate down and this may require TWO people on larger gates). **CAUTION!!** Slide assembly will SLAM DOWN!! **STAY CLEAR!!** Once down, push the Linkage Arm below Center to lock gate down and re-insert Safety pin while gate is in the closed position to prevent it from springing open.
11. Return 1 1/8" nut down to original location and remove Safety Pin.
12. Grease all of the fittings.
13. Adjust balance (see balance instructions, # 107).
14. Oil/coat springs to prevent corrosion.

OLDER STYLE (pre 4-98)

1. Remove the end panel.
2. Remove the T-Bolts.
3. Make up a 12" cable assembly with two loops: (1) -1" & (1) -2". Secure 1" loop to the roller chain near the spring bars. Hook the come-along to the 2" loop, then secure the come-along to a stable object keeping the cable in line with the springs.
4. Take up tension enough to relax roller chain, remove master link.
5. Back off come-along to release tension on springs. Replace spring(s)
6. Clean chain and lug holes and grease before reassembly with a new master link.
7. Grease all the grease points (zerk fittings).
8. Rebalance gate (see balance instructions # 107).



NOTE:
COAT SPRINGS WITH A RUST PREVENTATIVE TO PREVENT RUST/CORROSION. FAILURE TO COAT THE SPRINGS WILL VOID THE SPRING WARRANTY.

Rev.:	Revisions:	Date:
A	Added Step #14 and Note: Coat springs with rust preventative.	04/07/09 MS

NOTICE	
THE INFORMATION CONTAINED ON THIS DOCUMENT IS CONFIDENTIAL. ANY DISSEMINATION, UNAPPROVED DISCLOSURE OR COPYING OF THIS INFORMATION IS STRICTLY PROHIBITED.	
UNLESS OTHERWISE SPECIFIED DIMENSIONS ARE IN INCHES ANGLES ± 1°	
X/X ± 1/32, .XX ± .01, .XXX ± .005	

Date:	03/07/06
Drn. By:	MKS
Superceded:	8/10/04
Dwg.:	117
Title:	Spring Replacement Instructions

