

DISTRIBUTED BY:



# SOL-GATE

## Barrier Light

### Solar Flashing Warning Lights

#### SOLAR POWERED

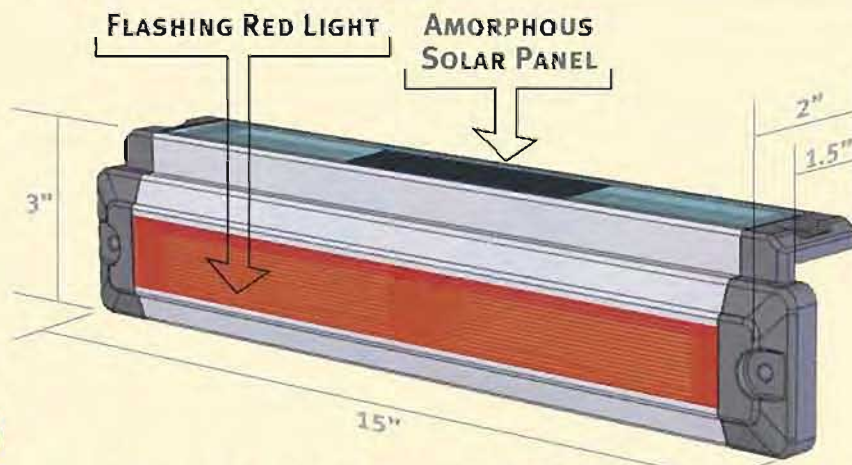
#### FLASHING WARNING

#### LIGHTS DESIGNED

#### FOR ALL TYPES

#### OF GATES, BARRIERS

#### AND FENCING

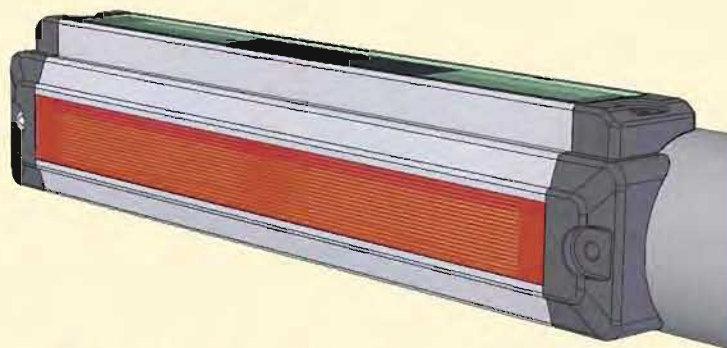


**RIGHT ANGLE INSTALLATION**  
MODEL #GS-61A

RIGHT ANGLE INSTALL

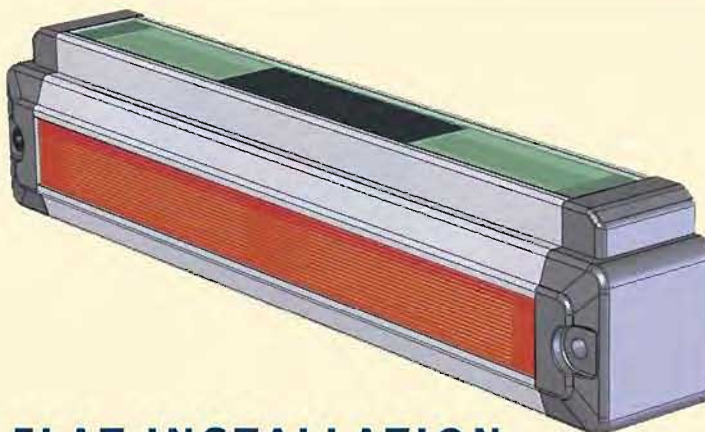
#### SPECIFICATIONS

- Bulb Type: LED
- No. of LED's: 2 Same Color LED's
- LED's Colors: Red
- Duration: 200 Hours Continuously After Fully Charged
- Battery: 2 x Ni-Mh 1.2 Volt AAA Rechargeable Batteries
- Function: Flashing Light
- Weight: 15 Oz
- Housing Material: Poly Carbonate, Rubber Sealing End Caps, UV Inhibitor
- Features: Auto On/Off Sensor, Light Timing Sensor
- Solar Panel: Amorphous
- Current Red LED: 25 mA, 100 Millisecond Flashing Per Second, Average Continuous 3 mA



**ROUND POLE INSTALLATION**  
MODEL #GS-61R

ROUND POLE INSTALL



**FLAT INSTALLATION**  
MODEL #GS-61S

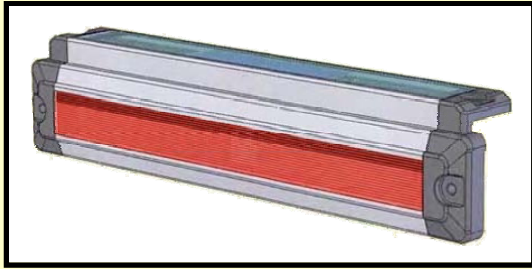
FLAT INSTALL

US PATENT  
# 7258461

US PATENT  
# 7478919

**AutoGate, Inc.**  
7306 Driver Road  
Berlin Hts., OH 44814  
800.944.4283  
[www.AutoGate.com](http://www.AutoGate.com)  
[Sales@AutoGate.com](mailto:Sales@AutoGate.com)

# SOL-GATE ® Solar Warning Flashing Light



## Product Features:

- This is a green product with renewable energy.
- The product can be mounted on a flat surface (GS-61S), a round surface (GS-61R), or on a right angle (GS-61A).
- The product is simple to install as it only requires screws and no wiring is involved.
- The flashing red lights uses considerably less energy than a solid light, therefore the charge lasts longer than standard solar lights.
- The housing unit is made of polycarbonate with a UV inhibitor. Polycarbonate is the strongest plastic on the market and is used in the safety boards in hockey rinks as well as safety glasses.
- The product has been tested under extreme weather conditions. The lab report is available upon request.
- Once the light is switched on, there is no need to ever touch the switch again.
- The batteries have an expected life cycle of 3-5 years and are rechargeable.
- There is a two year limited warranty on the housing unit and electronics.
- The GS-61A is a United States patented product.

## Product Functionality:

- When fully charged the light will flash for 200 consecutive hours without daytime recharge from sunlight.
- When it gets dark at night, a sensor turns on the red flashing light and it will flash red the entire night. During the day, the solar panel charges the batteries.
- The units charge on cloudy days and in partially shaded areas as it contains an amorphous solar panel. The unit recharges on 1-2 hours of light.
- The product will not shut off from car lights at night as the sensor is underneath the unit and out of range.

## Recommended Use:

- The product has been designed for all types of gates, other barriers, and for installation on fences.

## Product Specifications:

Bulbs:	Two red LED's
Duration:	200 consecutive hours after full charge
Battery:	2 X Ni-Mh 1.2 Volt AAA rechargeable
Function :	Flashing light
Weight :	15 ounces
Housing :	Polycarbonate, rubber sealing end caps, UV inhibitor
Solar Panel:	5 ½" amorphous
Red LED:	25 mA. 100 millisecond flashing per second, average continuous 3 mA
Warranty:	2 year limited warranty on housing and electronics