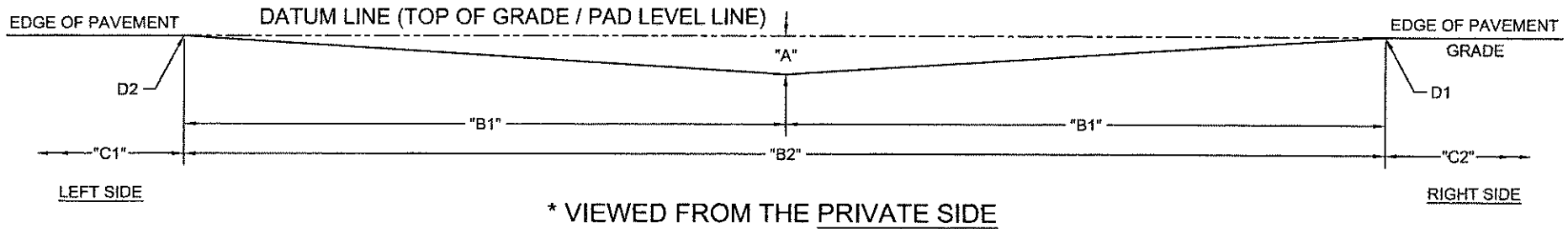


#120-NC DOUBLE CONTOUR ROAD PROFILE - NO CURBS

DIMENSION	DESCRIPTION	MEASUREMENT
"A"	DATUM TO ROAD SURFACE	
"B1"	DISTANCE FROM EDGE OF PAVEMENT TO LOW SPOT (APPLICABLE SIDE) (REF. TO "A")	
"B2"	DISTANCE FROM EDGE OF PAVEMENT TO EDGE OF PAVEMENT	
"C1"	AVAILABLE SPACE TO THE LEFT (NOTE ALL OBSTRUCTIONS, BUILDINGS, ETC.)	
"C2"	AVAILABLE SPACE TO THE RIGHT (NOTE ALL OBSTRUCTIONS, BUILDINGS, ETC.)	
"D1 to D2"	RECORD ANY ELEVATION CHANGE \pm FROM ONE SIDE OF THE ROAD TO THE OTHER (IF APPLICABLE)	



NOTES:

- 1.) IF THE ROAD SURFACE HAS MULTIPLE SLOPES OR A UNIQUE PROFILE, PLEASE PROVIDE AUTOGATE WITH A DIMENSIONED SKETCH OR DRAWING.
- 2.) OPERATOR MAY BE PLACED ON THE LEFT OR RIGHT SIDE OF THE ROAD.
- 3.) WHEN THERE ARE CURBS, PLEASE PROVIDE AUTOGATE WITH A DIMENSIONED SKETCH OR DRAWING - USE DRAWING NUMBER 120-C.

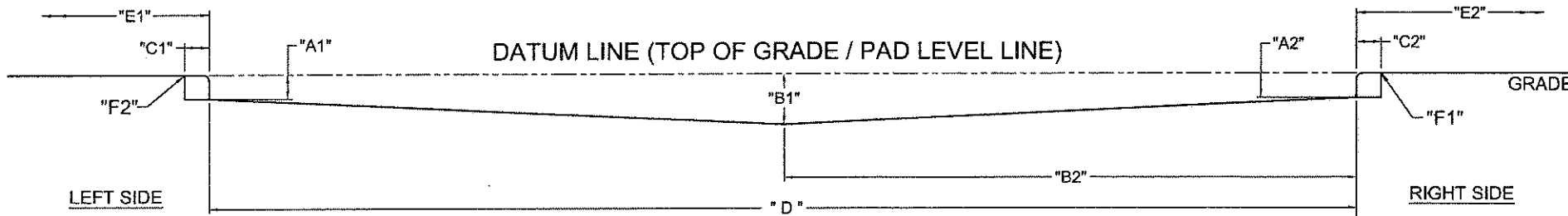
COMPLETE AND FAX BACK TO AUTOGATE: (419) 588-3514

Rev.:	Description:	Date:	Drn. By:	Chk. By:	NOTICE	Date:	Dr. By:	Ckd. By:	Dwg.:	Title:
					THE INFORMATION CONTAINED ON THIS DOCUMENT IS CONFIDENTIAL. ANY DISSEMINATION, UNAPPROVED DISCLOSURE OR COPYING OF THIS INFORMATION IS STRICTLY PROHIBITED.	08/06/05	MKS		120-NC	DOUBLE CONTOUR, ROAD PROFILE - NO CURBS
A	ADDED "D1 AND D2" & FILENAME CHANGED TO 120-NC	06/23/14	MKS	DMR		UNLESS OTHERWISE SPECIFIED DIMENSIONS ARE IN INCHES ANGLES \pm 1° XIX \pm 1/32, XX \pm .01, XXX \pm .005				



#120-C DOUBLE CONTOUR, ROAD PROFILE - CURBS

DIMENSION	DESCRIPTION	MEASUREMENT
"A1"	CURB HEIGHT - LEFT SIDE (IF APPLICABLE...)	
"A2"	CURB HEIGHT - RIGHT SIDE (IF APPLICABLE...)	
"B1"	DATUM TO ROAD SURFACE AT THE LOWEST SPOT IN THE ROAD	
"B2"	DISTANCE FROM CURB TO LOWEST SPOT IN THE ROAD (REFERENCE TO "B1")	
"C1"	LEFT SIDE CURB DEPTH	
"C2"	RIGHT SIDE CURB DEPTH	
"D"	DISTANCE BETWEEN CURBS or INSIDE FACE TO INSIDE FACE	
"E1"	AVAILABLE SPACE TO THE LEFT (NOTE ALL OBSTRUCTIONS, BUILDINGS, POWER LINES, ETC.)	
"E2"	AVAILABLE SPACE TO THE RIGHT (NOTE ALL OBSTRUCTIONS, BUILDINGS, POWER LINES, ETC.)	
"F1 to F2"	RECORD ANY ELEVATION CHANGE +/- BETWEEN THE TWO CURBS (USE TOP OF GRADE IF NO CURB/S)	



* VIEWED FROM THE PRIVATE SIDE

NOTES:

- 1.) IF THE CURBS REQUIRE MORE DESCRIPTION THAN HEIGHT AND DEPTH, PLEASE PROVIDE AUTOGATE WITH A DIMENSIONED SKETCH OR DRAWING.
- 2.) IF THE ROAD SURFACE HAS MULTIPLE SLOPES OR A UNIQUE PROFILE, PLEASE PROVIDE AUTOGATE WITH A DIMENSIONED SKETCH OR DRAWING.
- 3.) OPERATOR MAY BE PLACED ON THE LEFT OR RIGHT SIDE OF THE ROAD.
- 4.) WHEN THERE ARE NO CURBS, USE THE TOP OF GRADE TO MEASURE THE CONTOUR ACROSS THE DRIVE OR USE DRAWING NUMBER 120-NC.

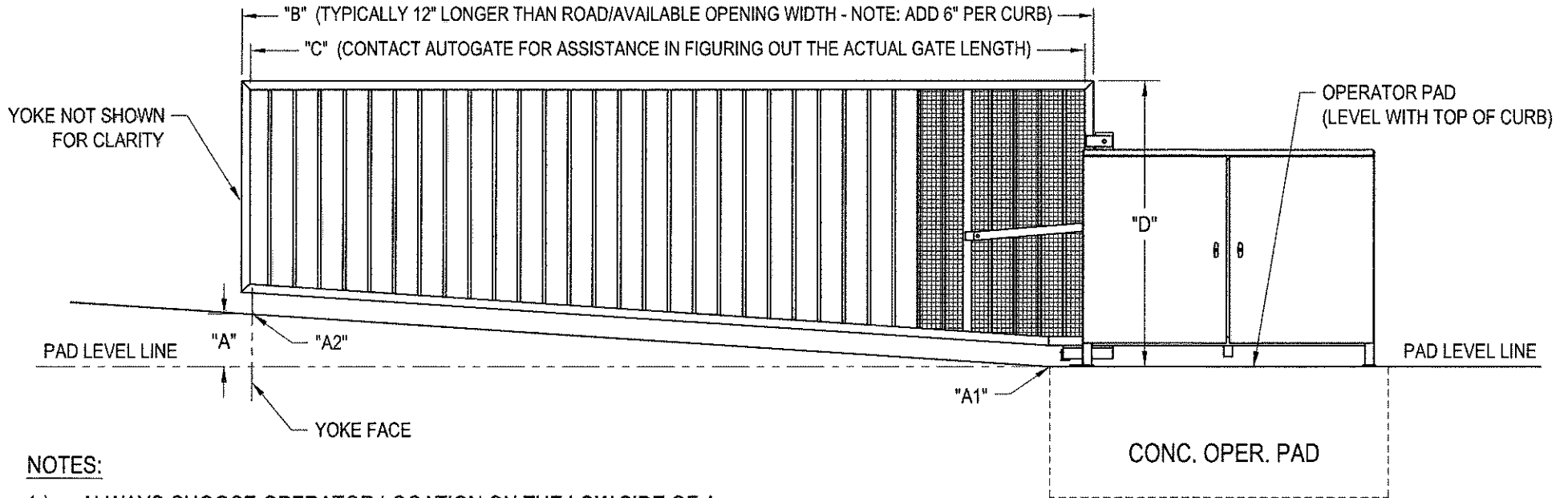
COMPLETE AND FAX BACK TO AUTOGATE: (419) 588-3514

Rev.:	Description:	Date:	Dwn. By:	Ckd. By:	NOTICE	Date:
					THE INFORMATION CONTAINED ON THIS DOCUMENT IS CONFIDENTIAL. ANY DISSEMINATION UNAPPROVED DISCLOSURE OR COPYING OF THIS INFORMATION IS STRICTLY PROHIBITED.	08/06/05
						Dr. By: MKS
					UNLESS OTHERWISE SPECIFIED DIMENSIONS ARE IN INCHES ANGLES ± 1° XX ± 1/32, .XX ± .01, .XXX ± .005	Ckd. By: .
						Dwg.: 120-C
A	ADDED "F1" AND "F2" & FILENAME CHANGED TO 120-C	06/23/14	MKS	DMR		Title: DOUBLE CONTOUR, ROAD PROFILE - CURBS



#121-R SLOPE UP CONTOUR - ROAD PROFILE (RIGHTHAND)

DIMENSION	DESCRIPTION	MEASUREMENT
"A"	ELEVATION CHANGE BETWEEN "A1" PAD LEVEL AND "A2" THE ROAD WHERE THE GATE ENDS	
"B"	OVERALL GATE LENGTH (PLEASE CONTACT AUTOGATE FOR ASSISTANCE)	
"C"	GATE OPENING (NORMALLY THE FACE OF THE OPERATOR TO THE FACE OF THE YOKE)	
"D"	GATE HEIGHT (FROM THE TOP OF THE OPERATOR PAD TO THE TOP OF GATE OR FINEALS)	




NOTES:

- 1.) ALWAYS CHOOSE OPERATOR LOCATION ON THE LOW SIDE OF A SLOPPED DRIVE WHEN EVER POSSIBLE. (AS SHOWN IN THIS DWG.)
- 2.) IF THE CURBS REQUIRE MORE DESCRIPTION THAN HEIGHT AND DEPTH, PLEASE PROVIDE AUTOGATE WITH A DIMENSIONED SKETCH OR DRAWING.
- 3.) IF THE ROAD SURFACE HAS MULTIPLE SLOPES OR A UNIQUE PROFILE, PLEASE PROVIDE AUTOGATE WITH A DIMENSIONED SKETCH OR DRAWING.
- 4.) OPERATOR MAY BE PLACED ON THE LEFT OR RIGHT SIDE OF THE ROAD.
- 5.) WHEN THERE ARE CURBS ON ONE OR BOTH SIDES, REFER TO DWG. #120-C

* VIEWED FROM THE PRIVATE SIDE

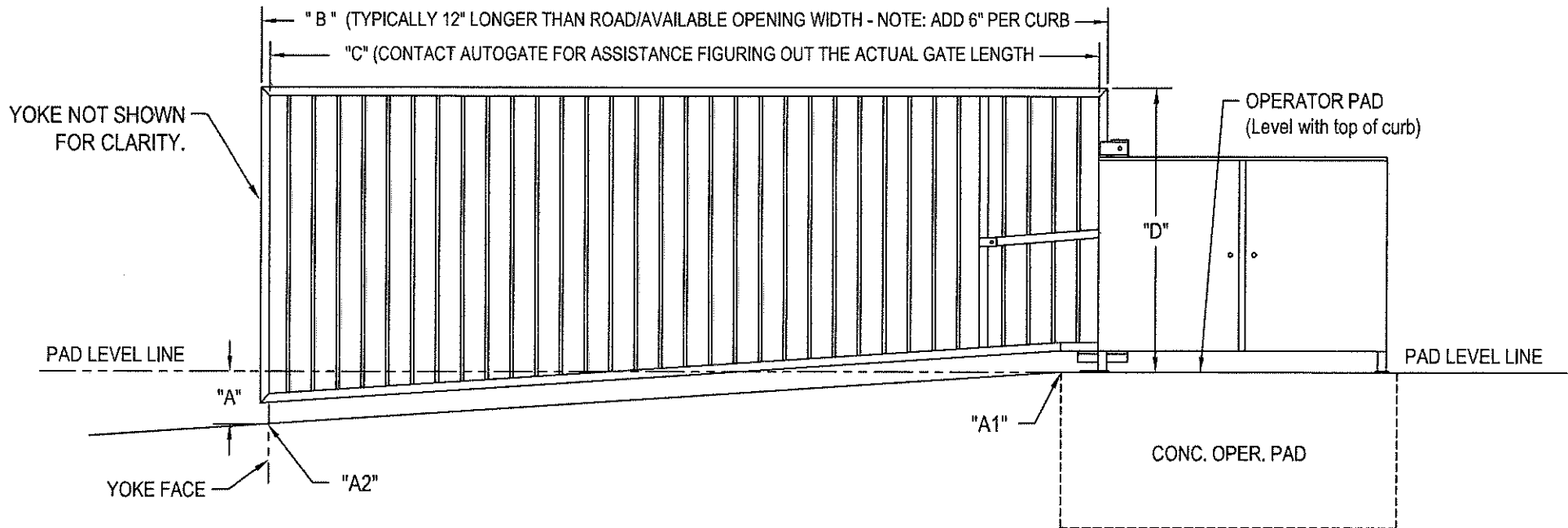
COMPLETE AND FAX BACK TO AUTOGATE: (419) 588-3514

Rev.:	Description:	Date:	Drn. By:	Ckd. By:	DO NOT SCALE	
A	REVISED "A" DESCRIPTION AND ADDED "A1" AND "A2"	05/07/14	DMR	MKS	UNLESS OTHERWISE SPECIFIED DIMENSIONS ARE IN INCHES ANGLES ± 1° XX ± .132, .XX ± .01, .XXX ± .005	

NOTICE		Date: 10/27/05	
THE INFORMATION CONTAINED ON THIS DOCUMENT IS CONFIDENTIAL. ANY DISSEMINATION, UNAPPROVED DISCLOSURE OR COPYING OF THIS INFORMATION IS STRICTLY PROHIBITED		Drn. By: MKS	
		Ckd. By: DMR	
		Dwg.: 121-R	
		Title: SLOPE UP CONTOUR - ROAD PROFILE (R/H)	

#122-R SLOPE DOWN CONTOUR - ROAD PROFILE (RIGHTHAND)

DIMENSION	DESCRIPTION	MEASUREMENT
"A"	ELEVATION CHANGE OF ROAD BETWEEN "A1", PAD LEVEL AND "A2" AT THE END OF THE GATE	
"B"	OVERALL GATE LENGTH (PLEASE CONTACT AUTOGATE FOR ASSISTANCE...)	
"C"	GATE OPENING (NORMALLY THE FACE OF THE OPERATOR TO THE FACE OF THE YOKE)	
"D"	GATE HEIGHT (FROM THE TOP OF THE OPERATOR PAD TO THE TOP OF GATE OR FINEALS)	



NOTES:

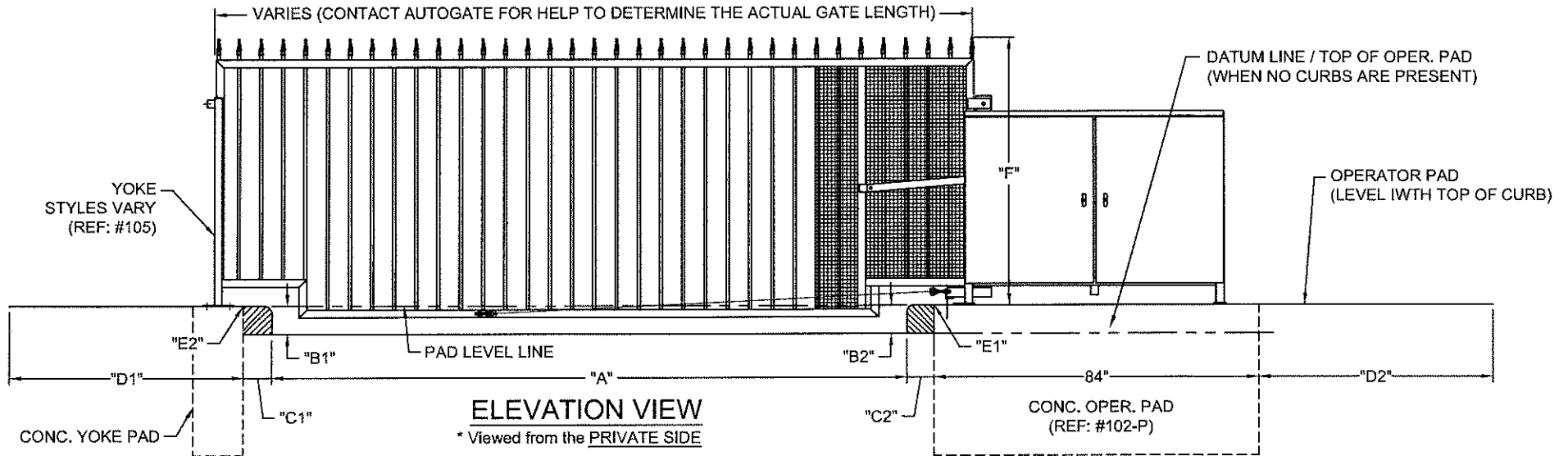
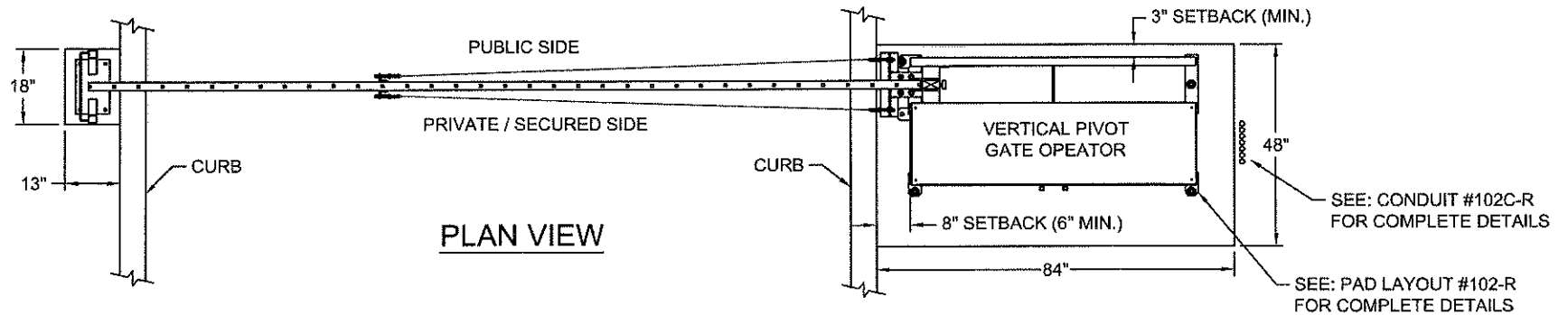
- 1.) ALWAYS CHOOSE OPERATOR LOCATION ON THE LOW SIDE OF A SLOPED DRIVE WHEN EVER POSSIBLE. (AS SHOWN IN DWG #121-R)
- 2.) IF THE CURBS REQUIRE MORE DESCRIPTION THAN HEIGHT AND DEPTH, PLEASE PROVIDE AUTOGATE WITH A DIMENSIONED SKETCH OR DRAWING.
- 3.) IF THE ROAD SURFACE HAS MULTIPLE SLOPES OR A UNIQUE PROFILE, PLEASE PROVIDE AUTOGATE WITH A DIMENSIONED SKETCH OR DRAWING.
- 4.) OPERATOR MAY BE PLACED ON THE LEFT OR RIGHT SIDE OF THE ROAD.
- 5.) WHEN THERE ARE CURBS ON ONE OR BOTH SIDES, REFER TO DWG #120-C

* VIEWED FROM THE PRIVATE SIDE

COMPLETE AND FAX BACK TO AUTOGATE: (419) 588-3514

DO NOT SCALE					NOTICE		Date: 10/27/05	AutoGate <small>Gate Entry Systems</small> Berlin Heights, Ohio Phn (419) 588-2796 Fax (419) 588-3514
Rev.:	Description:	Date:	Drn. By:	Ckd. By:	THE INFORMATION CONTAINED ON THIS DOCUMENT IS CONFIDENTIAL. ANY DISSEMINATION, UNAPPROVED DISCLOSURE OR COPYING OF THIS INFORMATION IS STRICTLY PROHIBITED.		Drn. By: MKS	
					UNLESS OTHERWISE SPECIFIED DIMENSIONS ARE IN INCHES ANGLES ± 1° XX ± 1/32, .XX ± .01, .XXX ± .005		Ckd. By: DMR	
A	REVISED "A" DESCRIPTION AND ADDED "A1" AND "A2"	05/07/14	DMR	MKS			Dwg.: 122-R	Title: SLOPE DOWN CONTOUR - ROAD PROFILE (R/H)

#151-R VPL GATE PROFILE - SITE SURVEY (RIGHTHAND)



DIM	DESCRIPTION	MEASUREMENT
"A"	DISTANCE BETWEEN CURBS (IF APPLICABLE...)	
"B1"	CURB HEIGHT - LEFT SIDE (IF APPLICABLE...)	
"B2"	CURB HEIGHT - RIGHT SIDE (IF DIFFERENT FROM THE LEFT...)	
"C1"	DEPTH OF LEFT CURB (IF APPLICABLE...)	
"C2"	DEPTH OF RIGHT CURB (IF DIFFERENT FROM THE LEFT...)	
"D1"	AVAILABLE SPACE LEFT SIDE (TO THE NEAREST OBSTACLE...)	
"D2"	AVAILABLE SPACE RIGHT SIDE (TO THE NEAREST OBSTACLE...)	
"E"	ELEVATION CHANGE +/- FROM "E1" CURB TO "E2" ROAD AT END OF GATE	
"F"	GATE HEIGHT FROM OPERATOR PAD	

NOTES:

1. IF CURB REQUIRES MORE DESCRIPTION THAN HEIGHT AND DEPTH, PLEASE PROVIDE A DIMENSIONED SKETCH OR DRAWING.
2. IF ROAD SURFACE HAS MULTIPLE SLOPES OR A UNIQUE PROFILE, PLEASE PROVIDE A DIMENSIONED SKETCH OR DRAWING. (REF: #120-C OR #120-NC)
3. MINIMUM CLEARANCE BETWEEN GATE AND CURB/ROAD IS 6".
4. OPERATOR MAY BE PLACED ON THE LEFT OR RIGHT SIDE OF THE ROAD.
5. YOKE PAD ADJACENT TO BACKSIDE OF CURB, SAME ELEVATION AS THE OPERATOR PAD.

COMPLETE AND FAX BACK TO AUTOGATE: (419) 588-3514

Rev.:	Description:	Date:	Drn. By:	Ckd. By:
B	REVISED "E" DESCRIPTION AND ADDED "E1" AND "E2" CALL OUTS	05/07/14	DMR	MKS
A	UPDATED DRAWING	02/27/13	SLD	KLL

NOTICE
 THE INFORMATION CONTAINED ON THIS DOCUMENT IS CONFIDENTIAL. ANY DISSEMINATION, UNAPPROVED DISCLOSURE OR COPYING OF THIS INFORMATION IS STRICTLY PROHIBITED.
 UNLESS OTHERWISE SPECIFIED DIMENSIONS ARE IN INCHES ANGLES ± 1°
 XIX ± .132, XX ± .01, XXX ± .005

Date: 08/17/05
 Drn. By: MKS
 Ckd. By: DMR



Dwg.: 151-R
 Title: VPL GATE Profile - Site Survey (Righthand)