

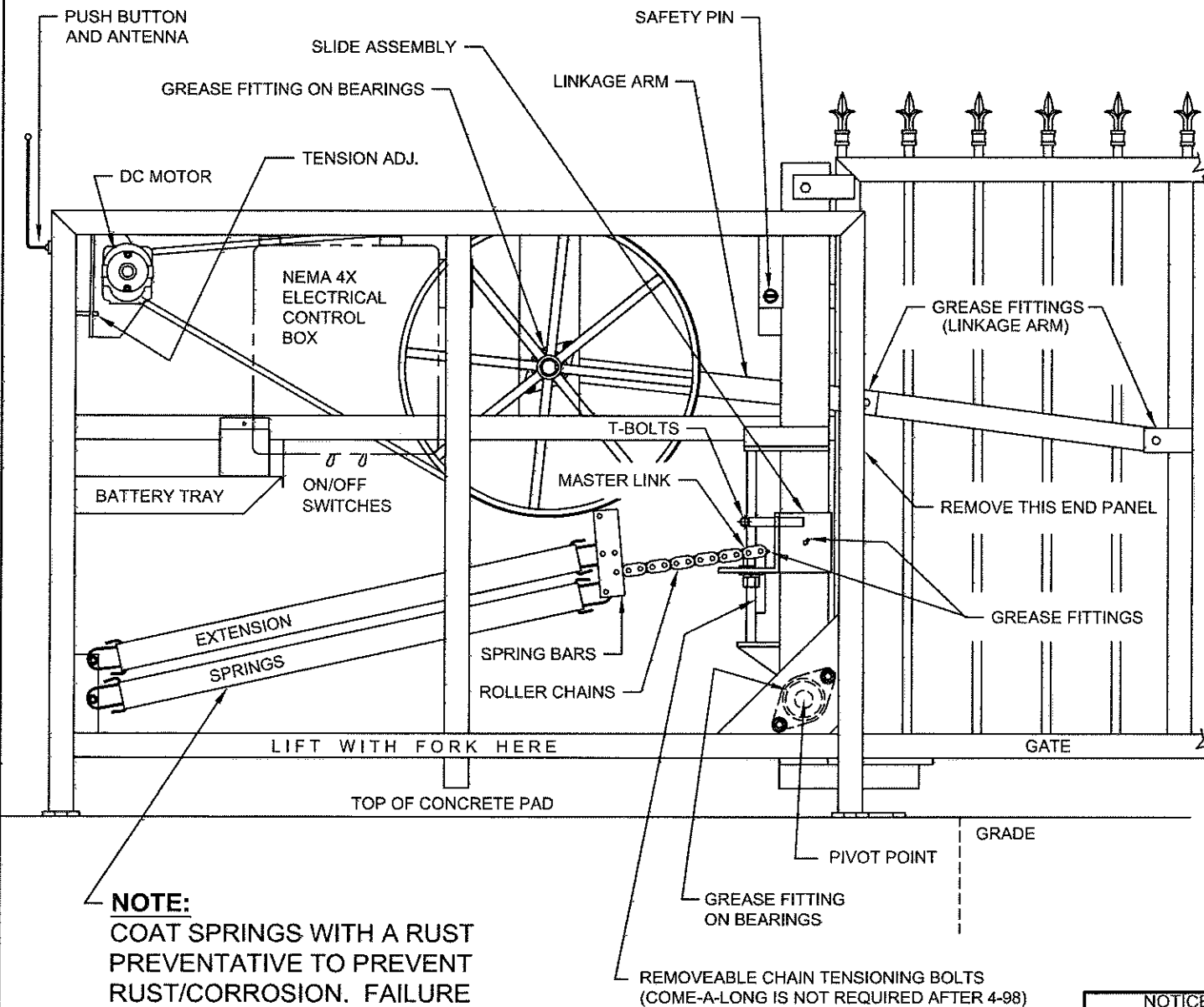
SPRING REPLACEMENT STEPS:

NEWER STYLE (4-98 To Present)

1. Place gate in the closed position.
2. Insert the Safety Pin and TURN POWER OFF!
3. Remove T-Bolts (if applicable)
4. Loosen top 3/4-10 lock nut (use 1 1/8" wrench) on slide assembly and thread it to within 5" of the top.
5. Raise the gate manually - **CAUTION!!** the Slide assembly will slam UP, **STAY CLEAR!!**
6. Loosen the bottom 7/8-9 chain tension nut (use 1 5/16" wrench) until springs are relaxed and remove if needed.
7. Remove the master link and/or bolts & replace the spring(s).
8. Secure chain lug back to original state and tighten it up.
9. Disconnect reversing devices (terminal #5) from control board.
10. **CAUTION!!** Operate gate down (you will need to assist gate down and this may require TWO people on larger gates). **CAUTION!!** Slide assembly will SLAM DOWN!! **STAY CLEAR!!** Once down, push the Linkage Arm below Center to lock gate down and re-insert Safety pin while gate is in the closed position to prevent it from springing open.
11. Return 1 1/8" nut down to original location and remove Safety Pin.
12. Grease all of the fittings.
13. Adjust balance (see balance instructions, # 107).
14. Oil/coat springs to prevent corrosion.

OLDER STYLE (pre 4-98)

1. Remove the end panel.
2. Remove the T-Bolts.
3. Make up a 12" cable assembly with two loops: (1) -1" & (1) -2". Secure 1" loop to the roller chain near the spring bars. Hook the come-along to the 2" loop, then secure the come-along to a stable object keeping the cable in line with the springs.
4. Take up tension enough to relax roller chain, remove master link.
5. Back off come-along to release tension on springs. Replace spring(s)
6. Clean chain and lug holes and grease before reassembly with a new master link.
7. Grease all the grease points (zerk fittings).
8. Rebalance gate (see balance instructions # 107).



NOTE:

COAT SPRINGS WITH A RUST PREVENTATIVE TO PREVENT RUST/CORROSION. FAILURE TO COAT THE SPRINGS WILL VOID THE SPRING WARRANTY.

NOTICE

THE INFORMATION CONTAINED ON THIS DOCUMENT IS CONFIDENTIAL. ANY DISSEMINATION, UNAPPROVED DISCLOSURE OR COPYING OF THIS INFORMATION IS STRICTLY PROHIBITED.

UNLESS OTHERWISE SPECIFIED DIMENSIONS ARE IN INCHES ANGLES ± 1°
XX ± 1/32, .XX ± .01, .XXX ± .005

Date: 03/07/06

Drn. By: MKS

Supercedes: 8/10/04

Dwg.: 117

Title: Spring Replacement Instructions



DO NOT SCALE				
Rev.:	Description:	Date:	Drn. By:	Ckd. By:
B	UPDATED DRAWING FORMAT	9/15/14	KAY	MKS
A	Added Step #14 and Note: Coat springs with rust preventative.	04/07/09 MS		