


H-0150  
1 1/4 in. Dia.

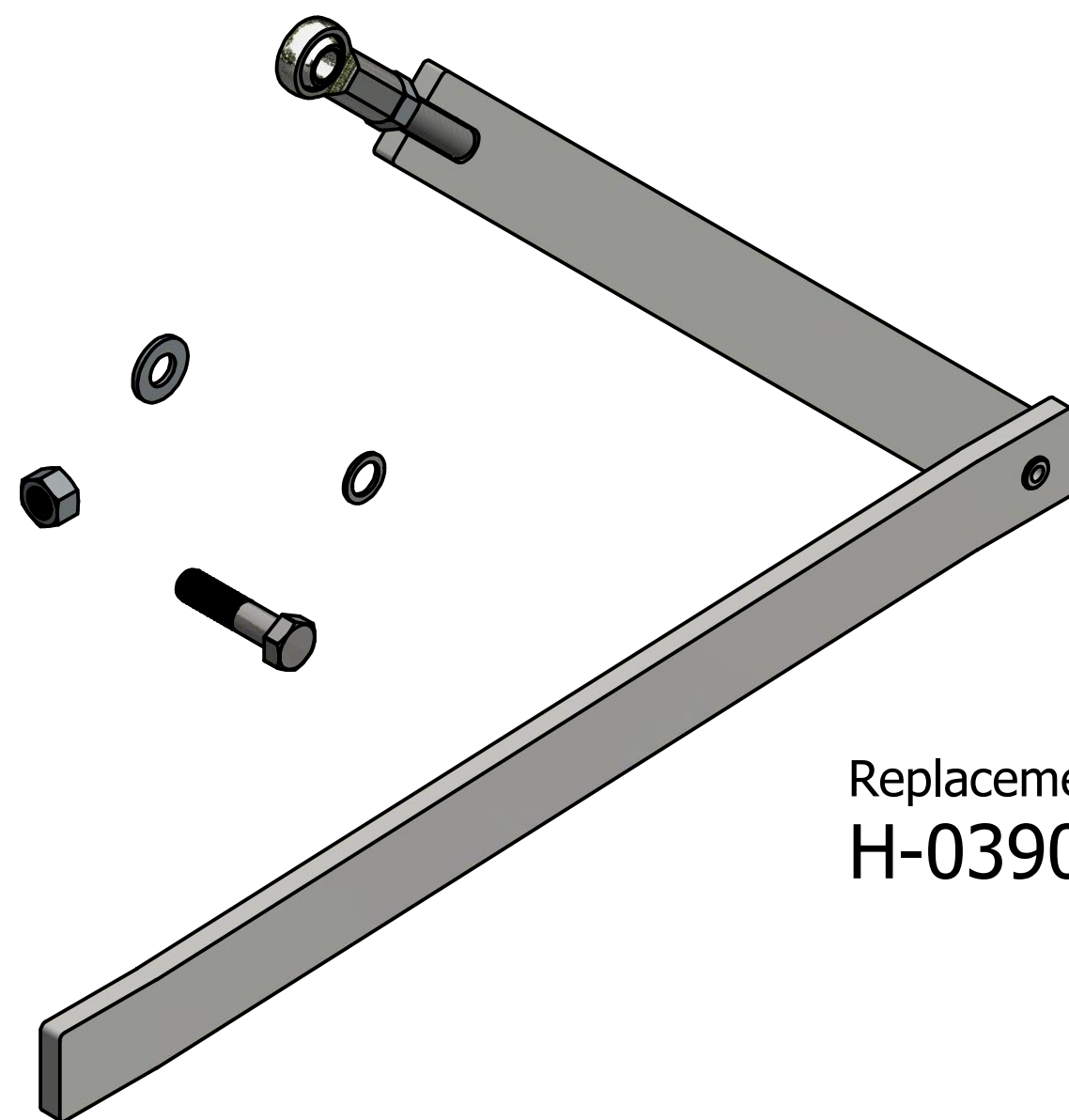
G-0193 (x2)

T-0590

H-0154  
1 1/2 in. Dia.

Current: M-0169 (24vdc)  
Pre-1999: M-0160 (12vdc)

<b>NOTICE</b> THE INFORMATION CONTAINED IN THIS DOCUMENT IS CONFIDENTIAL. ANY DISSEMINATION, UNAPPROVED DISCLOSURE, OR COPYING OF THIS INFORMATION IS STRICTLY PROHIBITED.	DATE: 5/14/2014	 <b>AutoGate</b> <i>Gate Entry Systems</i>  Berlin Heights, Ohio FAX (419) 588-3514
	DRAWN: odehyoe	
	CKD BY:	
	UNLESS OTHERWISE SPECIFIED DIMENSIONS ARE IN INCHES ANGLES ± 1° X/X ± 1/32, .XX ± .01, .XXX ± .005	DRAWING: Operator_Misc_Replacement_Parts
	TITLE:	
FILE: E:\3D Inventor\OPERATOR\Drawings\Operator_Misc_Replacement_Parts.dwg		

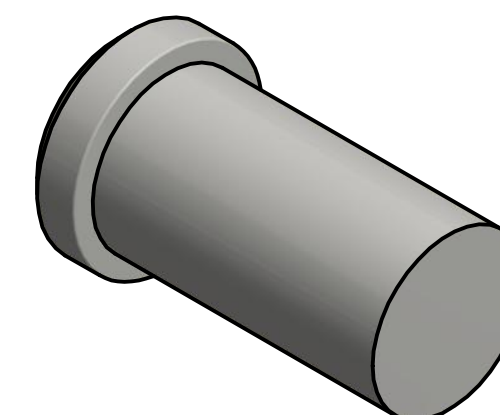


Replacement Linkage Arm Kit  
H-0390

Linkage Arm Rod End Bearing  
H-0153




Replacement 3/4 in. Elbow Clevis Pin  
(Operators From Between July 2001 and August 2009)  
G-0164-Part



Linkage Arm Elbow Bearing  
(For Current Pivot Design)  
H-0152




<div>NOTICE</div> <div>THE INFORMATION CONTAINED IN THIS DOCUMENT IS CONFIDENTIAL. ANY DISSEMINATION, UNAPPROVED DISCLOSURE, OR COPYING OF THIS INFORMATION IS STRICTLY PROHIBITED.</div> <div>UNLESS OTHERWISE SPECIFIED DIMENSIONS ARE IN INCHES ANGLES ± 1° X/X ± 1/32, .XX ± .01, .XXX ± .005</div>	DATE: 5/15/2014	<div><div><b>AutoGate</b> Gate Entry Systems  Berlin Heights, Ohio FAX (419) 588-3514</div></div>
	DRAWN: odayoe	
	CKD BY:	
	DRAWING: Operator_Linkage_Arm_Replacement	A
FILE: E:\3D Inventor\OPERATOR\Drawings\Operator Linkage Arm Replacement Drawing.dwg	Draw	

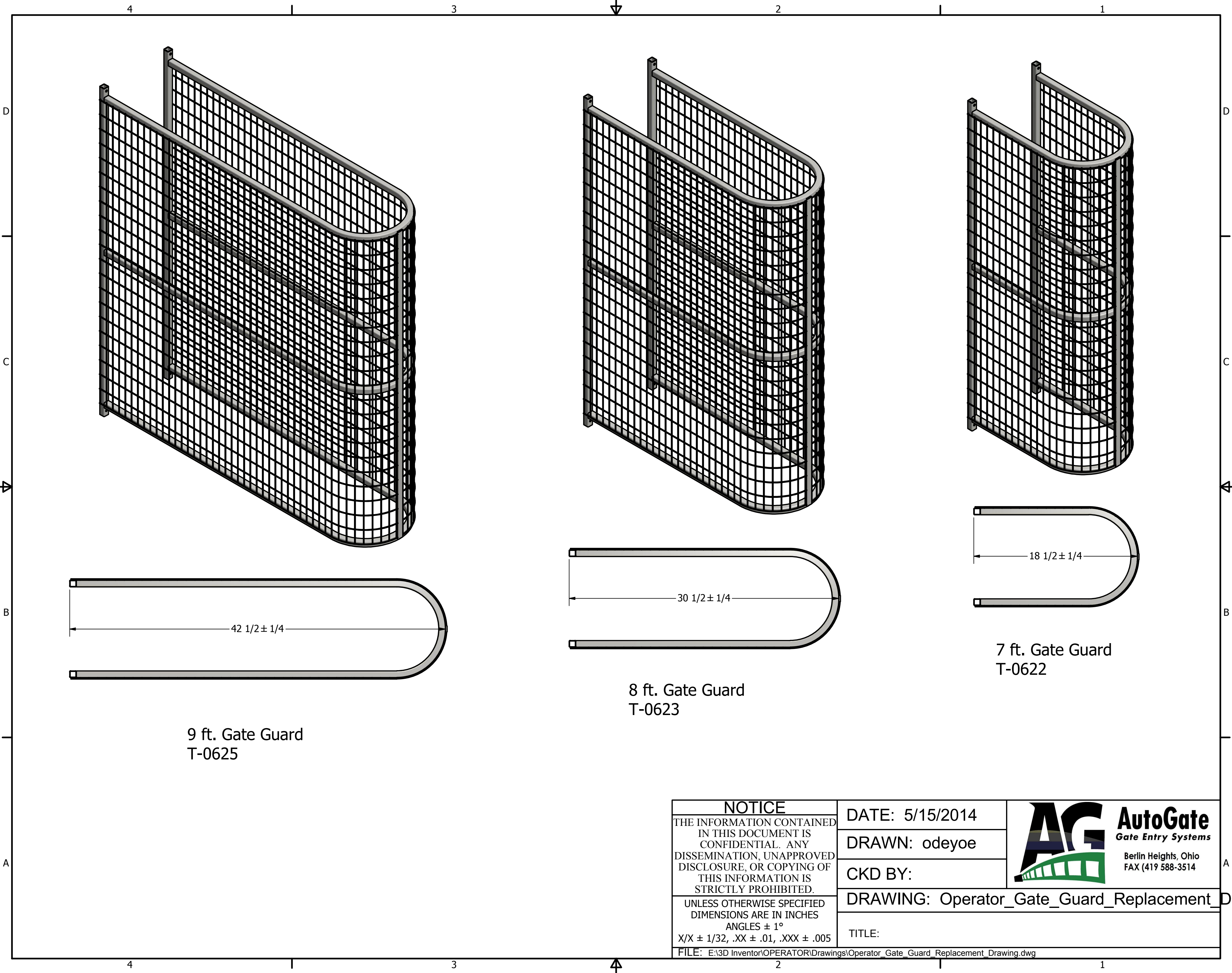
Old Style Door Locks  
(Non 3-Point Locks)  
Are No Longer Available  
From AutoGate

3-Point Door Latch  
Lefthand Orientation  
Clockwise to Latch

3-Point Door Latch  
Righthand Orientation  
Counter-Clockwise to Latch

Lock Keys (2 per Set) - F-0055


<div>NOTICE</div> <div>THE INFORMATION CONTAINED IN THIS DOCUMENT IS CONFIDENTIAL. ANY DISSEMINATION, UNAPPROVED DISCLOSURE, OR COPYING OF THIS INFORMATION IS STRICTLY PROHIBITED.</div>	DATE: 5/14/2014	<div></div> <div><b>AutoGate</b> <i>Gate Entry Systems</i>  Berlin Heights, Ohio FAX (419) 588-3514</div>
	DRAWN: odayoe	
	CKD BY:	
	DRAWING: Operator_Door_Latch_Replacement_P	
<div>UNLESS OTHERWISE SPECIFIED DIMENSIONS ARE IN INCHES ANGLES ± 1° X/X ± 1/32, .XX ± .01, .XXX ± .005</div>	TITLE:	
FILE: E:\3D Inventor\OPERATOR\Drawings\Operator_Door_Latch_Replacement_Parts.dwg		



9 ft. Gate Guard  
T-0625

8 ft. Gate Guard  
T-0623

7 ft. Gate Guard  
T-0622

<b>NOTICE</b> THE INFORMATION CONTAINED IN THIS DOCUMENT IS CONFIDENTIAL. ANY DISSEMINATION, UNAPPROVED DISCLOSURE, OR COPYING OF THIS INFORMATION IS STRICTLY PROHIBITED.	DATE: 5/15/2014	 <b>AutoGate</b> <i>Gate Entry Systems</i> Berlin Heights, Ohio FAX (419) 588-3514
	DRAWN: odayoe	
	CKD BY:	
	DRAWING: Operator_Gate_Guard_Replacement_Drawing	
UNLESS OTHERWISE SPECIFIED DIMENSIONS ARE IN INCHES ANGLES ± 1° X/X ± 1/32, .XX ± .01, .XXX ± .005	TITLE:	
FILE: E:\3D Inventor\OPERATOR\Drawings\Operator_Gate_Guard_Replacement_Drawing.dwg		