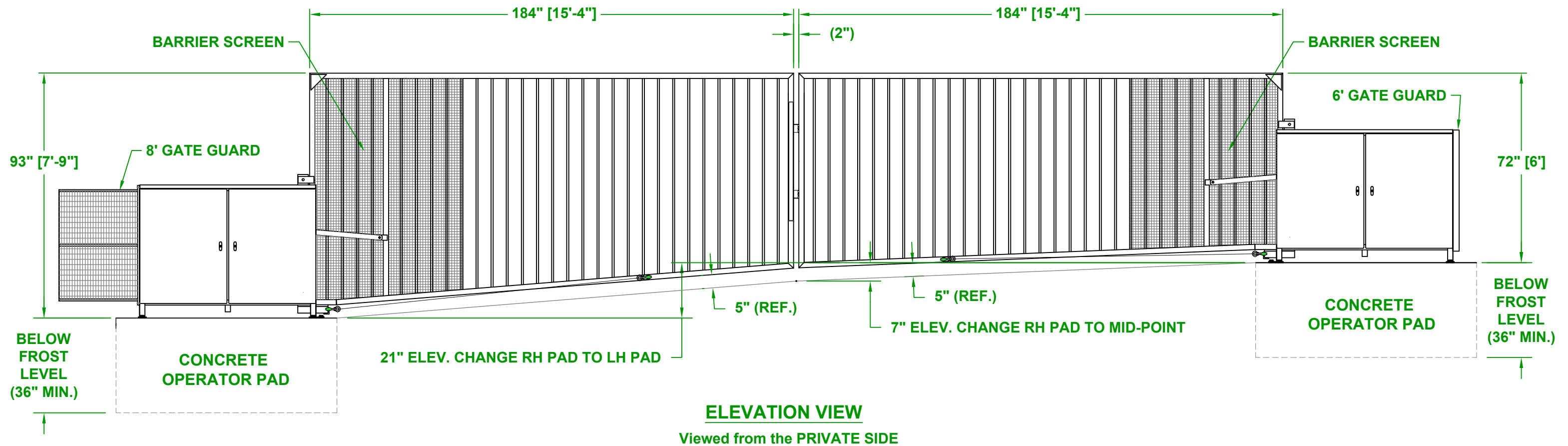


MATERIAL : STEEL
COLOR : BLACK

MATERIAL : STEEL
COLOR : BLACK



NOTICE
THE INFORMATION CONTAINED ON THIS DOCUMENT IS CONFIDENTIAL. ANY DISSEMINATION, UNAPPROVED DISCLOSURE OR COPYING OF THIS INFORMATION IS STRICTLY PROHIBITED

Date: 09/01/15
Dr. By: KAY
Ckd. By: DMR

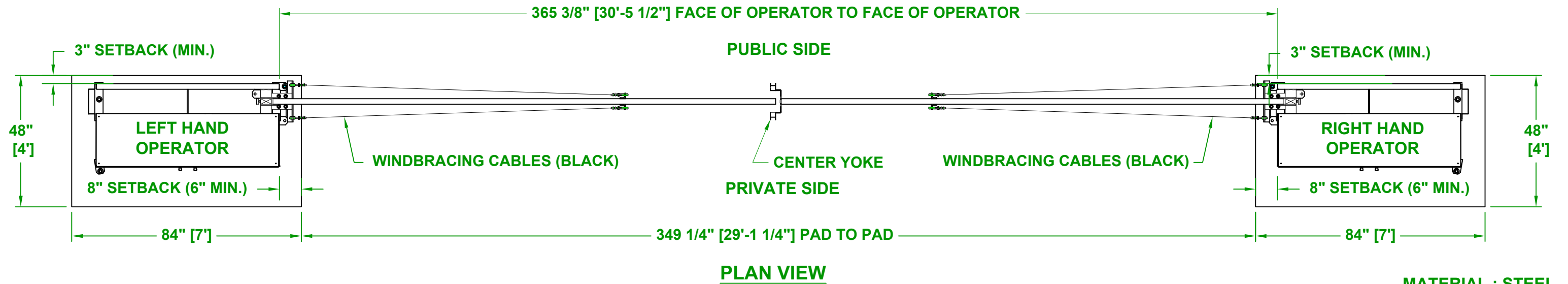


UNLESS OTHERWISE SPECIFIED DIMENSIONS ARE IN INCHES ANGLES ± 1° X/X ± 1/32, .XX ± .01, .XXX ± .005

Dwg.: AG#
Title: **Buckeye "500" VPG (15'-4" x 6')**

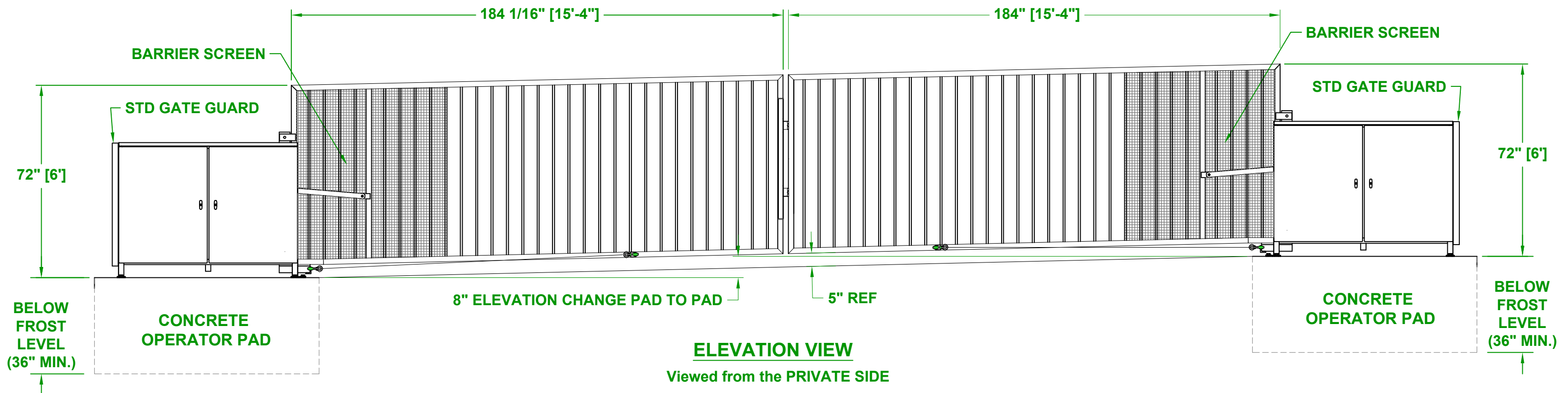
Rev.:	Description:	Date:	Drn. By:	Ckd. By:
A	CUSTOMER REQUESTED CHANGE TO CONTOUR	10/2/15	KAY	DMR

DO NOT SCALE



MATERIAL : STEEL
COLOR : BLACK

MATERIAL : STEEL
COLOR : BLACK



CUSTOMER PROVIDED AUTOGATE WITH A SITE DRAWING OR SKETCH (YES NO)

CUSTOMER SIGNATURE: _____

DATE SIGNED: _____

Rev.:	Description:	Date:	Drn. By:	Ckd. By:
B	CUSTOMER REQUESTED RACK CHANGE FROM 12" DROP TO 8"	10/2/15	KAY	DMR
A	REVERSED RACK DIRECTION	9/4/15	KAY	DMR

NOTICE
THE INFORMATION CONTAINED ON THIS DOCUMENT IS CONFIDENTIAL. ANY DISSEMINATION, UNAPPROVED DISCLOSURE OR COPYING OF THIS INFORMATION IS STRICTLY PROHIBITED

Date: 09/01/15
Dr. By: KAY
Ckd. By: DMR
Dwg.: AG#



UNLESS OTHERWISE SPECIFIED DIMENSIONS ARE IN INCHES ANGLES ± 1° X/X ± 1/32, .XX ± .01, .XXX ± .005

Title: **Buckeye "500" VPG (15'-4" x 6')**