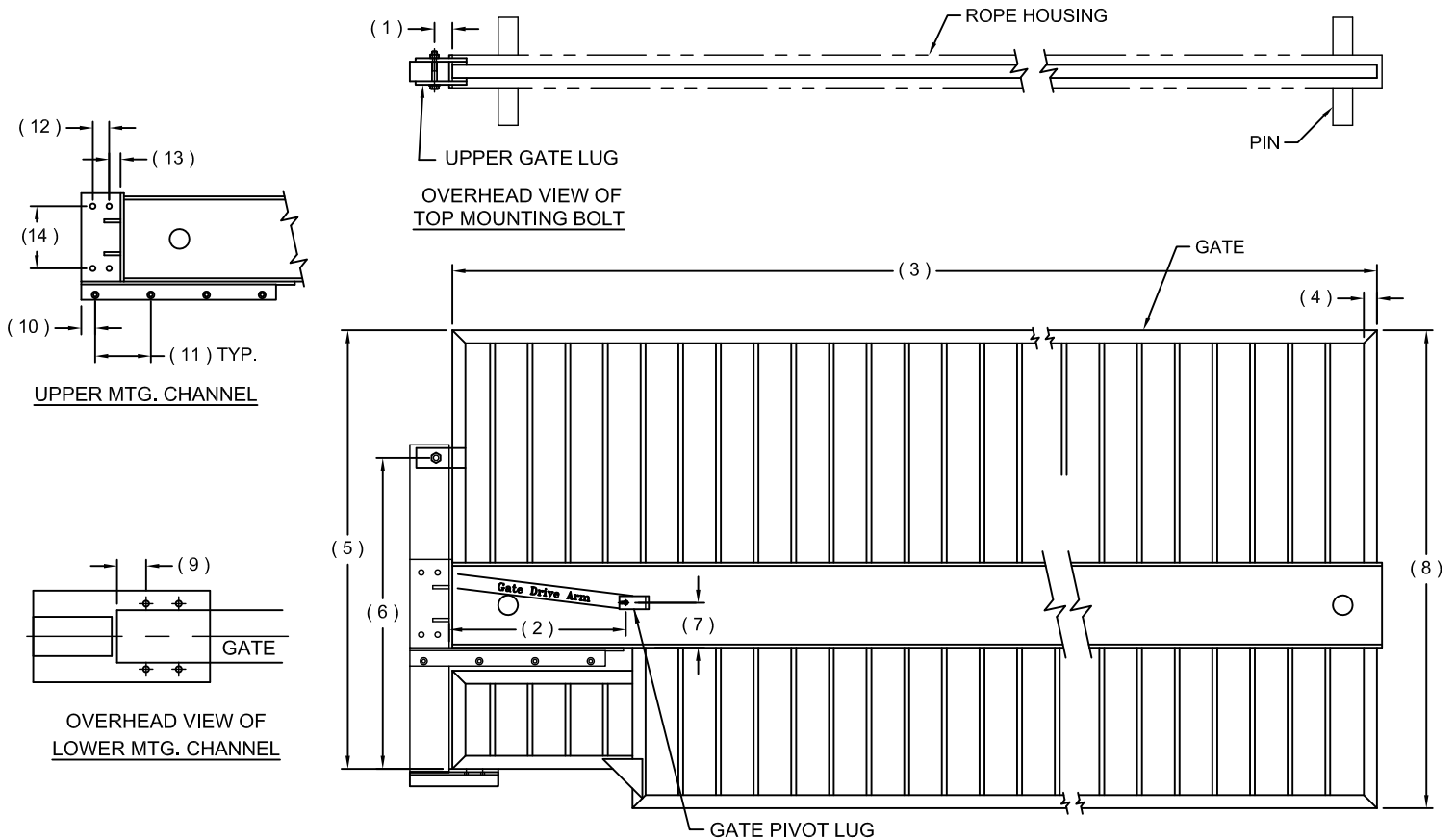


Explanations of each of the Replacement Gate Dimensions Required	Dimensions
1) CENTER of top mounting bolt hole to the BACK END of the gate.	1)
2) BACK END of the gate to the CENTER of the lifting lug bolt.	2)
3) OAL (Over All Length) of gate, from OUTSIDE to OUTSIDE of tubing.	3)
4) Tubing size (normally 2" square).	4)
5) Over all HEIGHT of gate frame, nearest to operator arm	5)
6) CENTER of top mounting bolt hole to the BOTTOM of the gate frame.	6)
7) CENTER of lifting lug hole to BOTTOM of gate frame.	7)
8) Over all height of the gate frame, end of the gate.	8)
9) BACK END of the gate to the CENTER of the FIRST mounting hole on the BOTTOM plate.	9)
10) Private side rear mounting bolt CENTER to the EDGE of the gate tubing.	10)
11) Private side mounting bolt CENTER to the EDGE of the windbrace angle (N/A on some gates)	11)
12) Bottom gate mounting plate: _____ 2-Bolt (older) or _____ 4-Bolt (newer).	12)
13) Face of the windbrace angle to the INSIDE of face of the windbrace mounting lug.	13)
14) BACK edge of the gate to the INSIDE face of the windbrace mounting lug.	14)
15) Customer: _____	16) Date: _____
17) Gate Site: _____	18) AG#: _____



( 15 ) Customer: \_\_\_\_\_  
 ( 17 ) Gate Site: \_\_\_\_\_

( 16 ) Date: \_\_\_\_\_  
 ( 18 ) AG#: \_\_\_\_\_

**NOTES:**

- 1) Fill in ALL dimensions and customer information above (1 thru 18) referencing explanations on the back.
- 2) Indicate any contour/s or curb notch/s ( if applicable) and include additional drawing or sketch if needed.
- 3) Please call our Service Department with any questions you may have at: (800) 944-4283

Date Drn.: 02/23/07	<b>AG</b> AutoGate Gate Entry Systems
Drn. By: MKS	
Ckd. By: DMR	
Berlin Heights, Ohio FAX (419) 588-3514	
Dwg.: 116 - CG	
Title: Crash Gate Replacement Dimensions	