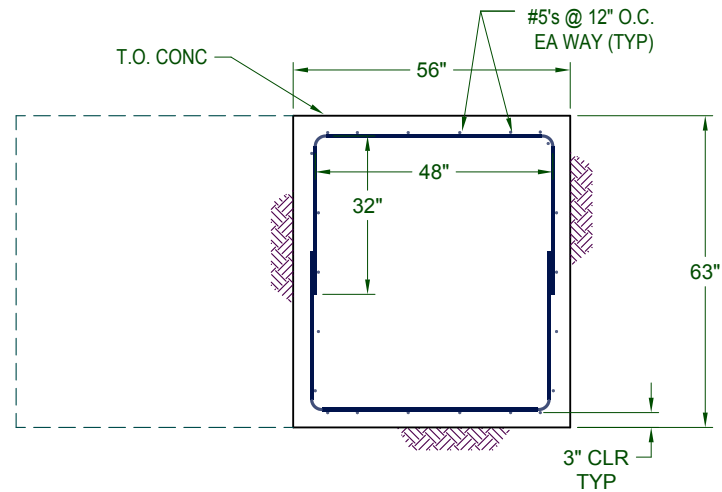
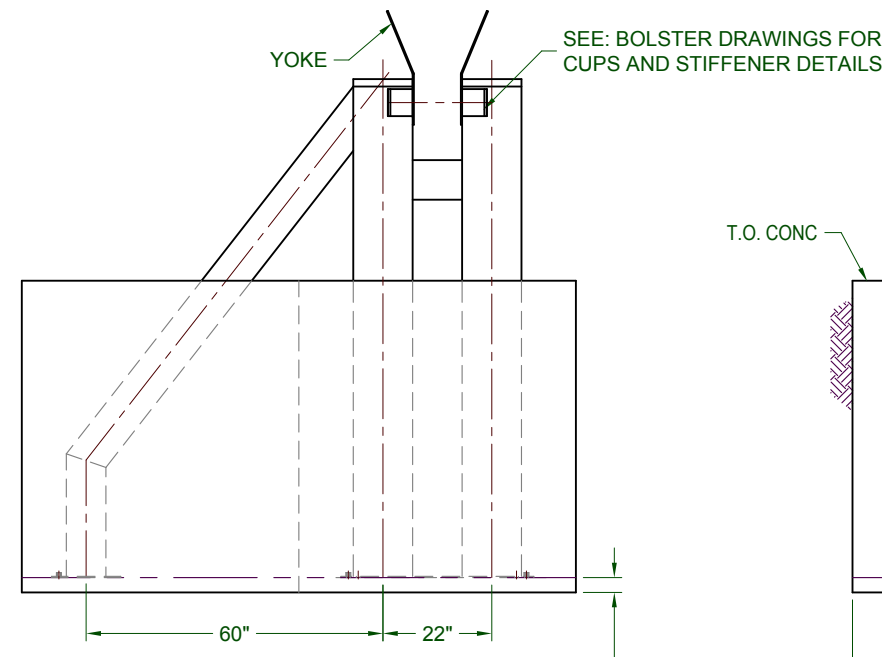


REBAR DETAILS



REINFORCEMENT SECTION "A-A"

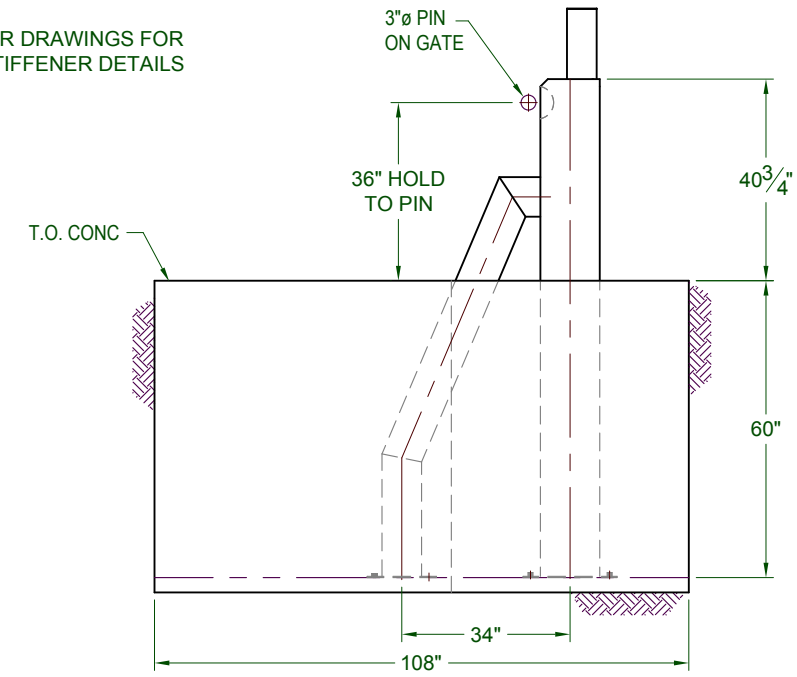
SCALE: NTS



SECTION "B-B"

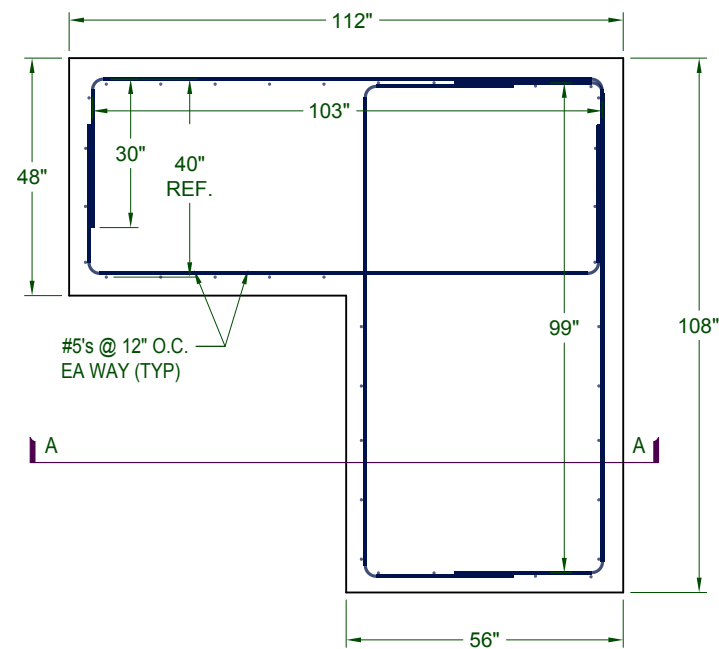
SCALE: NTS

3" LEVELING PAD
(POURED PRIOR TO
SETTING BOLSTERS)



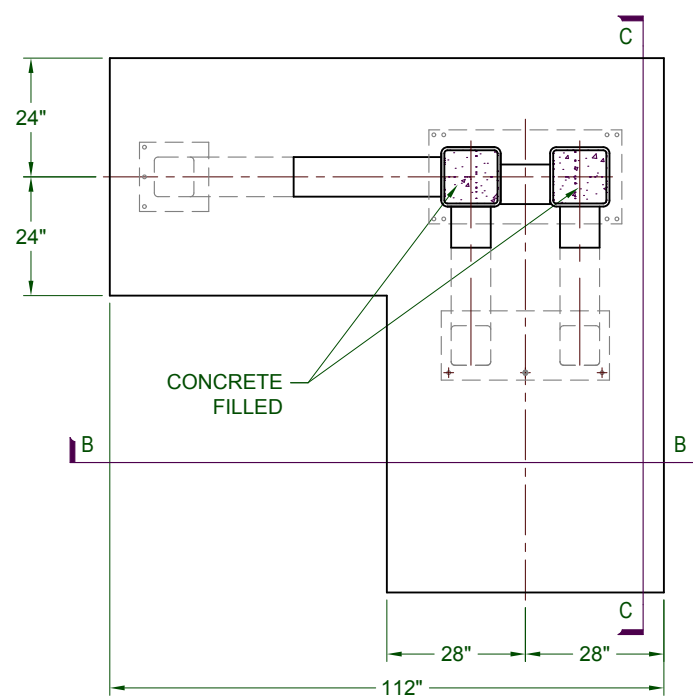
SECTION "C-C"

SCALE: NTS



REINFORCEMENT PLAN

SCALE: NTS



PLAN VIEW

SCALE: NTS

ALL FOUNDATIONS SHALL BEAR ON UNDISTURBED EARTH. SIDES OF FOUNDATION SHALL BE FORMED IN THE EXCAVATED MATERIAL IF POSSIBLE. OTHERWISE, SIDEWALLS SHALL BE FORMED WITH THE INDICATED DIMENSIONS.

THE FIRST 3" OF THE CONCRETE PAD TO BE A LEVELING PAD, POUR BEFORE INSERTING THE STEEL BOLSTER ASSEMBLY.

ALL CONCRETE SHALL BE A CONTROLLED STONE GRAVEL MIX PRODUCED, TESTED, TRANSPORTED, PROTECTED AND PLACED IN ACCORDANCE WITH THE LATEST AMERICAN CONCRETE INSTITUTE RECOMMENDATIONS. FOLLOW ACI RECOMMENDATIONS FOR HOT WEATHER PLACEMENT, CURING AND MIX DESIGN.

OPTIMUM CONCRETE MIX: 4000 PSI COMPRESSIVE STRENGTH.
MINIMUM 600 LB./CU.YD. CEMENT CONTENT
MAXIMUM 0.50 WATER CONTENT.
6% AIR CONTENT
4" SLUMP

REINFORCING STEEL SHALL BE DEFORMED BARS (ASTM A-615) WITH A MINIMUM YIELD STRENGTH OF 60,000 PSI.

LAP ALL REINFORCING 36 BAR DIAMETERS.

CHAMFER ALL EXPOSED CONCRETE EDGES 3/4".

Rev.:	Revisions:	Date:
1	Lateral kicker is now made of three parts and dimension 108" was 75"	10/25/10 MS
2	Added 99" x 32" rebar and changed short leg (30") of 103" rebar to 32"	11/22/10 MS

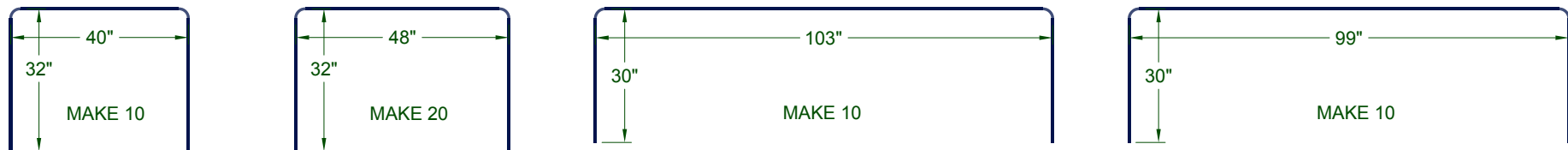
DO NOT SCALE

NOTICE
THE INFORMATION CONTAINED ON THIS DOCUMENT IS CONFIDENTIAL. ANY DISSEMINATION, UNAPPROVED DISCLOSURE OR COPYING OF THIS INFORMATION IS STRICTLY PROHIBITED.
UNLESS OTHERWISE SPECIFIED DIMENSIONS ARE IN INCHES
ANGLES ± 1°
X/X ± 1/32, XX ± .01, .XXX ± .005

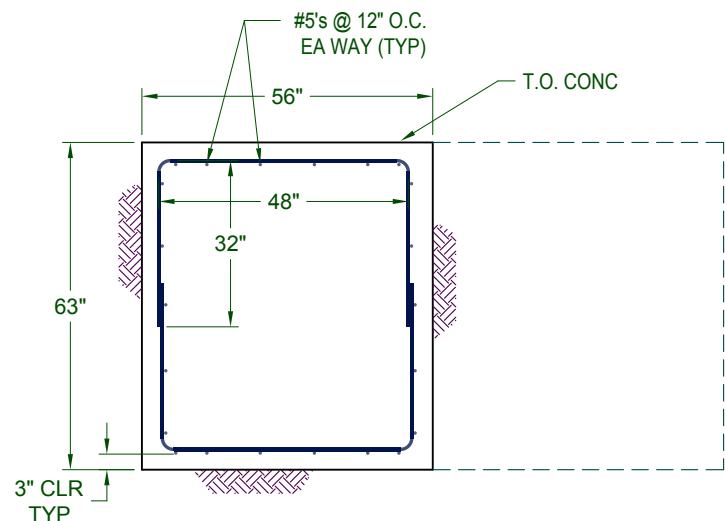
Date: 04/27/07
Dwn. By: MKS
Ckd. By: DMR



Dwg.: K12 Foundation - Yoke End **Lefthand**.dwg
Title: Crash Gate Foundation - LH Yoke End

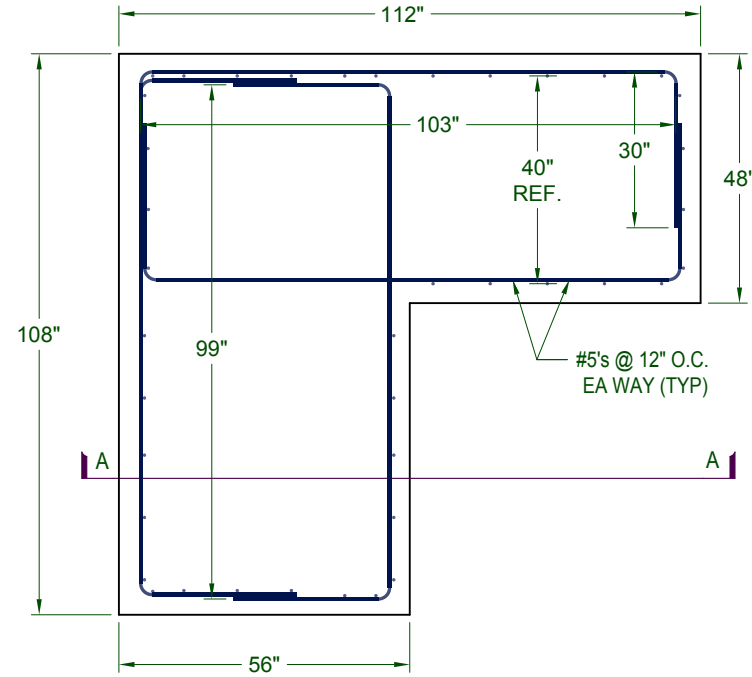


REBAR DETAILS



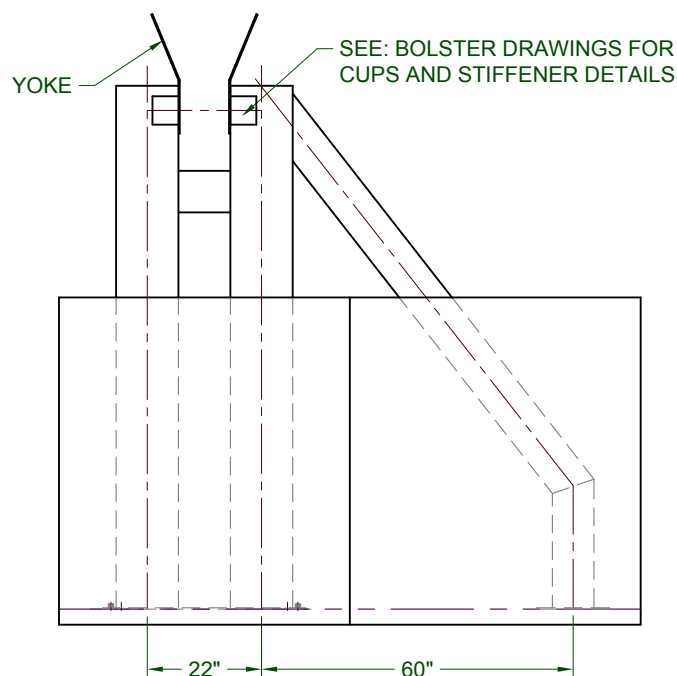
REINFORCEMENT SECTION "A-A"

SCALE: NTS



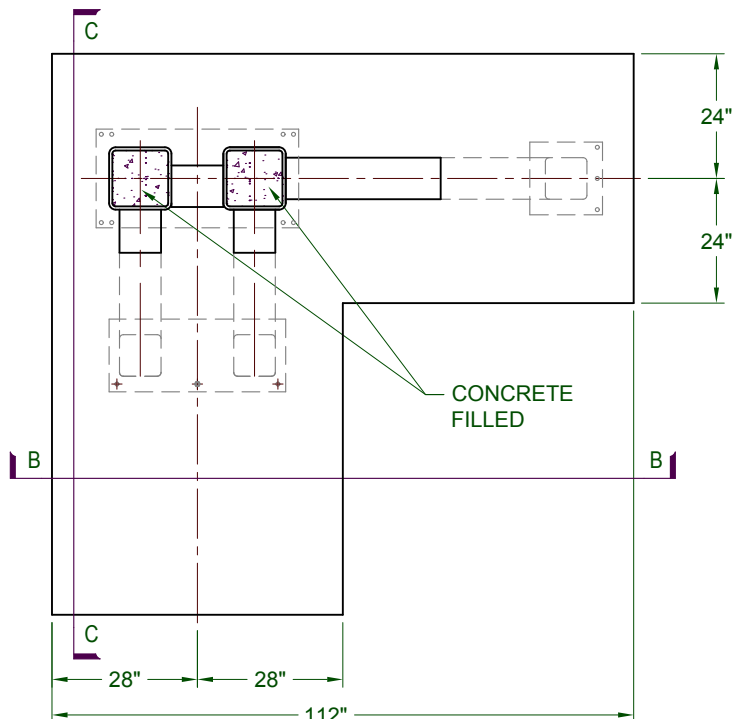
REINFORCEMENT PLAN

SCALE: NTS



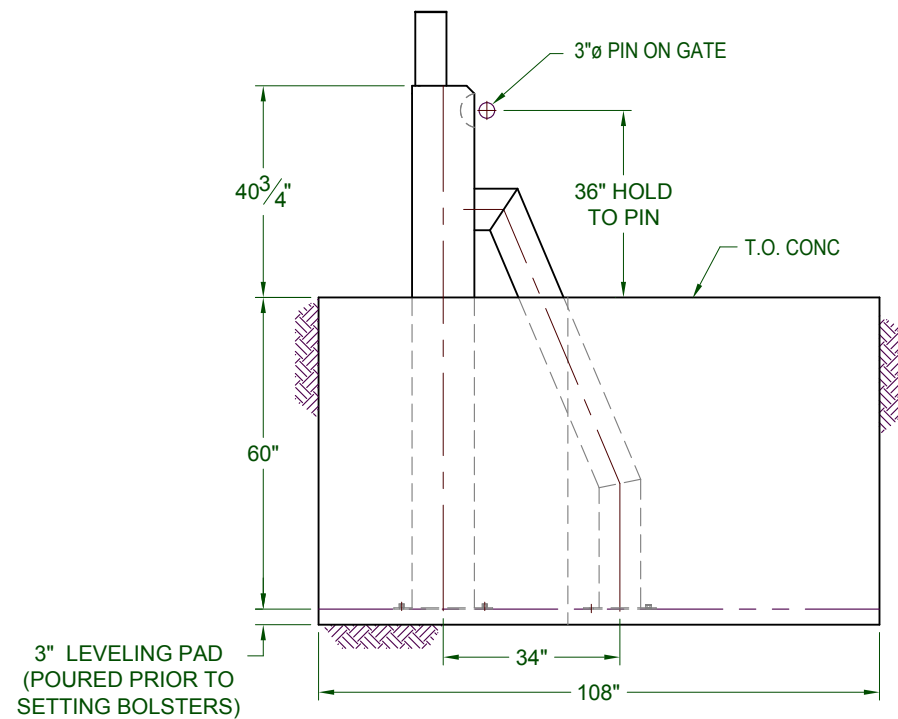
SECTION "B-B"

SCALE: NTS



PLAN VIEW

SCALE: NTS



SECTION "C-C"

SCALE: NTS

ALL FOUNDATIONS SHALL BEAR ON UNDISTURBED EARTH. SIDES OF FOUNDATION SHALL BE FORMED IN THE EXCAVATED MATERIAL IF POSSIBLE. OTHERWISE, SIDEWALLS SHALL BE FORMED WITH THE INDICATED DIMENSIONS.

THE FIRST 3" OF THE CONCRETE PAD TO BE A LEVELING PAD, POUR BEFORE INSERTING THE STEEL BOLSTER ASSEMBLY.

ALL CONCRETE SHALL BE A CONTROLLED STONE GRAVEL MIX PRODUCED, TESTED, TRANSPORTED, PROTECTED AND PLACED IN ACCORDANCE WITH THE LATEST AMERICAN CONCRETE INSTITUTE RECOMMENDATIONS. FOLLOW ACI RECOMMENDATIONS FOR HOT WEATHER PLACEMENT, CURING AND MIX DESIGN.

OPTIMUM CONCRETE MIX: 4000 PSI COMPRESSIVE STRENGTH.
 MINIMUM 600 LB./CU.YD. CEMENT CONTENT
 MAXIMUM 0.50 WATER CONTENT.
 6% AIR CONTENT
 4" SLUMP

REINFORCING STEEL SHALL BE DEFORMED BARS (ASTM A-615) WITH A MINIMUM YIELD STRENGTH OF 60,000 PSI.

LAP ALL REINFORCING 36 BAR DIAMETERS.

CHAMFER ALL EXPOSED CONCRETE EDGES 3/4".

Rev.:	Revisions:	Date:
1	Lateral kicker is now made of three parts and dimension 108" was 75"	10/25/10 MS
2	Added 99" x 32" rebar and changed short leg (30") of 103" rebar to 32"	11/22/10 MS

DO NOT SCALE

NOTICE
 THE INFORMATION CONTAINED ON THIS DOCUMENT IS CONFIDENTIAL. ANY DISSEMINATION, UNAPPROVED DISCLOSURE OR COPYING OF THIS INFORMATION IS STRICTLY PROHIBITED.
 UNLESS OTHERWISE SPECIFIED DIMENSIONS ARE IN INCHES
 ANGLES ± 1°
 X/X ± 1/32, XX ± .01, XXX ± .005

Date: 04/27/07
 Drn. By: MKS
 Ckd. By: DMR

AG AutoGate
 Gate Entry Systems
 Berlin Heights, Ohio
 FAX (419) 588-3514

Dwg.: K12 Foundation - Yoke End **Righthand.dwg**
 Title: Crash Gate Foundation - RH Yoke End