

**REINFORCEMENT PLAN**

SCALE: NTS

PER: ASTM 2656-07, SPECIFICALLY 7.2.2;  
 THE FOUNDATION SHALL BE POURED ON UNDISTURBED SOIL, OR CONTROLLED AND COMPACTED FILL TO A DENSITY OF NOT LESS THAN 90% MAXIMUM DRY DENSITY IN ACCORDANCE WITH TEST METHODS D1556 AND D2922 AND AASHTO METHOD OF TEST T099.

SIDES OF FOUNDATION SHALL BE FORMED IN EXCAVATED MAT'L., IF POSSIBLE. OTHERWISE, SIDEWALLS SHALL BE FORMED WITH INDICATED DIMENSIONS. ALL BACKFILL MATERIAL AND REPLACEMENT METHODS MUST COMPLY WITH STATED CODES LISTED ABOVE.

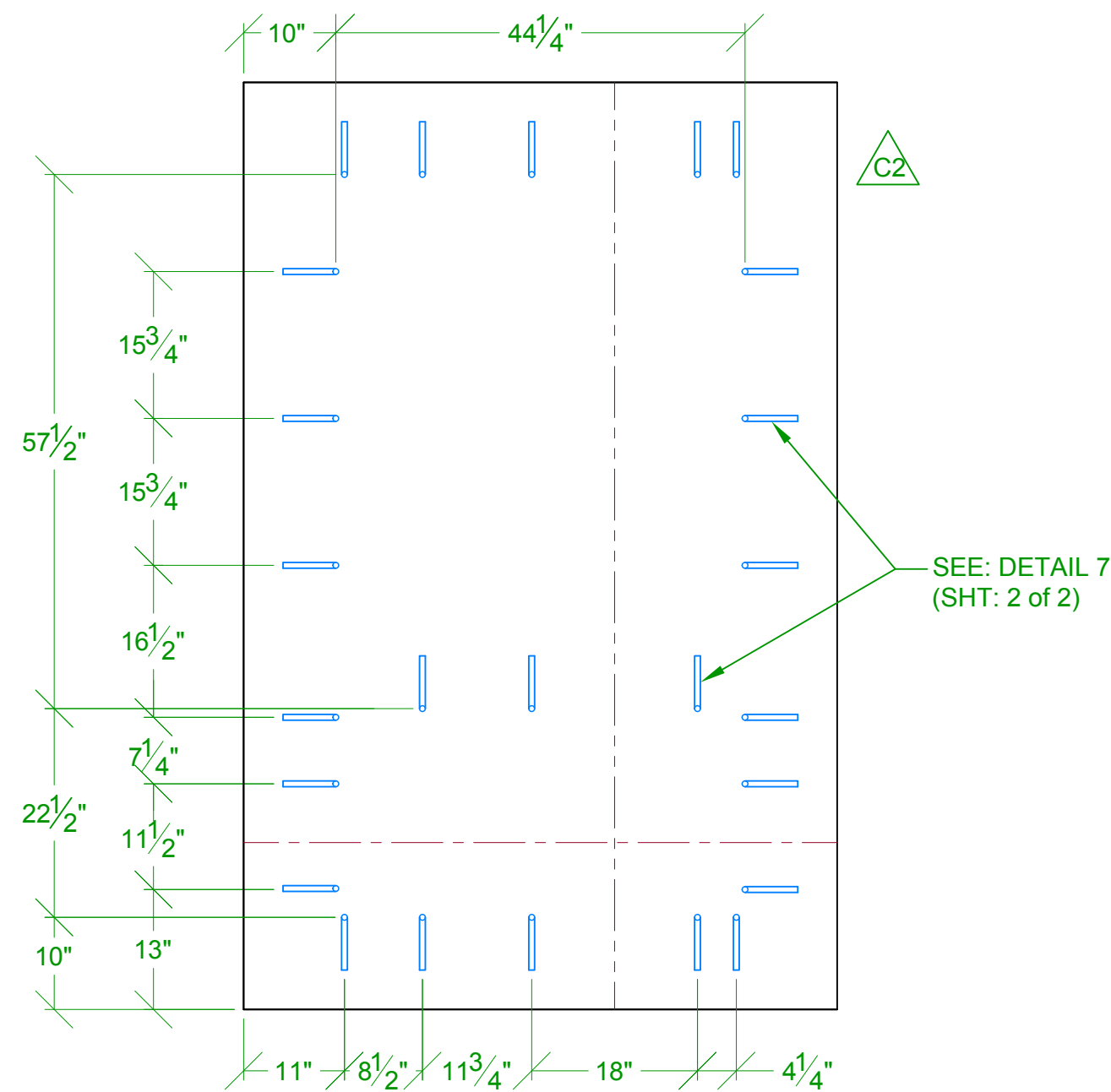
INSTALL REBAR ITEMS 5, 6, AND 7 WITH FIRST 6" CONC. LEVELING PAD POUR, BEFORE INSERTING THE STEEL BOLSTER ASSEMBLY AND FINAL REBAR.

ALL CONCRETE SHALL BE A CONTROLLED STONE GRAVEL MIX PRODUCED, TESTED, TRANSPORTED, PROTECTED, AND PLACED IN ACCORDANCE WITH THE LATEST AMERICAN CONCRETE INSTITUTE RECOMMENDATIONS. FOLLOW ACI RECOMMENDATIONS FOR CURING AND MIX DESIGN WITH CONSIDERATION FOR CLIMATE AND CONDITIONS.

OPTIMUM CONCRETE MIX: 4000 PSI COMPRESSIVE STRENGTH.  
 MINIMUM 600 LB./CU.YD. CEMENT CONTENT  
 MAXIMUM 0.50 WATER CONTENT.  
 6% AIR CONTENT  
 4" SLUMP

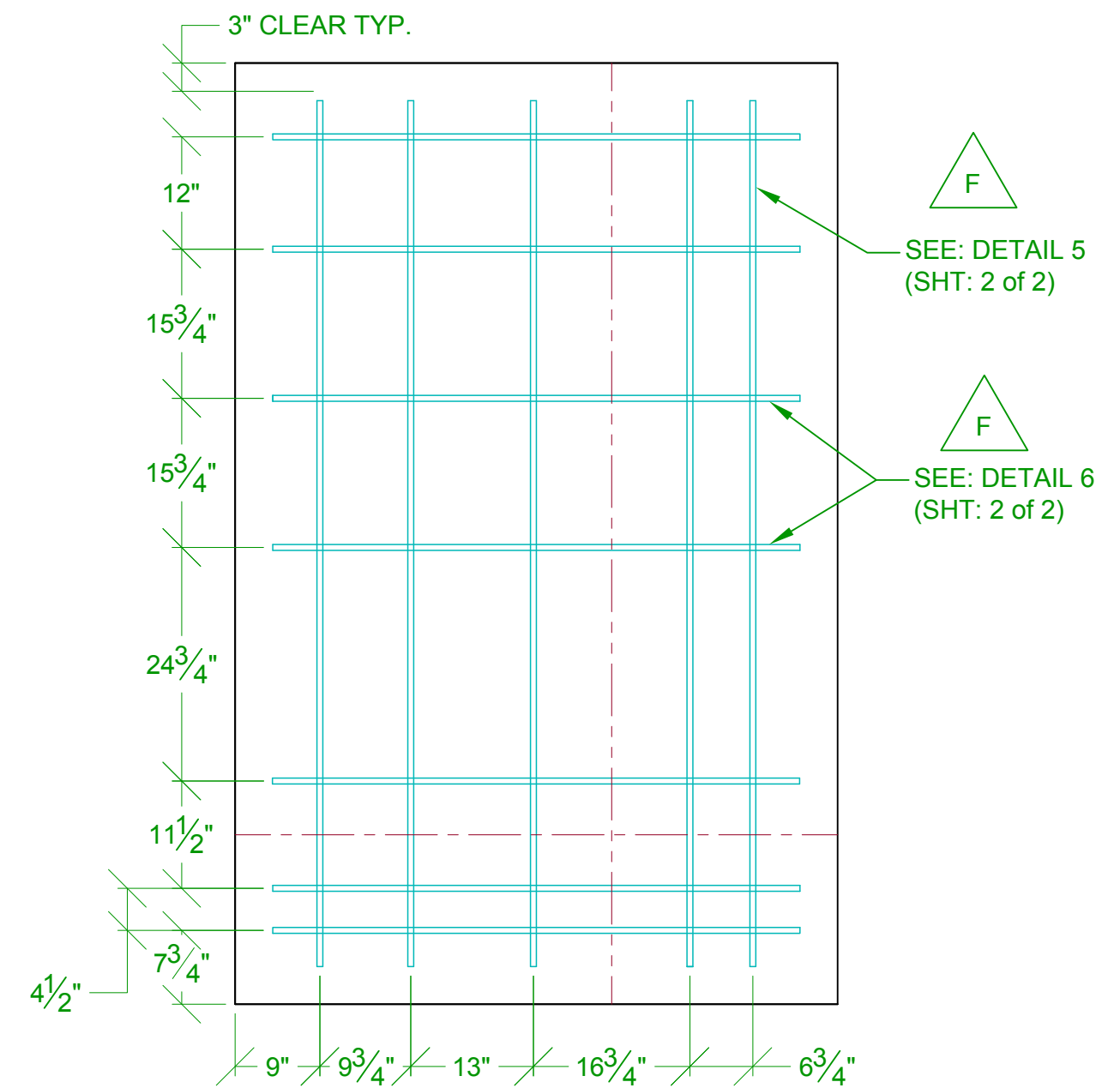
REINFORCING STEEL SHALL BE DEFORMED BARS (ASTM A-615) WITH A MINIMUM YIELD STRENGTH OF 60,000 PSI.

CHAMFER ALL EXPOSED CONCRETE EDGES 3/4".



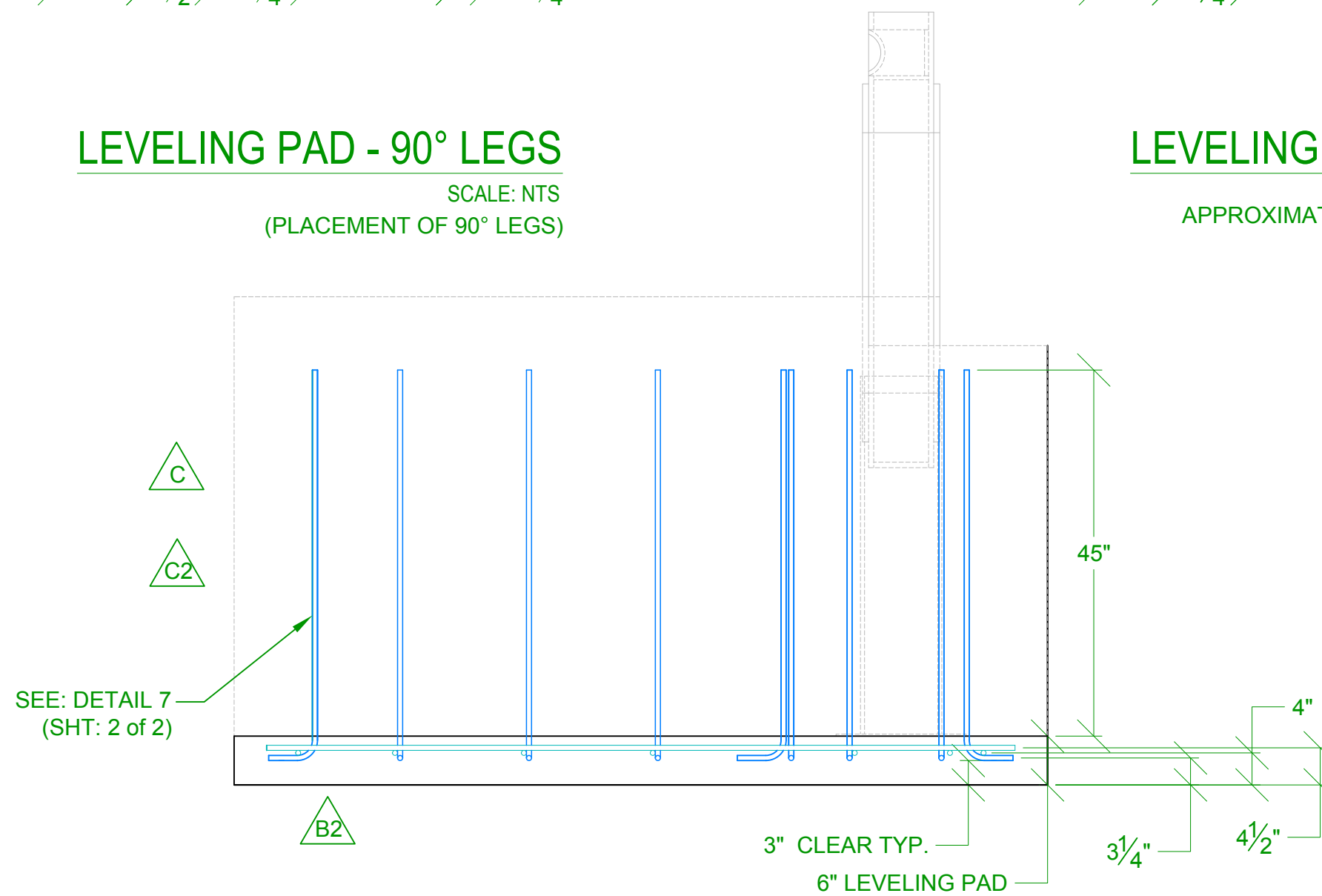
**LEVELING PAD - 90° LEGS**

SCALE: NTS  
 (PLACEMENT OF 90° LEGS)



**LEVELING PAD - # REBAR**

SCALE: NTS  
 APPROXIMATE LOCATION OF #5 REBAR  
 IN BOTH DIRECTIONS



**LEVELING PAD REINFORCEMENT PLAN SECTION**

SCALE: NTS

Rev.:	Revisions:	Date:	Drn. By:	Ckd. By:	Rev.:	Revisions:	Date:	Drn. By:	Ckd. By:
F	STRAIGHT REBAR #5 WAS 94" LG. & #6 WAS 58" LG.	07/18/14	MKS	EGS	C	Changed the rebar style from T1 to S3 per ECR 010-13	1/28/13	SLD	KLL
E	ADDED NOTE THAT ALL REBAR IS TO BE #5	12/12/13	MKS	DMR	B3	Changed the rebar style	12/27/12	SLD	KLL
D	R/H in titleblock was wrong - corrected the hand to L/H	10/02/13	MKS	DMR	B2	Changed leveling pad from 3" to 6"	08/24/12	MKS	DMR
C2	Changed location of Item 7 hook	1/28/13	SLD	KLL	B1	Changed pad shape	08/24/12	MKS	DMR
C1	Added rebar hook	1/28/13	SLD	KLL	A	Revised - Engineered K4 Crash Foundation Details	12/22/08	MKS	DMR

DO NOT SCALE		NOTICE	
Date:	12/27/12	THE INFORMATION CONTAINED ON THIS DOCUMENT IS CONFIDENTIAL. ANY DISSEMINATION, UNAPPROVED DISCLOSURE OR COPYING OF THIS INFORMATION IS STRICTLY PROHIBITED.	
Drn. By:	SLD	UNLESS OTHERWISE SPECIFIED DIMENSIONS ARE IN INCHES ANGLES ± 1°	
Ckd. By:	KLL	X/X ± 1/32, XX ± .01, XXX ± .005	

Dwg.: M-30 FOUNDATION-Pad Details-OperEnd-L/H  
 Title: M-30 SHIELD Crash Gate Foundation-OperEnd

Berlin Heights, Ohio  
 FAX (419) 588-3514

PER: ASTM 2656-07, SPECIFICALLY 7.2.2;  
 THE FOUNDATION SHALL BE POURED ON UNDISTURBED SOIL, OR CONTROLLED AND COMPACTED FILL TO A DENSITY OF NOT LESS THAN 90% MAXIMUM DRY DENSITY IN ACCORDANCE WITH TEST METHODS D1556 AND D2922 AND AASHTO METHOD OF TEST T099.

SIDES OF FOUNDATION SHALL BE FORMED IN EXCAVATED MAT'L., IF POSSIBLE. OTHERWISE, SIDEWALLS SHALL BE FORMED WITH INDICATED DIMENSIONS. ALL BACKFILL MATERIAL AND REPLACEMENT METHODS MUST COMPLY WITH STATED CODES LISTED ABOVE.

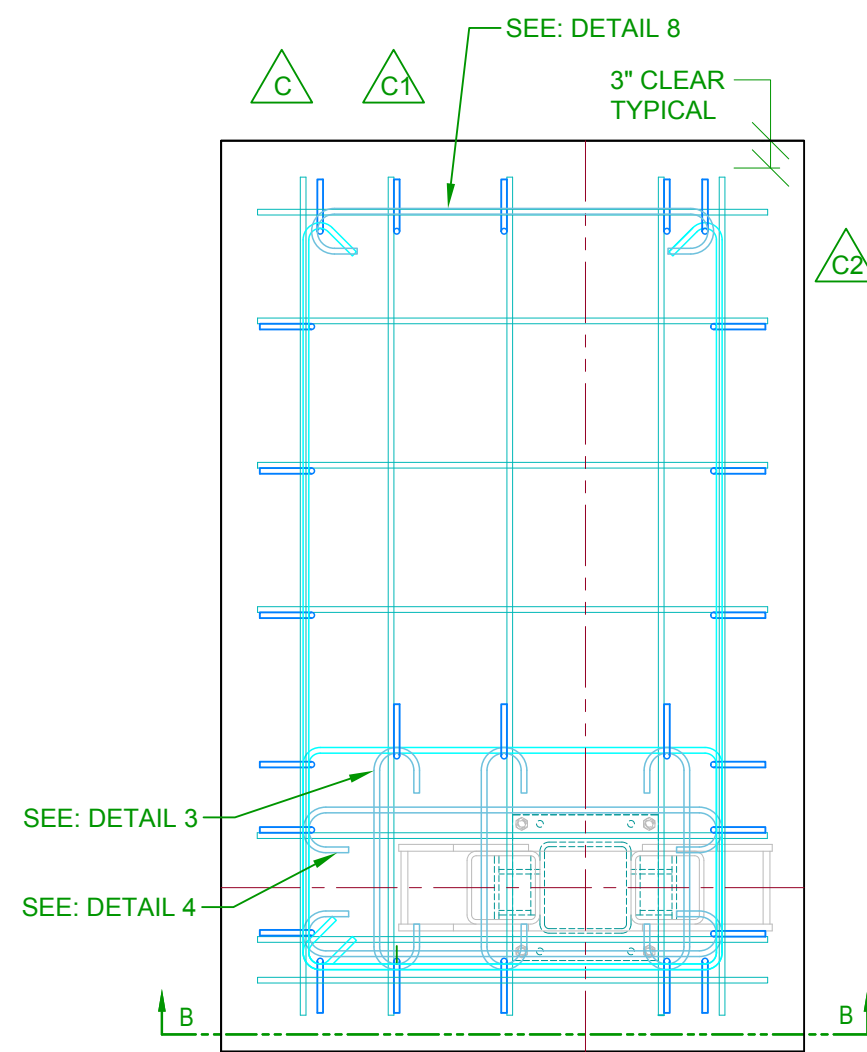
INSTALL REBAR ITEMS 5, 6, AND 7 WITH FIRST 6" CONC. LEVELING PAD POUR, BEFORE INSERTING THE STEEL BOLSTER ASSEMBLY AND FINAL REBAR.

ALL CONCRETE SHALL BE A CONTROLLED STONE GRAVEL MIX PRODUCED, TESTED, TRANSPORTED, PROTECTED, AND PLACED IN ACCORDANCE WITH THE LATEST AMERICAN CONCRETE INSTITUTE RECOMMENDATIONS. FOLLOW ACI RECOMMENDATIONS FOR CURING AND MIX DESIGN WITH CONSIDERATION FOR CLIMATE AND CONDITIONS.

OPTIMUM CONCRETE MIX: 4000 PSI COMPRESSIVE STRENGTH.  
 MINIMUM 600 LB./CU.YD. CEMENT CONTENT  
 MAXIMUM 0.50 WATER CONTENT  
 6% AIR CONTENT  
 4" SLUMP

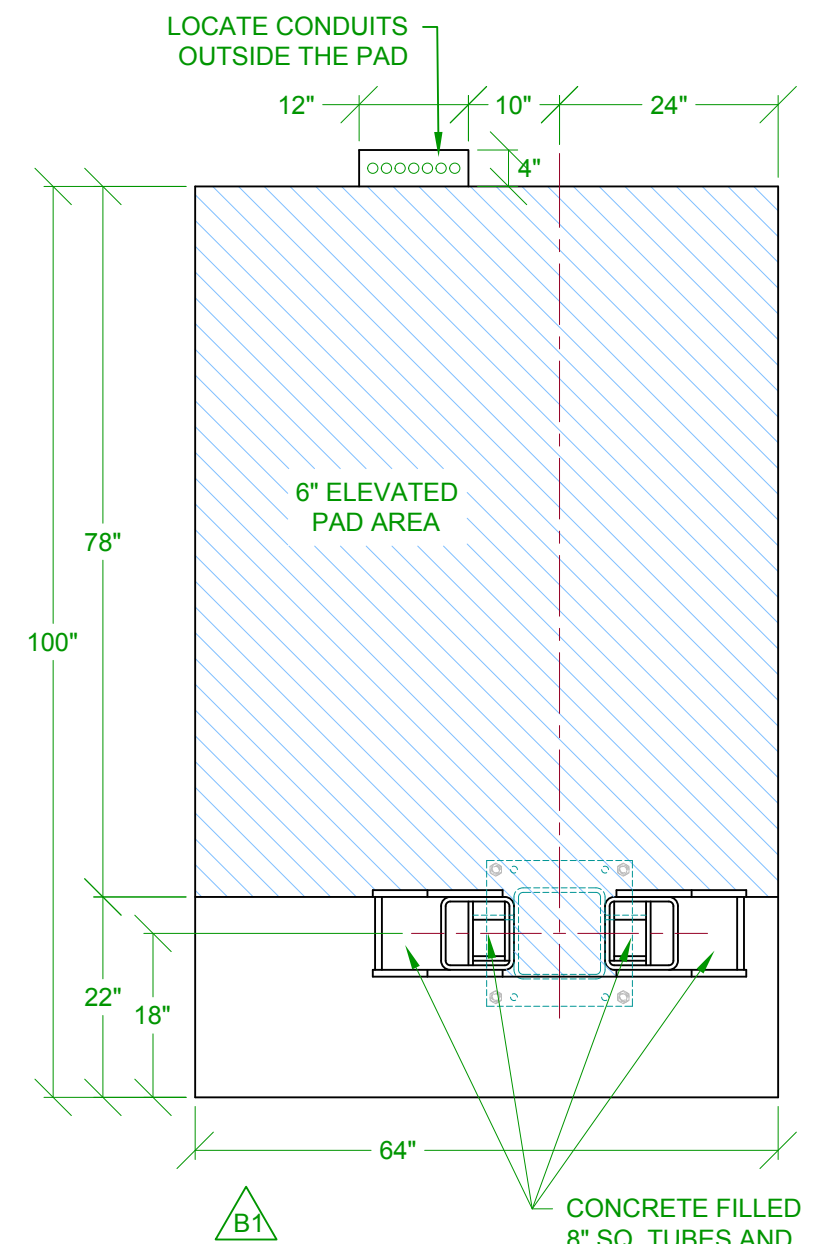
REINFORCING STEEL SHALL BE DEFORMED BARS (ASTM A-615) WITH A MINIMUM YIELD STRENGTH OF 60,000 PSI.

CHAMFER ALL EXPOSED CONCRETE EDGES 3/4".



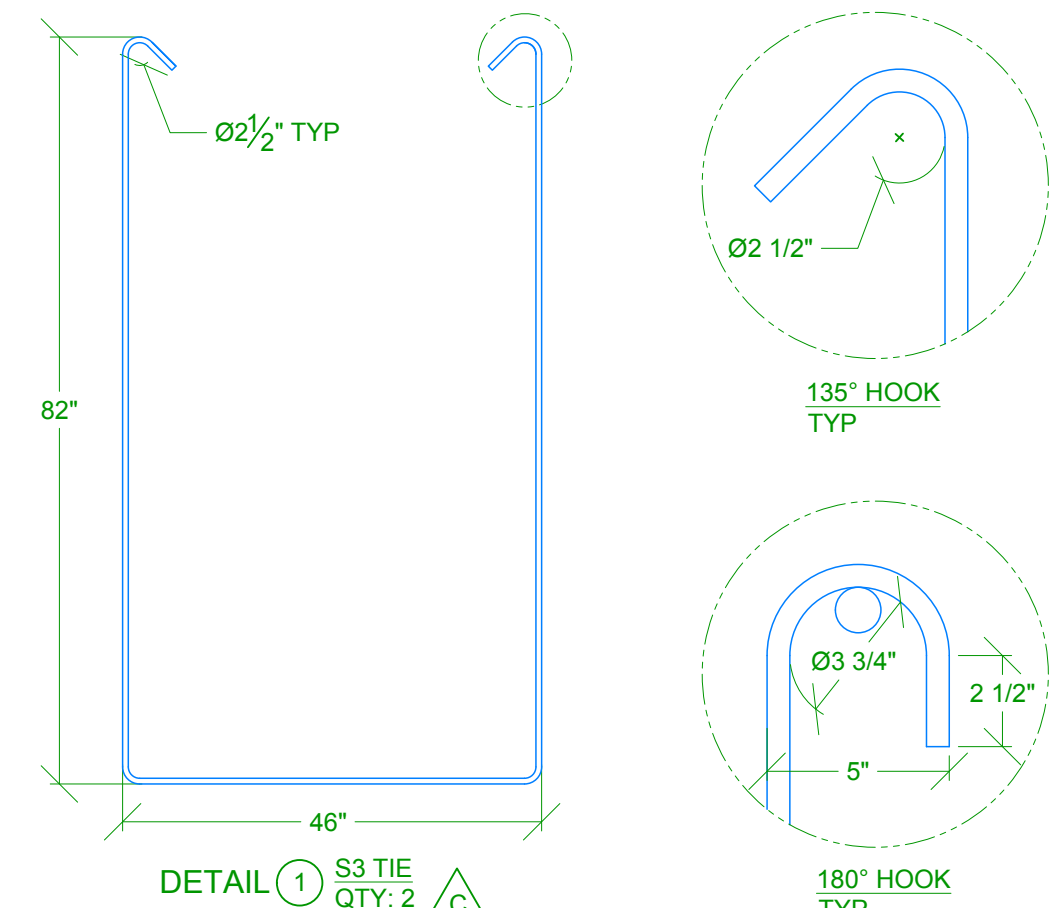
**REINFORCEMENT PLAN**

SCALE: NTS

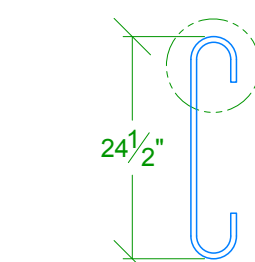


**PLAN VIEW**

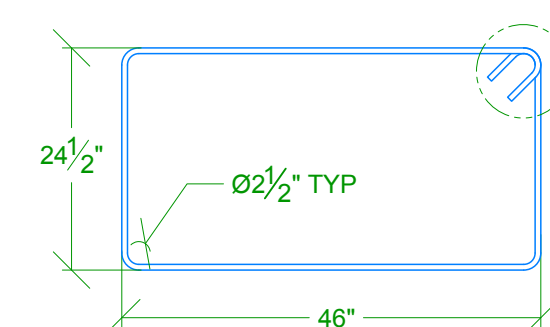
SCALE: NTS



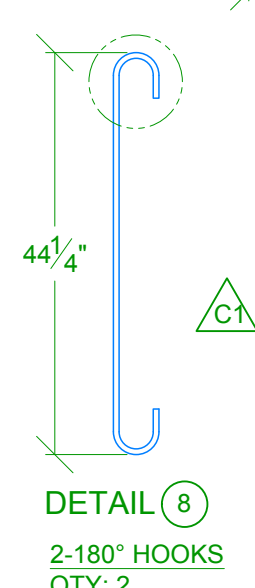
**DETAIL 1** S3 TIE  
 QTY: 2



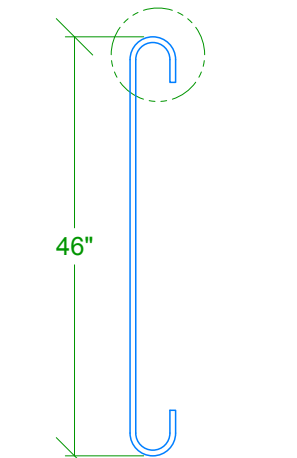
**DETAIL 3**  
 2-180° HOOKS  
 QTY: 3



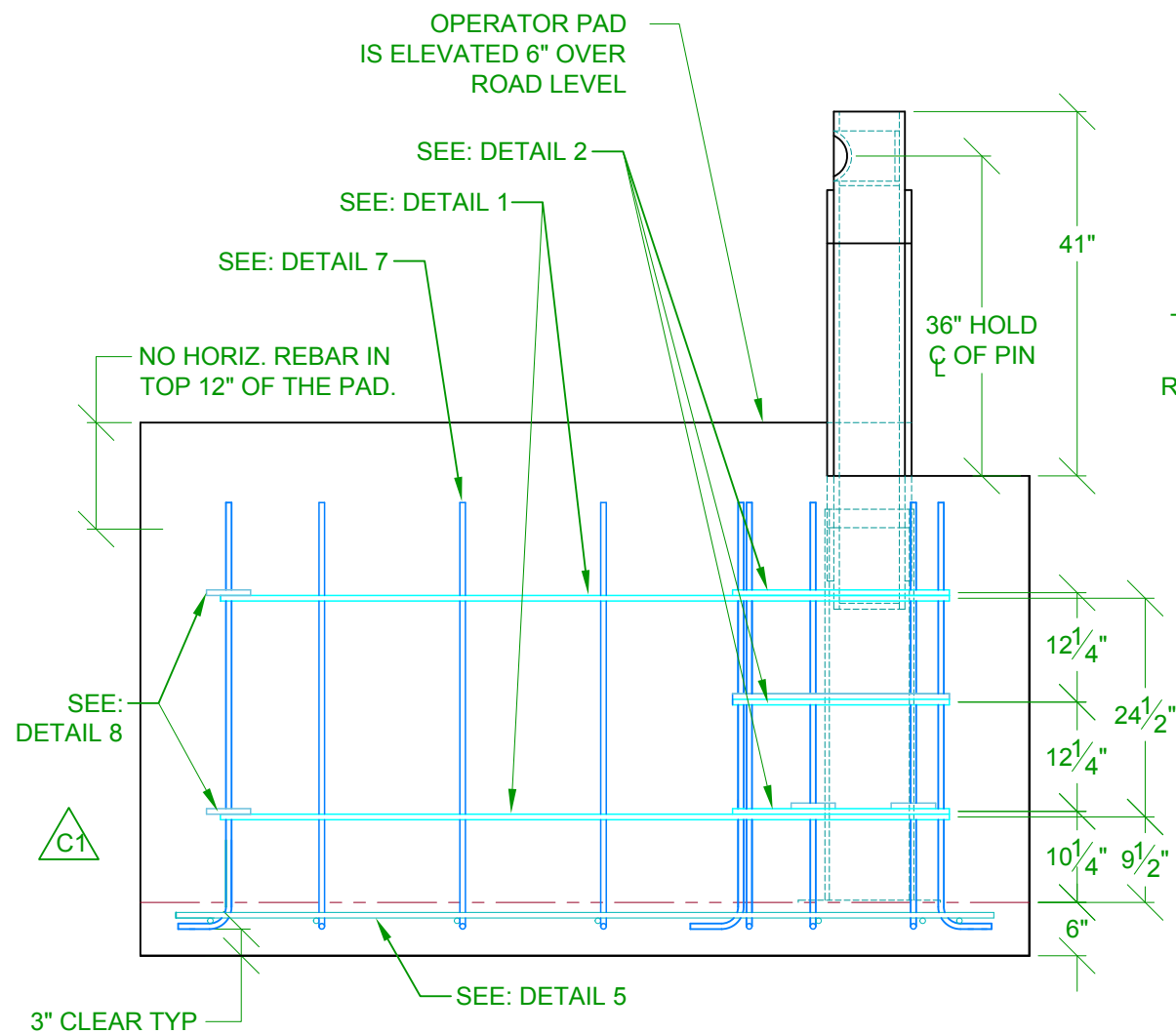
**DETAIL 2** T1 Tie  
 QTY: 3



**DETAIL 8**  
 2-180° HOOKS  
 QTY: 2

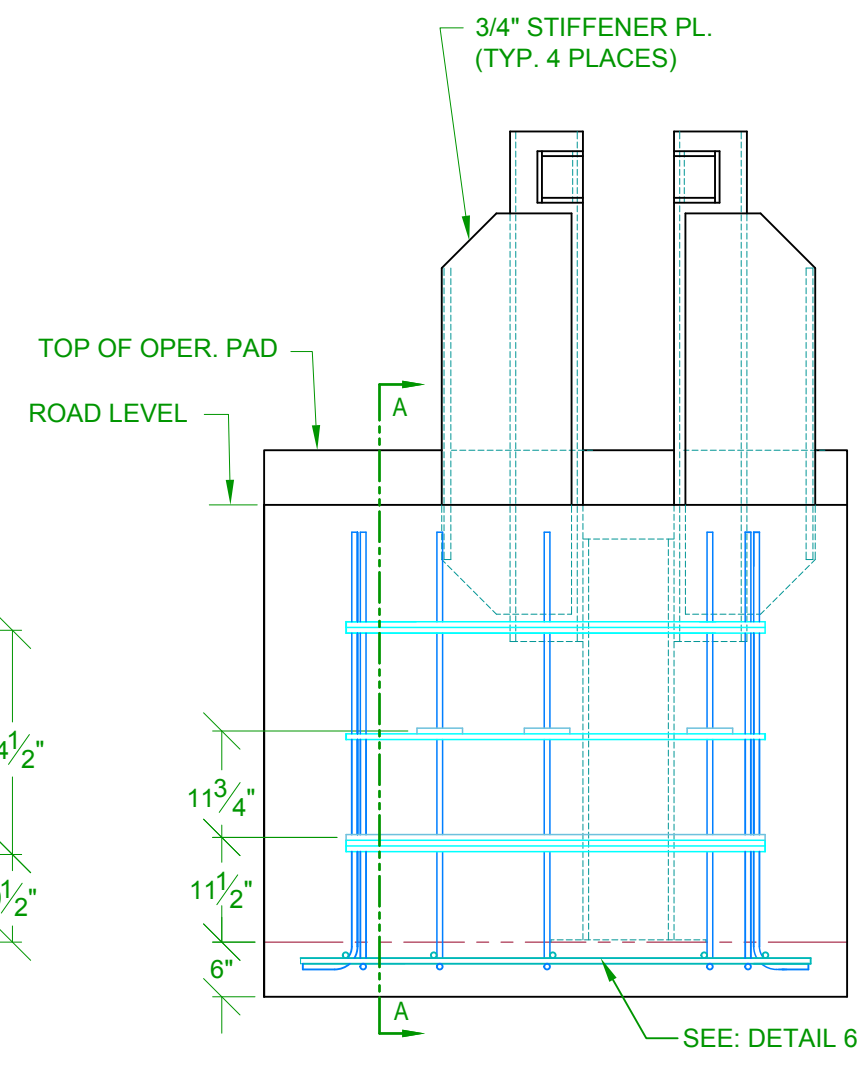


**DETAIL 4**  
 2-180° HOOKS  
 QTY: 2



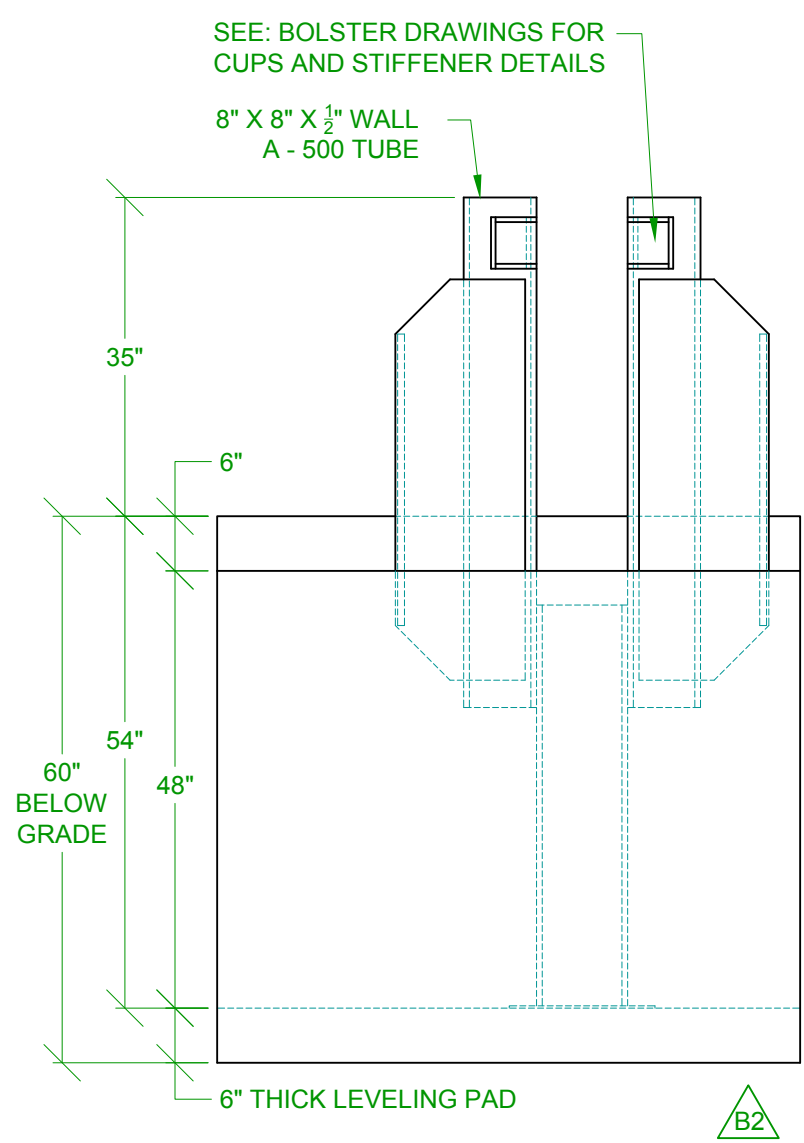
**REINFORCEMENT SECTION "A-A"**

SCALE: NTS



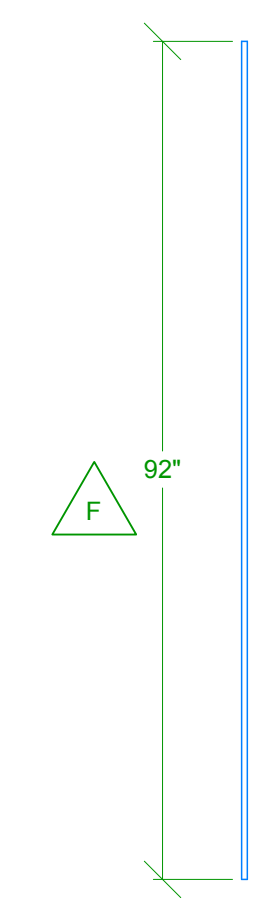
**REINFORCEMENT SECTION "B-B"**

SCALE: NTS

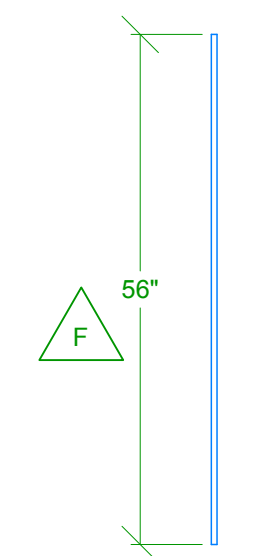


**ELEVATION VIEW**

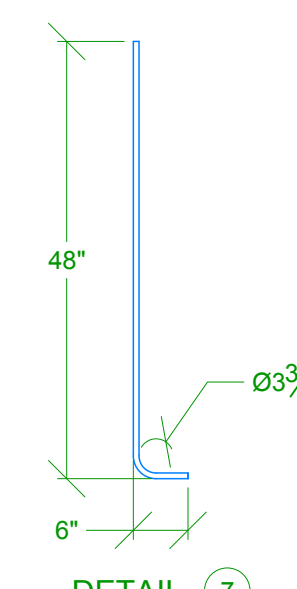
SCALE: NTS



**DETAIL 5**  
 STRAIGHT  
 QTY: 5



**DETAIL 6**  
 STRAIGHT  
 QTY: 7



**DETAIL 7**  
 90° LEG  
 QTY: 22

**E** NOTE: ALL REBAR TO BE #5

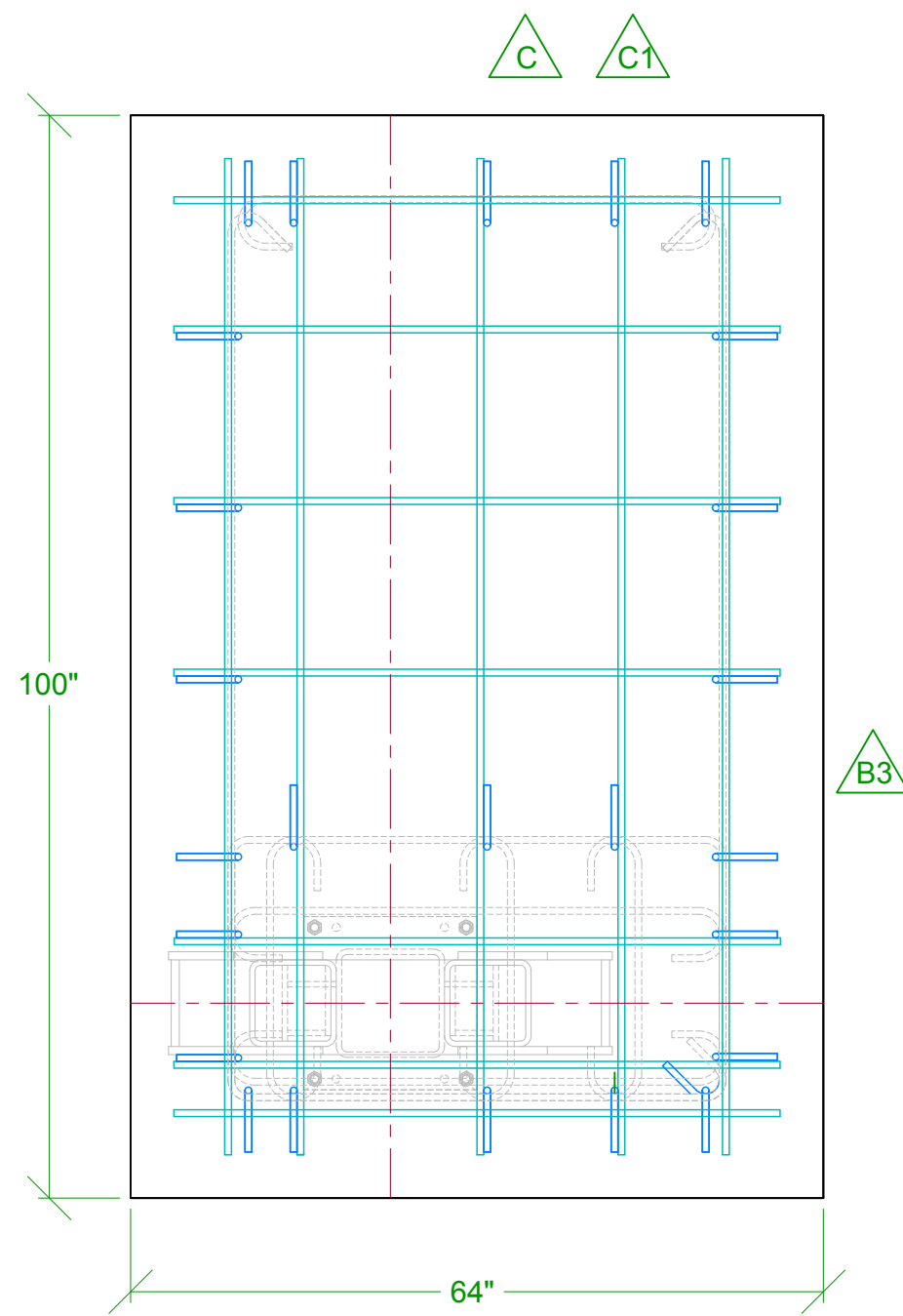
Rev.:	Revisions:	Date:	Drn. By:	Ckd. By:	Rev.:	Revisions:	Date:	Drn. By:	Ckd. By:
F	STRAIGHT REBAR #5 WAS 94" LG. & #6 WAS 58" LG.	07/18/14	MKS	EGS	C	Changed the rebar style from T1 to S3 per ECR 010-13	1/28/13	SLD	KLL
E	ADDED NOTE THAT ALL REBAR IS TO BE #5	12/12/13	MKS	DMR	B3	Changed the rebar style	12/27/12	SLD	KLL
D	R/H in titleblock was wrong - corrected the hand to L/H	10/03/13	MKS	DMR	B2	Changed leveling pad from 3" to 6"	08/24/12	MKS	DMR
C2	Changed location of Item 7 hook	1/28/13	SLD	KLL	B1	Changed pad shape	08/24/12	MKS	DMR
C1	Added rebar hook	1/28/13	SLD	KLL	A	Revised - Engineered K4 Crash Foundation Details	12/22/08	MKS	DMR

**DO NOT SCALE**

**NOTICE**  
 THE INFORMATION CONTAINED ON THIS DOCUMENT IS CONFIDENTIAL. ANY DISSEMINATION, UNAPPROVED DISCLOSURE OR COPYING OF THIS INFORMATION IS STRICTLY PROHIBITED.  
 UNLESS OTHERWISE SPECIFIED DIMENSIONS ARE IN INCHES  
 ANGLES ± 1°  
 X/X ± 1/32, .XX ± .01, .XXX ± .005

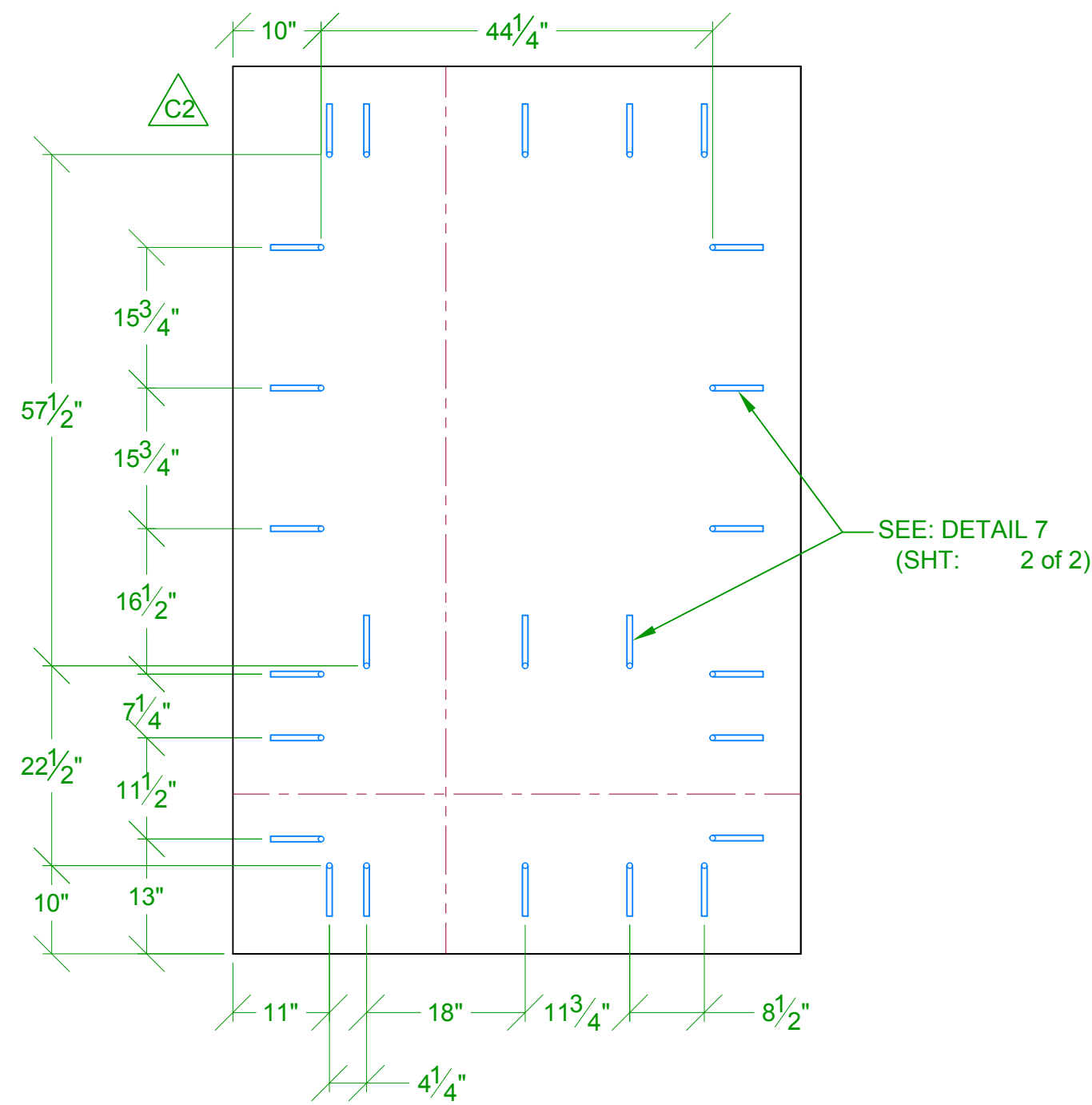
Date: 12/27/12  
 Drn. By: SLD  
 Ckd. By: KLL  
 Dwg.: M-30 FOUNDATION-OperEnd-L/H  
 Title: M-30 SHIELD Crash Gate Foundation-OperEnd

**AG AutoGate**  
 Gate Entry Systems  
 Berlin Heights, Ohio  
 FAX (419) 588-3514



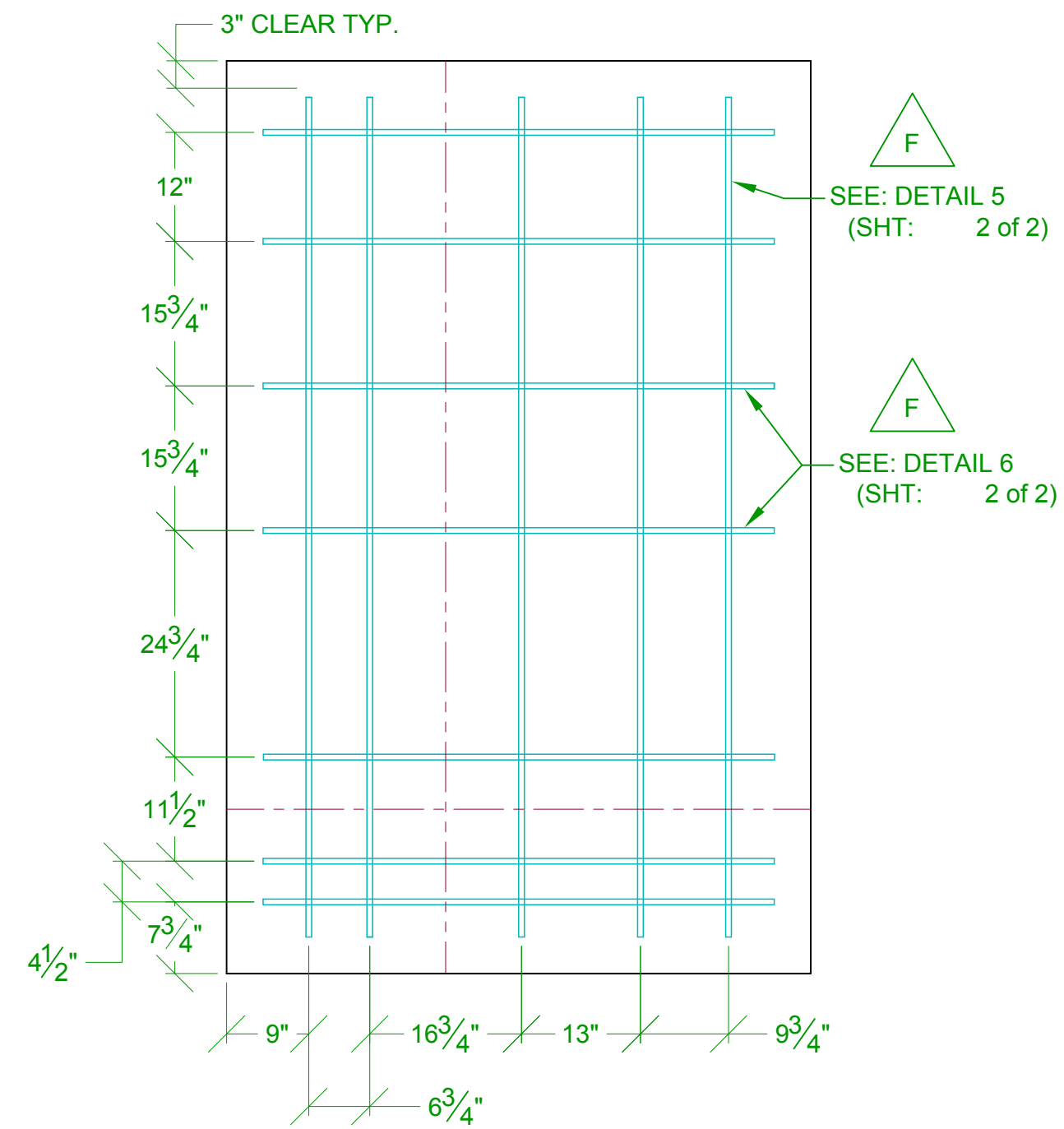
**REINFORCEMENT PLAN**

SCALE: NTS



**LEVELING PAD - 90° LEGS**

SCALE: NTS  
(PLACEMENT OF 90° LEGS)



**LEVELING PAD - # REBAR**

SCALE: NTS  
APPROXIMATE LOCATION OF #5 REBAR  
IN BOTH DIRECTIONS

PER: ASTM 2656-07, SPECIFICALLY 7.2.2;  
THE FOUNDATION SHALL BE POURED ON UNDISTURBED SOIL, OR CONTROLLED AND COMPACTED FILL TO A DENSITY OF NOT LESS THAN 90% MAXIMUM DRY DENSITY IN ACCORDANCE WITH TEST METHODS D1556 AND D2922 AND AASHTO METHOD OF TEST T099.

SIDES OF FOUNDATION SHALL BE FORMED IN EXCAVATED MAT'L., IF POSSIBLE. OTHERWISE, SIDEWALLS SHALL BE FORMED WITH INDICATED DIMENSIONS. ALL BACKFILL MATERIAL AND REPLACEMENT METHODS MUST COMPLY WITH STATED CODES LISTED ABOVE.

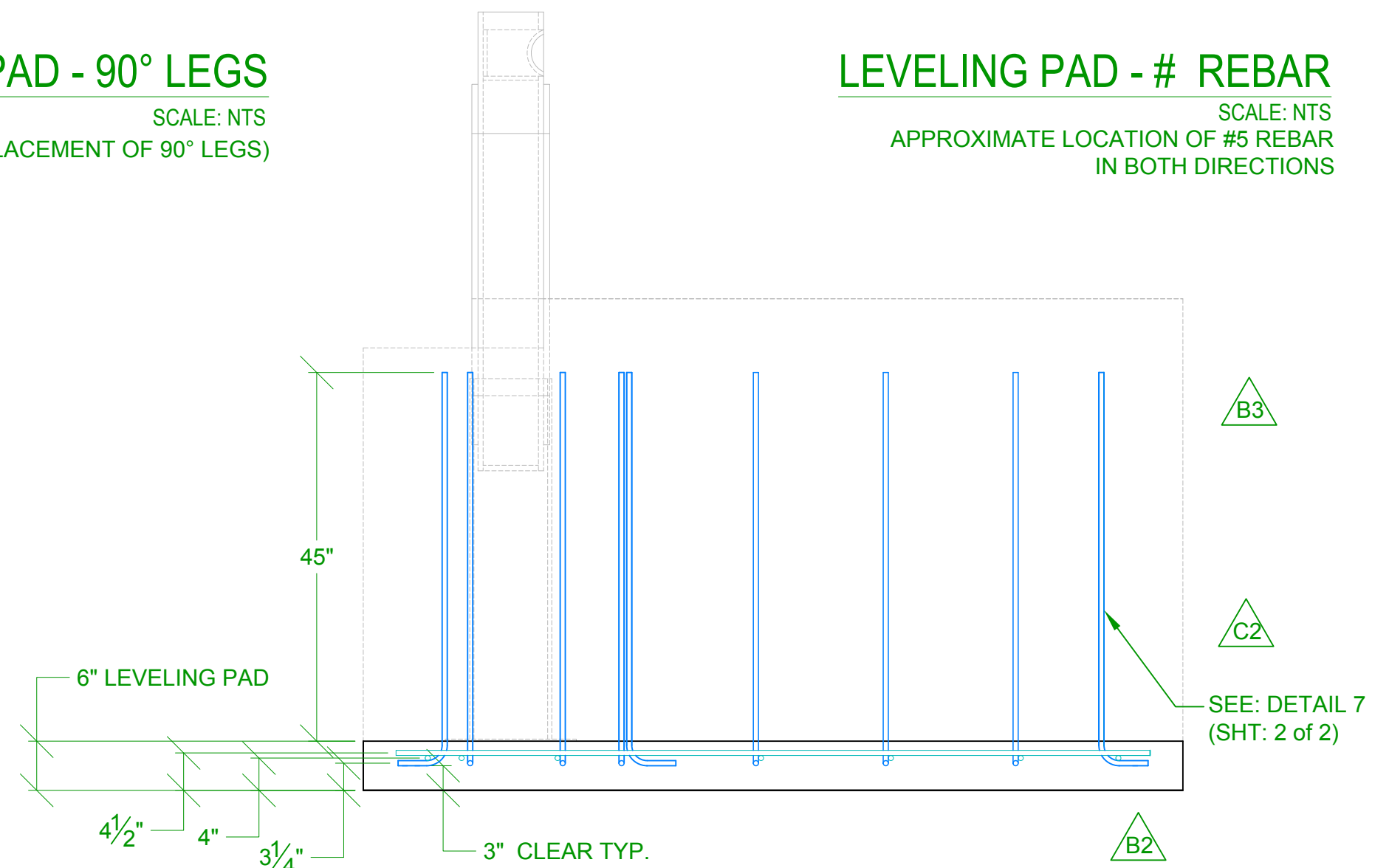
INSTALL REBAR ITEMS 5, 6, AND 7 WITH FIRST 6" CONC. LEVELING PAD POUR, BEFORE INSERTING THE STEEL BOLSTER ASSEMBLY AND FINAL REBAR.

ALL CONCRETE SHALL BE A CONTROLLED STONE GRAVEL MIX PRODUCED, TESTED, TRANSPORTED, PROTECTED, AND PLACED IN ACCORDANCE WITH THE LATEST AMERICAN CONCRETE INSTITUTE RECOMMENDATIONS. FOLLOW ACI RECOMMENDATIONS FOR CURING AND MIX DESIGN WITH CONSIDERATION FOR CLIMATE AND CONDITIONS.

OPTIMUM CONCRETE MIX: 4000 PSI COMPRESSIVE STRENGTH.  
MINIMUM 600 LB./CU.YD. CEMENT CONTENT  
MAXIMUM 0.50 WATER CONTENT.  
6% AIR CONTENT  
4" SLUMP

REINFORCING STEEL SHALL BE DEFORMED BARS (ASTM A-615) WITH A MINIMUM YIELD STRENGTH OF 60,000 PSI.

CHAMFER ALL EXPOSED CONCRETE EDGES 3/4".



**LEVELING PAD REINFORCEMENT PLAN SECTION**

SCALE: NTS

Rev.:	Revisions:	Date:	Drn. By:	Ckd. By:	Rev.:	Revisions:	Date:	Drn. By:	Ckd. By:	NOTICE	Date:	12/27/12
F	STRAIGHT REBAR #5 WAS 94" LG. & #6 WAS 58" LG.	07/18/14	MKS	EGS	C	Changed the rebar style from T1 to S3 per ECR 010-13	1/28/13	SLD	KLL	THE INFORMATION CONTAINED ON THIS DOCUMENT IS CONFIDENTIAL. ANY DISSEMINATION, UNAPPROVED DISCLOSURE OR COPYING OF THIS INFORMATION IS STRICTLY PROHIBITED	Drn. By:	SLD
E	ADDED NOTE THAT ALL REBAR IS TO BE #5	12/12/13	MKS	DMR	B3	Changed the rebar style	12/27/12	SLD	KLL		Ckd. By:	KLL
D	L/H in titleblock was wrong - corrected the hand to R/H	10/02/13	MKS	DMR	B2	Changed leveling pad from 3" to 6"	08/24/12	MKS	DMR	UNLESS OTHERWISE SPECIFIED DIMENSIONS ARE IN INCHES ANGLES ± 1° X/X ± 1/32, .XX ± .01, .XXX ± .005	Dwg.: M-30 FOUNDATION-Pad Details-OperEnd-R/H	
C2	Changed location of Item 7 hook	1/28/13	SLD	KLL	B1	Changed pad shape	08/24/12	MKS	DMR		Title: M-30 SHIELD Crash Gate Foundation-OperEnd	
C1	Added rebar hook	1/28/13	SLD	KLL	A	Revised - Engineered K4 Crash Foundation Details	12/22/08	MKS	DMR			



PER: ASTM 2656-07, SPECIFICALLY 7.2.2;  
 THE FOUNDATION SHALL BE POURED ON UNDISTURBED SOIL, OR CONTROLLED AND COMPACTED FILL TO A DENSITY OF NOT LESS THAN 90% MAXIMUM DRY DENSITY IN ACCORDANCE WITH TEST METHODS D1556 AND D2922 AND AASHTO METHOD OF TEST T099.

SIDES OF FOUNDATION SHALL BE FORMED IN EXCAVATED MAT'L., IF POSSIBLE. OTHERWISE, SIDEWALLS SHALL BE FORMED WITH INDICATED DIMENSIONS. ALL BACKFILL MATERIAL AND REPLACEMENT METHODS MUST COMPLY WITH STATED CODES LISTED ABOVE.

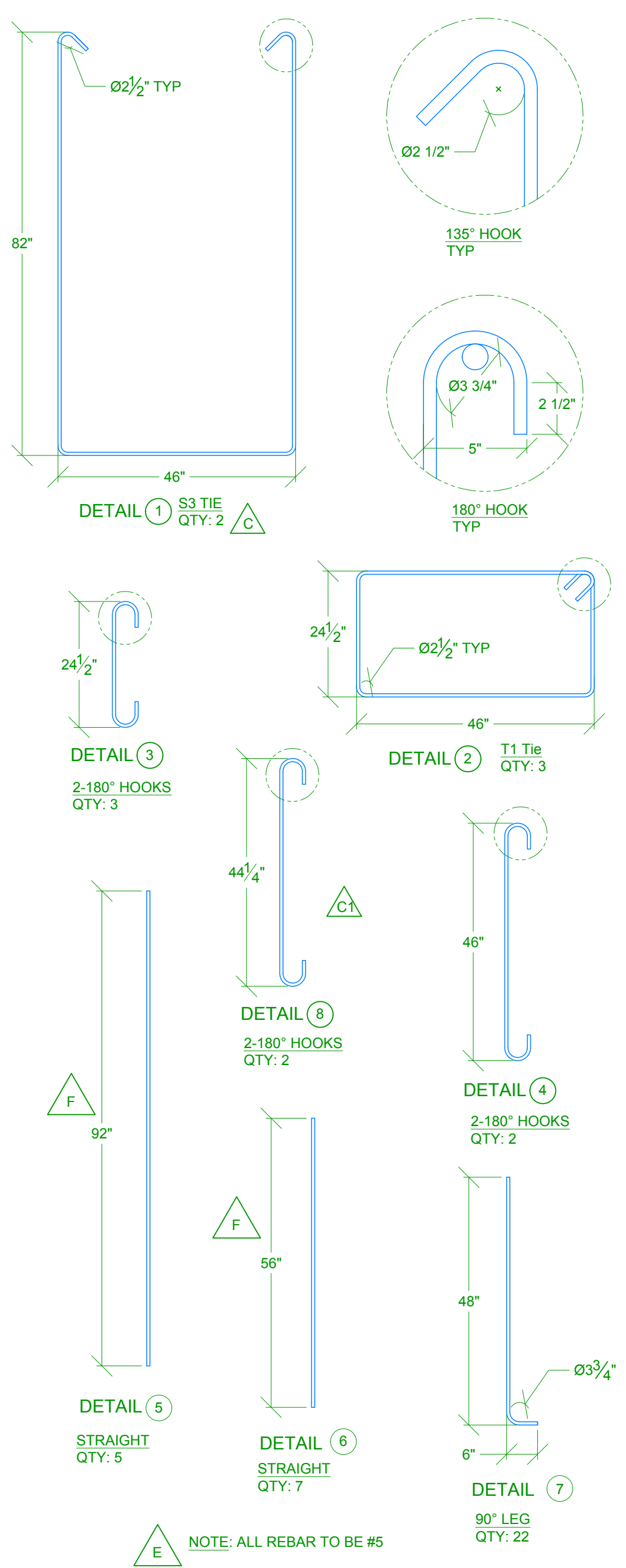
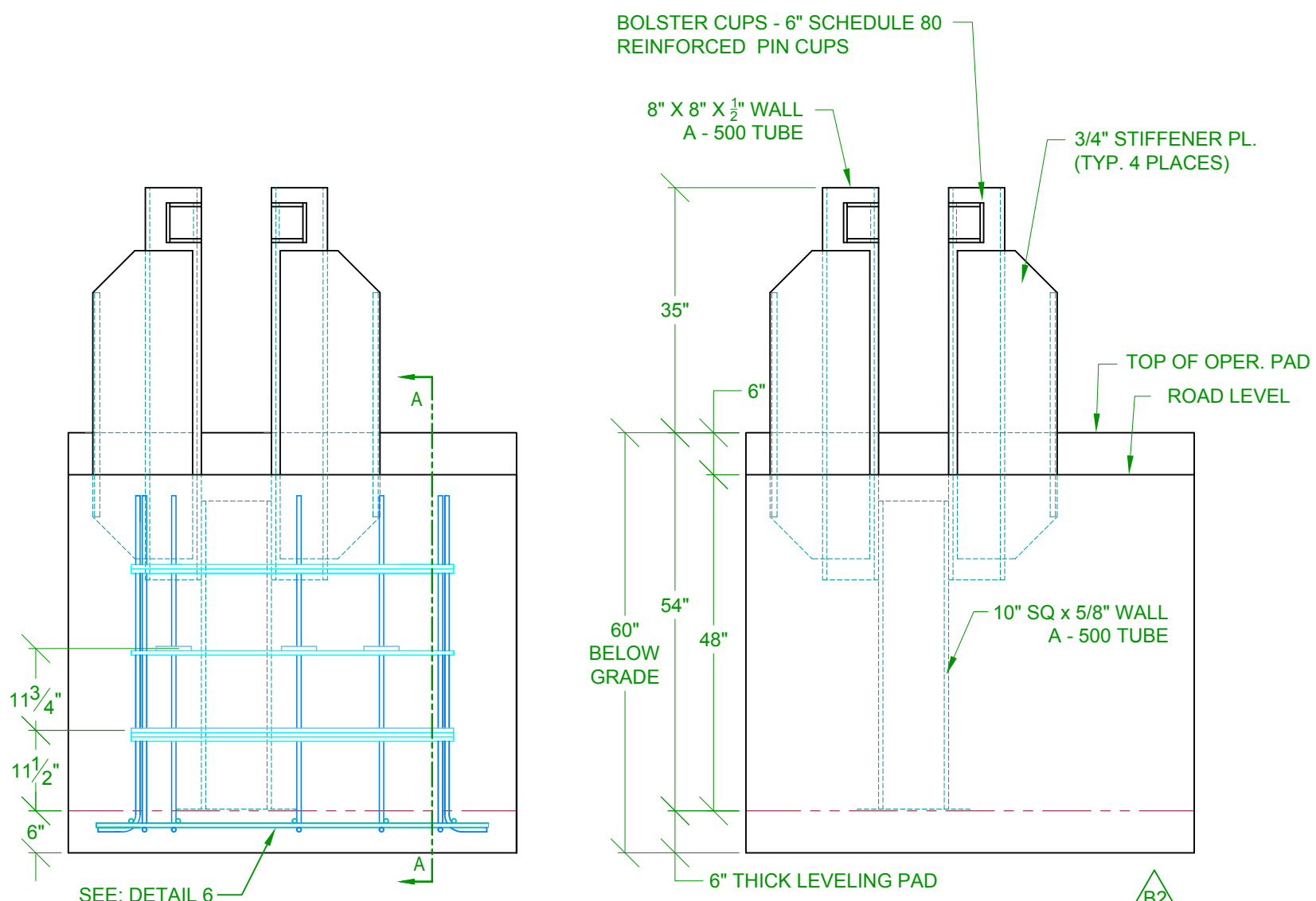
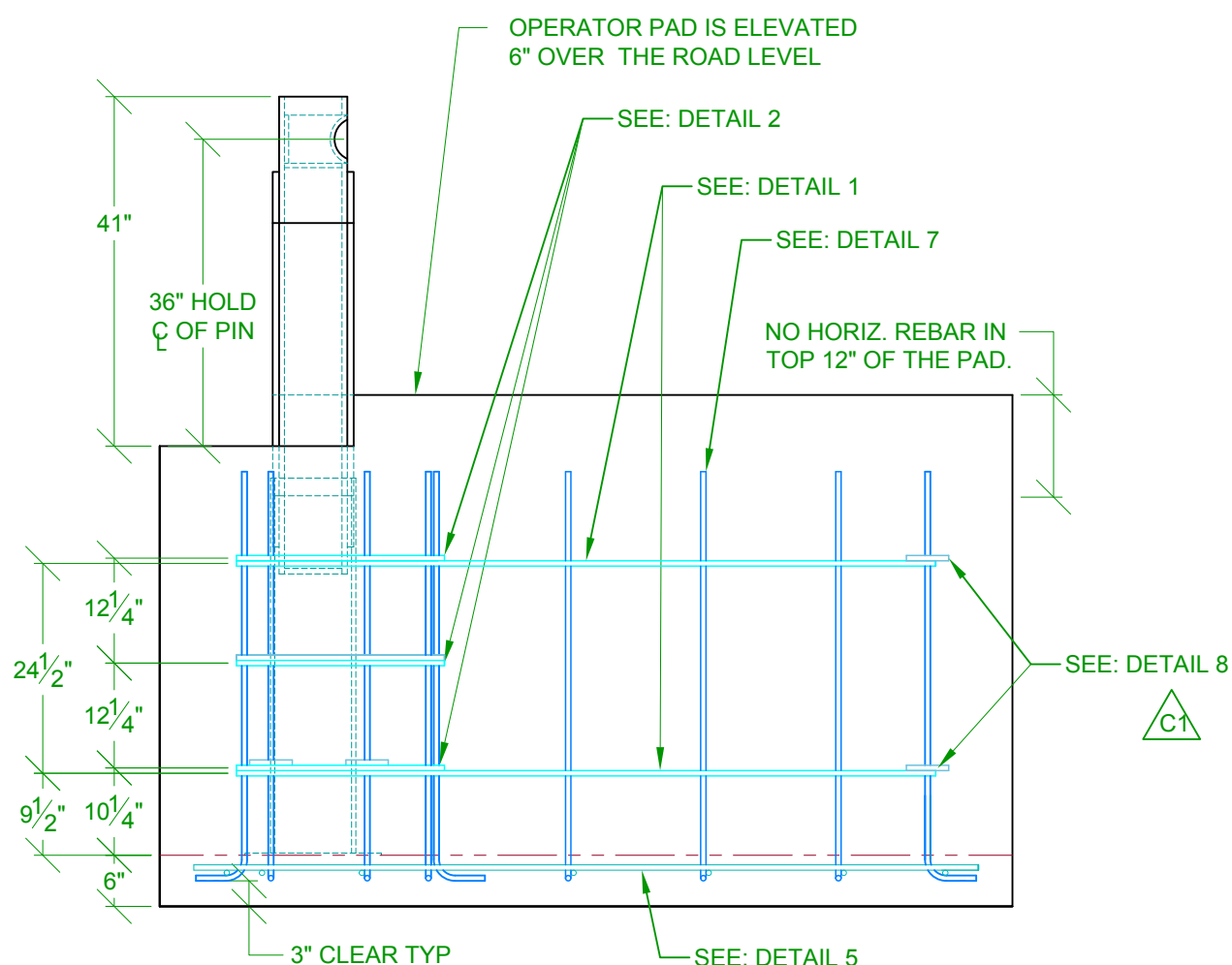
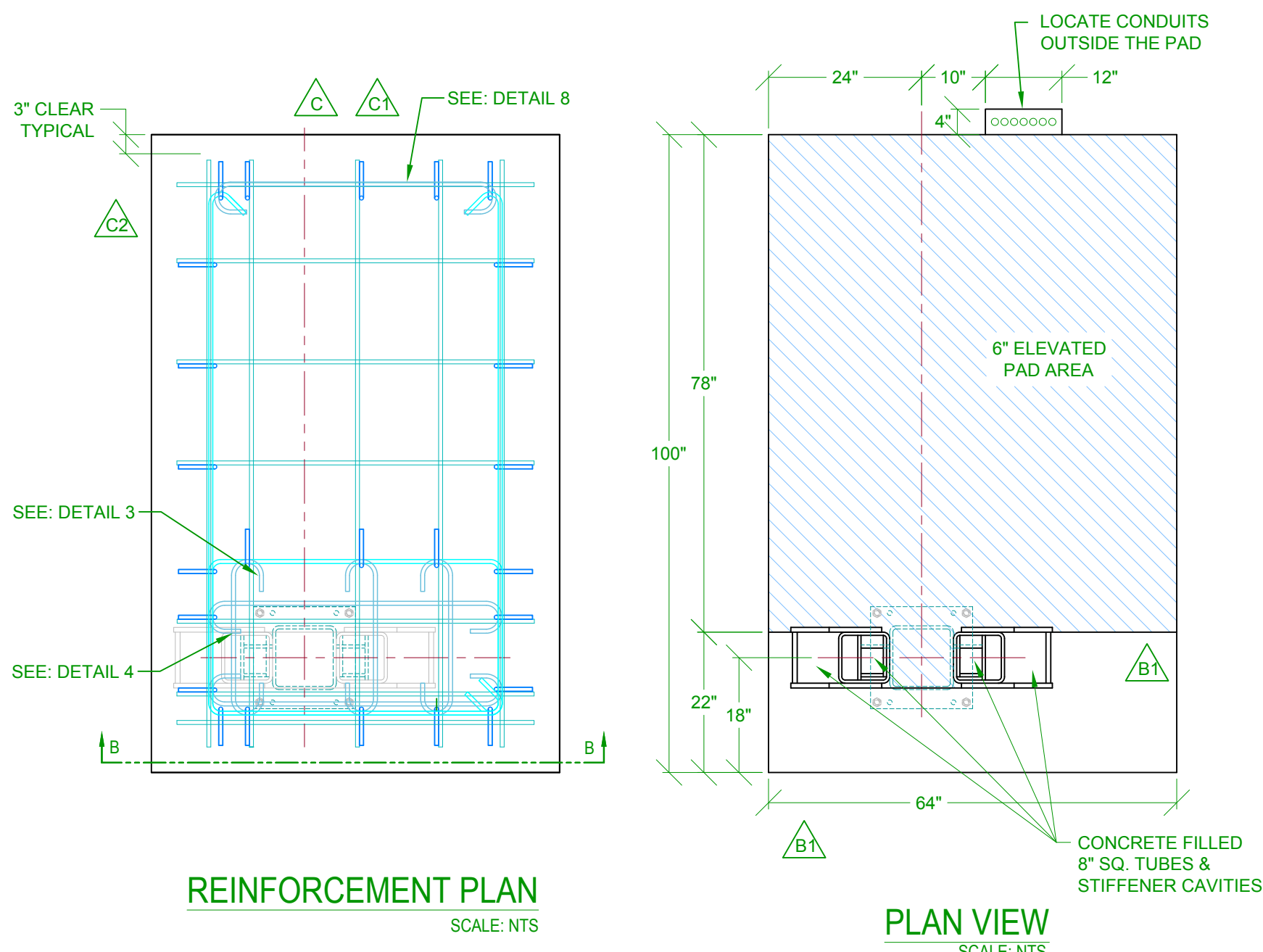
INSTALL REBAR ITEMS 5, 6, AND 7 WITH FIRST 6" CONC. LEVELING PAD POUR, BEFORE INSERTING THE STEEL BOLSTER ASSEMBLY AND FINAL REBAR.

ALL CONCRETE SHALL BE A CONTROLLED STONE GRAVEL MIX PRODUCED, TESTED, TRANSPORTED, PROTECTED, AND PLACED IN ACCORDANCE WITH THE LATEST AMERICAN CONCRETE INSTITUTE RECOMMENDATIONS. FOLLOW ACI RECOMMENDATIONS FOR CURING AND MIX DESIGN WITH CONSIDERATION FOR CLIMATE AND CONDITIONS.

OPTIMUM CONCRETE MIX: 4000 PSI COMPRESSIVE STRENGTH.  
 MINIMUM 600 LB./CU.YD. CEMENT CONTENT  
 MAXIMUM 0.50 WATER CONTENT.  
 6% AIR CONTENT  
 4" SLUMP

REINFORCING STEEL SHALL BE DEFORMED BARS (ASTM A-615) WITH A MINIMUM YIELD STRENGTH OF 60,000 PSI.

CHAMFER ALL EXPOSED CONCRETE EDGES 3/4".



Rev.:	Revisions:	Date:	Drn. By:	Ckd. By:	Rev.:	Revisions:	Date:	Drn. By:	Ckd. By:
F	STRAIGHT REBAR #5 WAS 94" LG. & #6 WAS 58" LG.	07/18/14	MKS	EGS	C	Changed the rebar style from T1 to S3 per ECR 010-13	1/28/13	SLD	KLL
E	ADDED NOTE THAT ALL REBAR IS TO BE #5	12/12/13	MKS	DMR	B3	Changed the rebar style	12/27/12	SLD	KLL
D	L/H in titleblock was wrong - corrected the hand to R/H	10/03/13	MKS	DMR	B2	Changed leveling pad from 3" to 6"	08/24/12	MKS	DMR
C2	Changed location of Item 7 hook	1/28/13	SLD	KLL	B1	Changed pad shape	08/24/12	MKS	DMR
C1	Added rebar hook	1/28/13	SLD	KLL	A	Revised - Engineered K4 Crash Foundation Details	12/22/08	MKS	DMR

**DO NOT SCALE**

**NOTICE**  
 THE INFORMATION CONTAINED ON THIS DOCUMENT IS CONFIDENTIAL. ANY DISSEMINATION, UNAPPROVED DISCLOSURE OR COPYING OF THIS INFORMATION IS STRICTLY PROHIBITED.

UNLESS OTHERWISE SPECIFIED DIMENSIONS ARE IN INCHES  
 ANGLES ± 1°  
 X/X ± 1/32, XX ± .01, XXX ± .005

Date: 12/27/12  
 Drn. By: SLD  
 Ckd. By: KLL

Dwg.: M-30 FOUNDATION-OperEnd-R/H  
 Title: M-30 SHIELD Crash Gate Foundation-OperEnd

**AG AutoGate**  
 Gate Entry Systems  
 Berlin Heights, Ohio  
 FAX (419) 588-3514