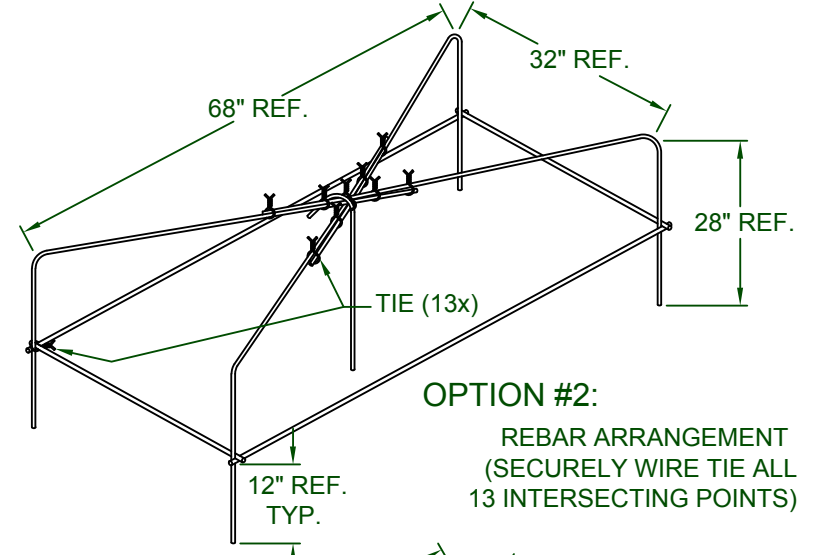
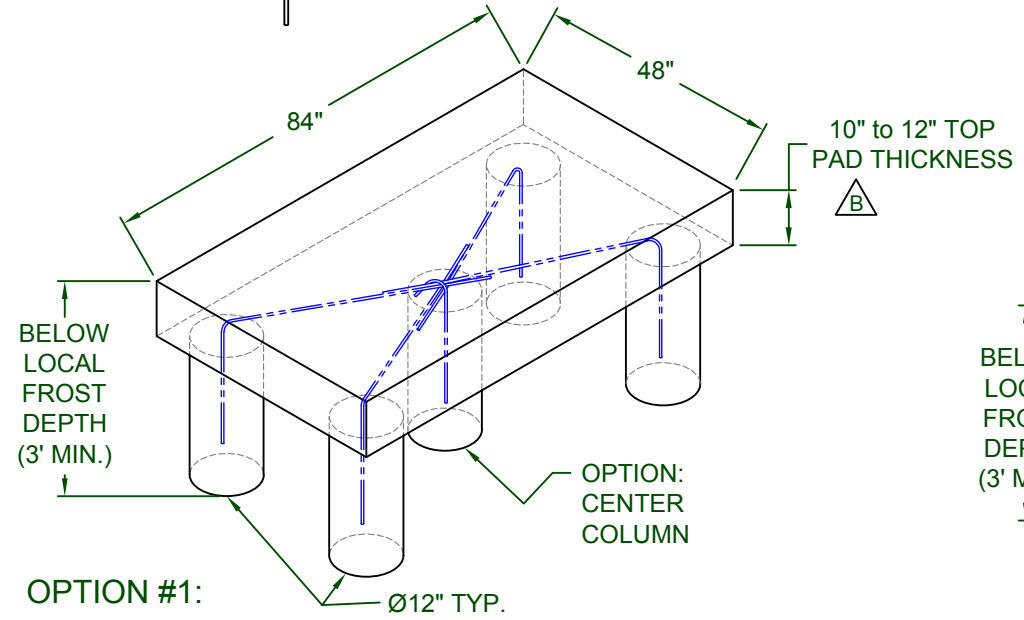


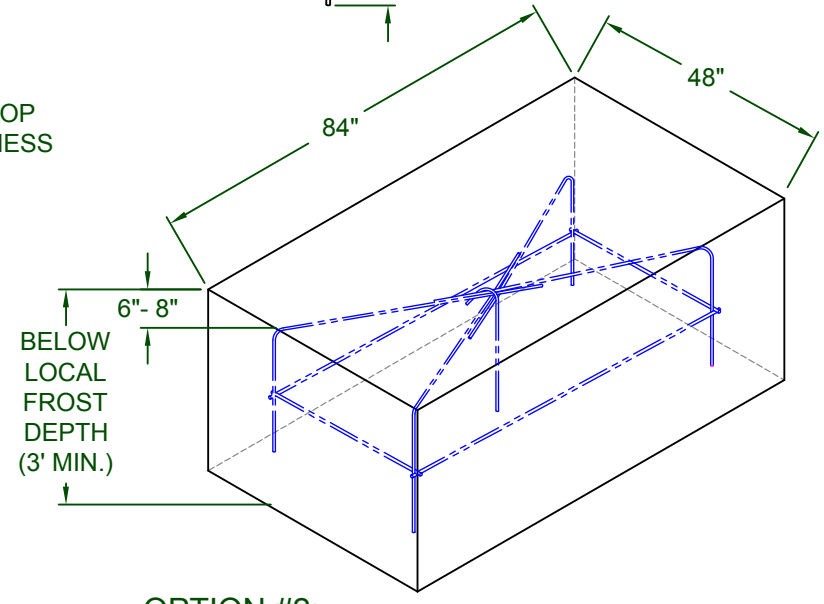
OPTION #1:
REBAR ARRANGEMENT
(SECURELY WIRE TIE ALL
9 INTERSECTING POINTS)



OPTION #2:
REBAR ARRANGEMENT
(SECURELY WIRE TIE ALL
13 INTERSECTING POINTS)



OPTION #1:
(4) or (5) MIN. 12" AUGURED HOLES,
WITH WIRE TIED RE-BAR, ON 10" TO 12" TOP PAD



OPTION #2:
FULL CONCRETE PAD WITH TIED RE-BAR WHERE
APPLICABLE PER GOVERNING CODE OR STANDARD.

NOTES:

- 1) ALL PAD DEPTHS SHOULD BE BELOW LOCAL FROST DEPTH
- 2) TOP OF PAD MUST BE FLAT AND LEVEL
- 3) USE REBAR THAT CONFORMS WITH LOCAL CODES OR JOB SPECS.
- 4) REBAR MUST BE INSTALLED 6"-8" BELOW TOP SURFACE.
- 5) CONCRETE COMPRESSIVE STRENGTH MINIMUM 3000 PSI.
- 5) DRAWING IS FOR REFERENCE ONLY, SUPERCEDED BY LOCAL AND SITE GOVERNING CODES

DO NOT SCALE

Rev.:	Description:	Date:	Drn. By:	Ckd. By:
C	ENHANCED REBAR DETAIL	11/5/15	KAY	DMR
B	10" TO 12" PAD THICKNESS WAS 8" TO 10"	01/24/13	SLD	KLL
A	CONDUIT LOCATIONS WERE MOVED OUTSIDE THE PAD	07/18/08	MKS	DMR

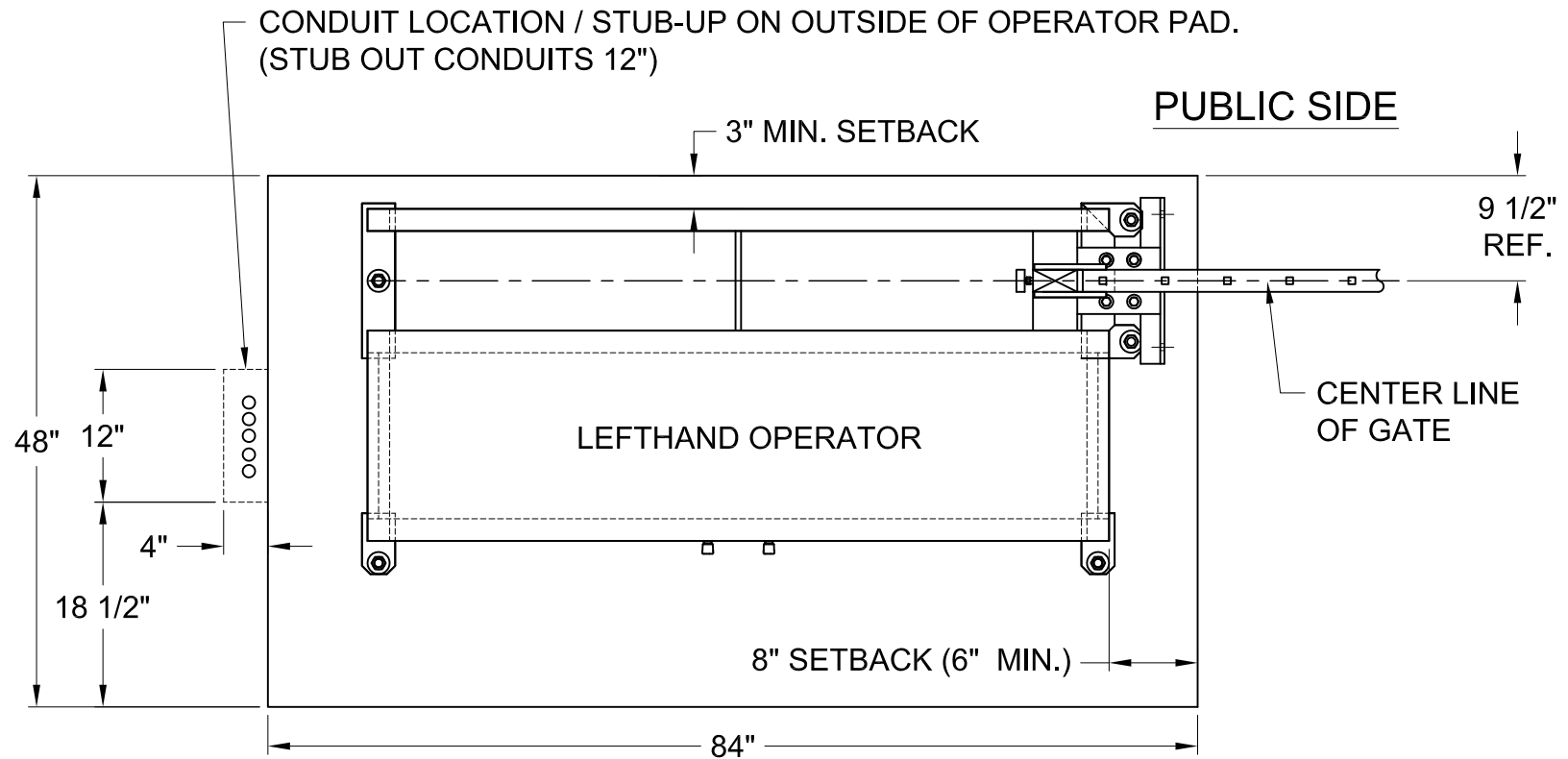
NOTICE
THE INFORMATION CONTAINED
ON THIS DOCUMENT IS
CONFIDENTIAL. ANY
DISSEMINATION, UNAPPROVED
DISCLOSURE OR COPYING OF
THIS INFORMATION IS
STRICTLY PROHIBITED

UNLESS OTHERWISE SPECIFIED
DIMENSIONS ARE IN INCHES
ANGLES ± 1°
XX ± 1/32, .XX ± .01, .XXX ± .005

Date: 12/21/05
Drn. By: MKS
Ckd. By: DMR
Dwg.: 102-P
Title: Operator PAD Layout / Options




LEFTHAND OPERATOR



* NOTE: USE 3/4" CONDUIT ONLY

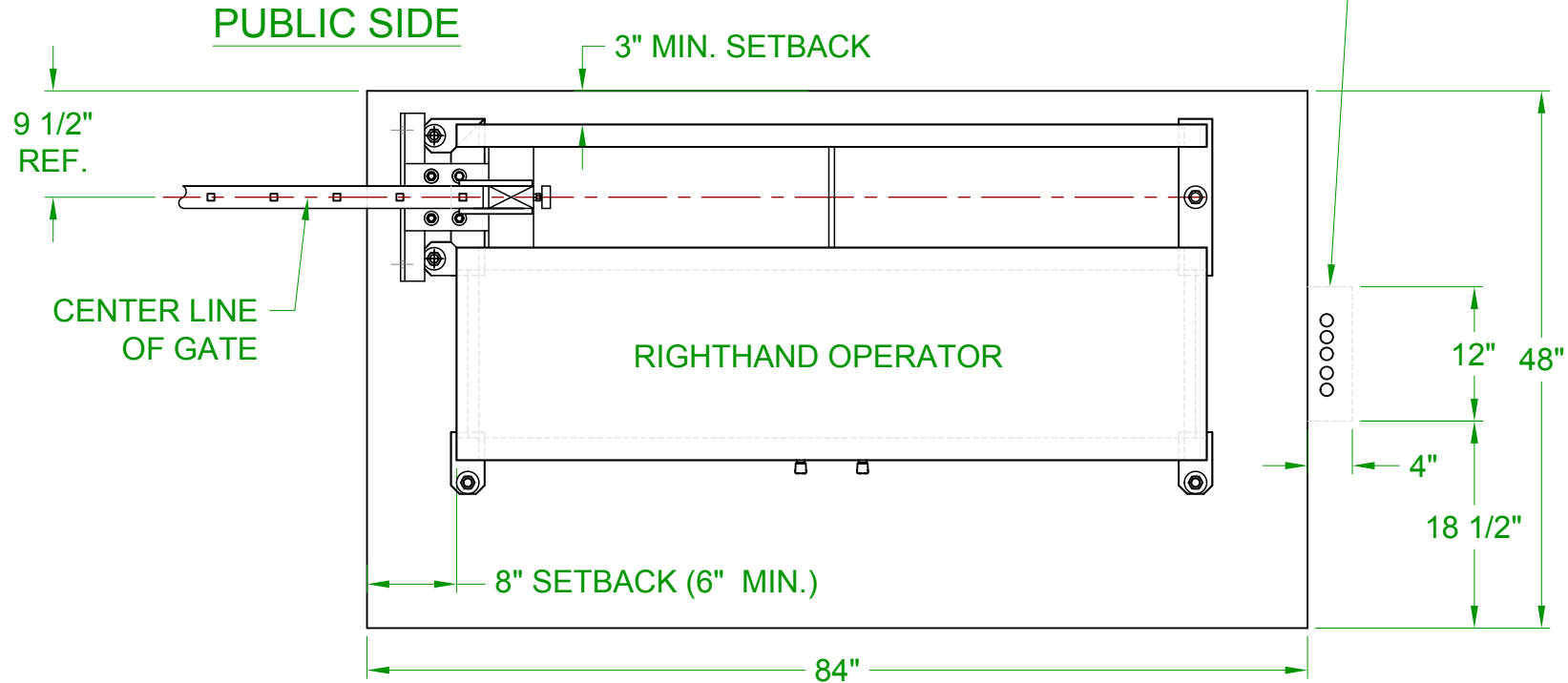
POSSIBLE CONDUITS

- * 120 VAC, MIN. 15 AMP CIRCUIT
- * "ENTRANCE" KEYPAD
- * "EXIT" KEYPAD
- * REVERSING/SAFETY LOOPS
- * FREE EXIT LOOP
- * OFFICE COMMUNICATION
- * IFR BEAM POWER
- * OPTIONAL SPARES

Rev.:	Description:	Date:	Drn. By:	Ckd. By:	NOTICE THE INFORMATION CONTAINED ON THIS DOCUMENT IS CONFIDENTIAL. ANY DISSEMINATION, UNAPPROVED DISCLOSURE OR COPYING OF THIS INFORMATION IS STRICTLY PROHIBITED	Date:	12/07/05
C	LEFTHAND OPERATOR WAS VPL OPERATOR	04/29/15	MKS	KAY		Drn. By: MKS	 Berlin Heights, Ohio FAX (419) 588-3514
B	UPDATED DRAWING	01/23/13	SLD	DMR	Ckd. By: DMR	Dwg.: 102C-L	
A	CONDUIT LOCATIONS WERE MOVED OUTSIDE THE PAD	07/18/08	MKS	DMR	UNLESS OTHERWISE SPECIFIED DIMENSIONS ARE IN INCHES ANGLES ± 1° XX ± 1/32, .XX ± .01, .XXX ± .005	Title: Conduit Pad Location (Lefthand)	

RIGHTHAND OPERATOR

CONDUIT LOCATION / STUB-UP ON OUTSIDE OF OPERATOR PAD.
(STUB OUT CONDUITS 12")



PRIVATE/SECURED SIDE

* NOTE: TYP 3/4" CONDUIT

POSSIBLE CONDUITS

- * 120 VAC, MIN. 15 AMP CIRCUIT
- * "ENTRANCE" KEYPAD
- * "EXIT" KEYPAD
- * REVERSING/SAFETY LOOPS
- * FREE EXIT LOOP
- * OFFICE COMMUNICATION
- * IFR BEAM POWER
- * OPTIONAL SPARES

DO NOT SCALE					
Rev.:	Description:	Date:	Drn. By:	Ckd. By:	
C	RIGHTHAND OPERATOR WAS VPL OPERATOR	04/29/15	MKS	KAY	
B	UPDATED PRINT	1/24/13	SLD	DMR	
A	CONDUIT LOCATIONS WERE MOVED OUTSIDE THE PAD	07/18/08	MKS	DMR	

NOTICE
THE INFORMATION CONTAINED ON THIS DOCUMENT IS CONFIDENTIAL. ANY DISSEMINATION, UNAPPROVED DISCLOSURE OR COPYING OF THIS INFORMATION IS STRICTLY PROHIBITED.

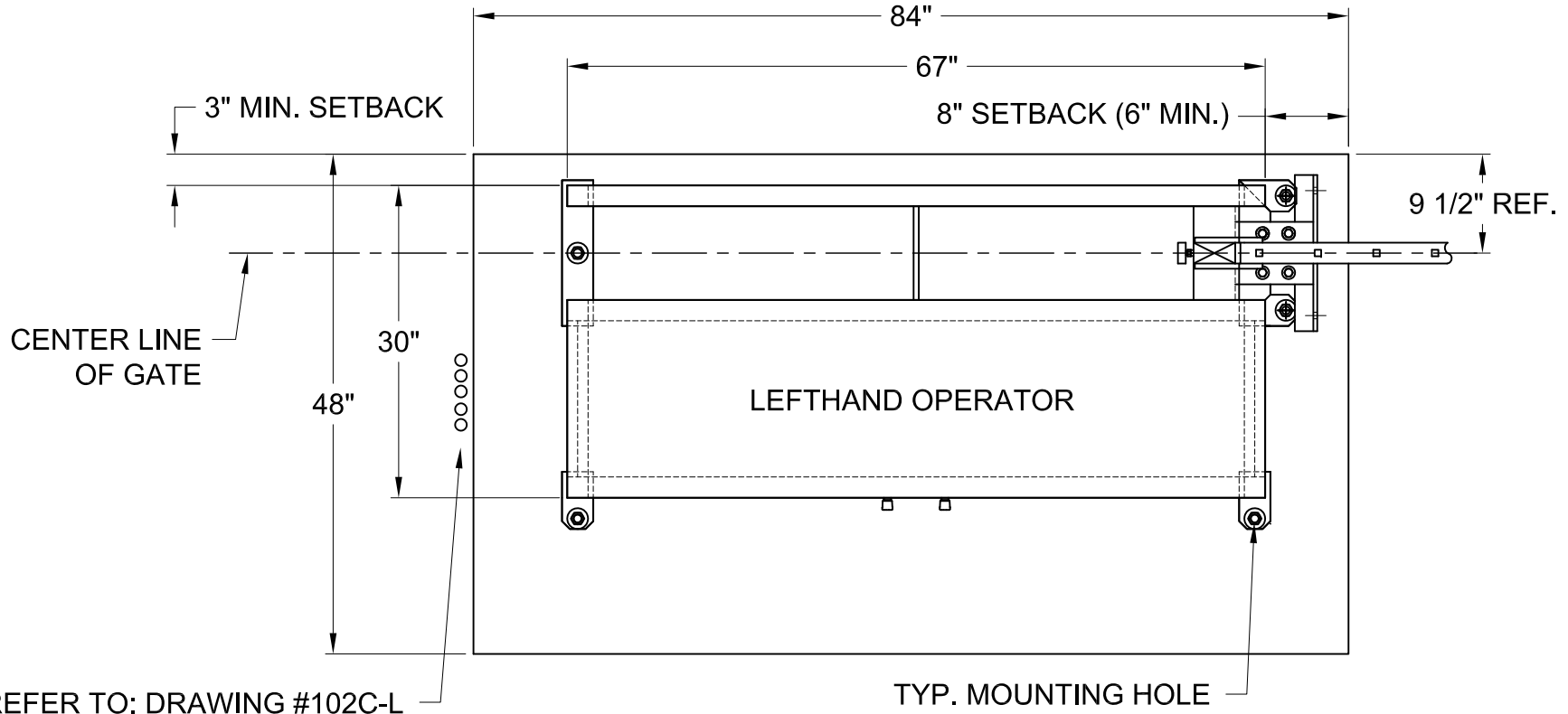
UNLESS OTHERWISE SPECIFIED DIMENSIONS ARE IN INCHES
ANGLES ± 1°
XX ± 1/32, .XX ± .01, .XXX ± .005

Date: 12/07/05
Drn. By: MKS
Ckd. By: DMR
Dwg.: 102C-R
Title: Conduit Pad Location (Righthand)



LEFTHAND OPERATOR (RIGHT HAND IS MIRROR IMAGE)

PUBLIC SIDE



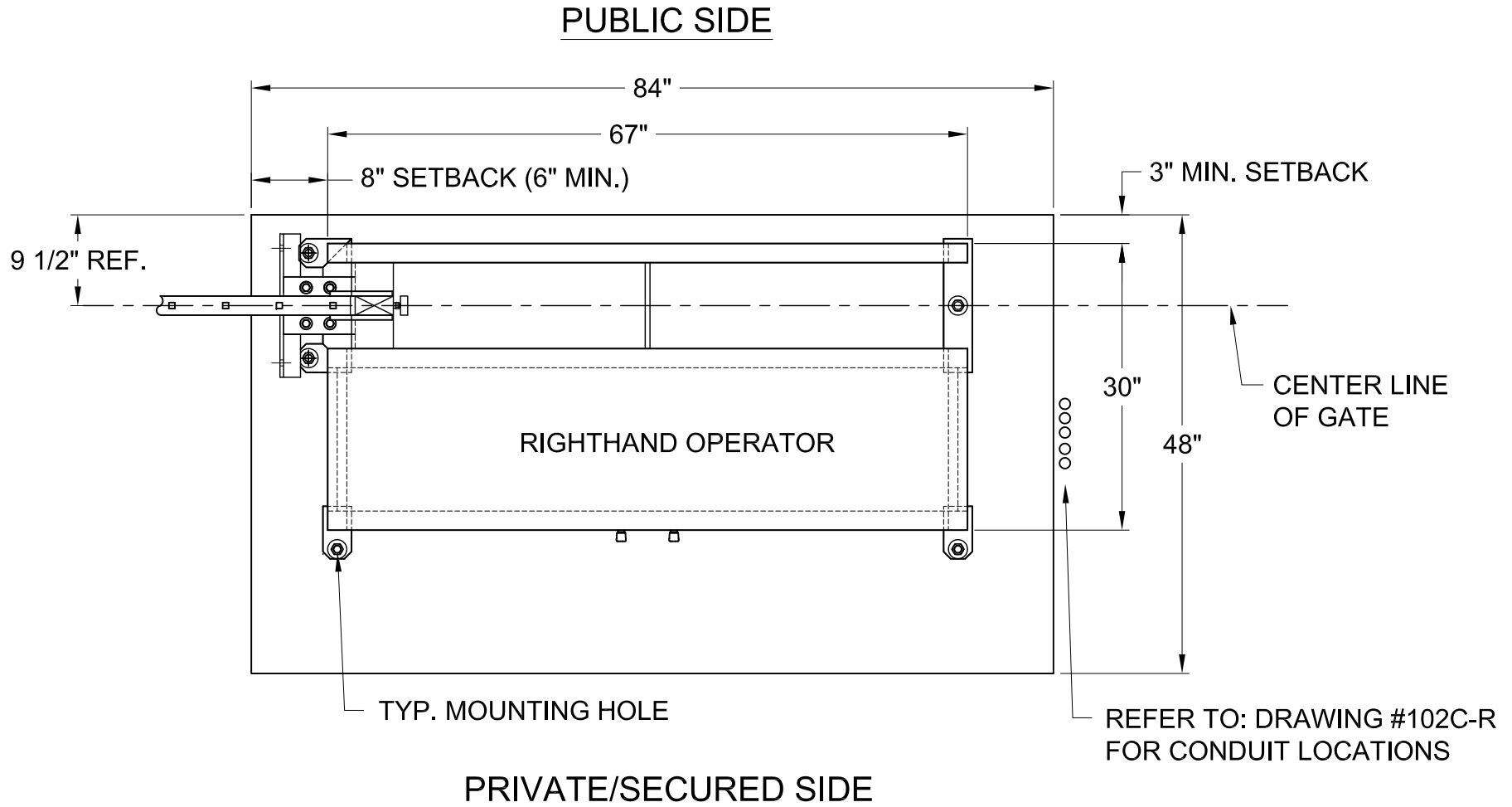
PRIVATE/SECURED SIDE

NOTES:

- 1) PAD DIMENSIONS CAN VARY PER SITE
- 2) LEAVE AT LEAST 3" BETWEEN ANCHOR AND EDGE OF PAD
- 3) ALL PADS MUST BE POURED LEVEL AND BELOW LOCAL FROST LINE DEPTH

Rev.:	Description:	Date:	Drn. By:	Ckd. By:	NOTICE THE INFORMATION CONTAINED ON THIS DOCUMENT IS CONFIDENTIAL. ANY DISSEMINATION, UNAPPROVED DISCLOSURE OR COPYING OF THIS INFORMATION IS STRICTLY PROHIBITED.	Date:	12/07/05	AG AutoGate Gate Entry Systems Berlin Heights, Ohio FAX (419) 588-3514
DO NOT SCALE						Dwn. By:	MKS	
D	LEFTHAND OPERATOR WAS VPL OPERATOR	04/29/15	MKS	KAY	UNLESS OTHERWISE SPECIFIED DIMENSIONS ARE IN INCHES ANGLES ± 1° X/X ± 1/32, .XX ± .01, .XXX ± .005	Ckd. By:	DMR	Dwg.: 102-L
C	UPDATED PRINT	1/23/13	SLD	DMR		Title:	Standard Pad Layout (Lefthand)	
B	REMOVED "STUB CONDUITS UNDER OPERATOR WHEN POSSIBLE" NOTE	02/04/10	MKS	DMR				
A	CONDUIT LOCATIONS WERE MOVED OUTSIDE THE PAD	07/18/08	MKS	DMR				

RIGHTHAND OPERATOR



NOTES:

- 1) PAD DIMENSIONS CAN VARY PER SITE
- 2) LEAVE AT LEAST 3" BETWEEN ANCHOR AND EDGE OF PAD
- 3) ALL PADS MUST BE POURED LEVEL AND BELOW LOCAL FROST LINE DEPTH

Rev.:	Description:	Date:	Drn. By:	Ckd. By:	NOTICE	Date:	
D	RIGHTHAND OPERATOR WAS VPL OPERATOR	04/29/15	MKS	KAY	THE INFORMATION CONTAINED ON THIS DOCUMENT IS CONFIDENTIAL. ANY DISSEMINATION, UNAPPROVED DISCLOSURE OR COPYING OF THIS INFORMATION IS STRICTLY PROHIBITED.	12/07/05	
C	UPDATED DRAWING	1/24/13	SLD	DMR		Drn. By: MKS	
B	REMOVED "STUB CONDUITS UNDER OPERATOR WHEN POSSIBLE" NOTE	02/04/10	MKS	DMR	UNLESS OTHERWISE SPECIFIED DIMENSIONS ARE IN INCHES ANGLES ± 1° XX ± 1/32, .XX ± .01, .XXX ± .005	Ckd. By: DMR	
A	CONDUIT LOCATIONS WERE MOVED OUTSIDE THE PAD	07/18/08	MKS	DMR		Dwg.: 102-R	
						Title: Standard Pad Layout (Righthand)	

