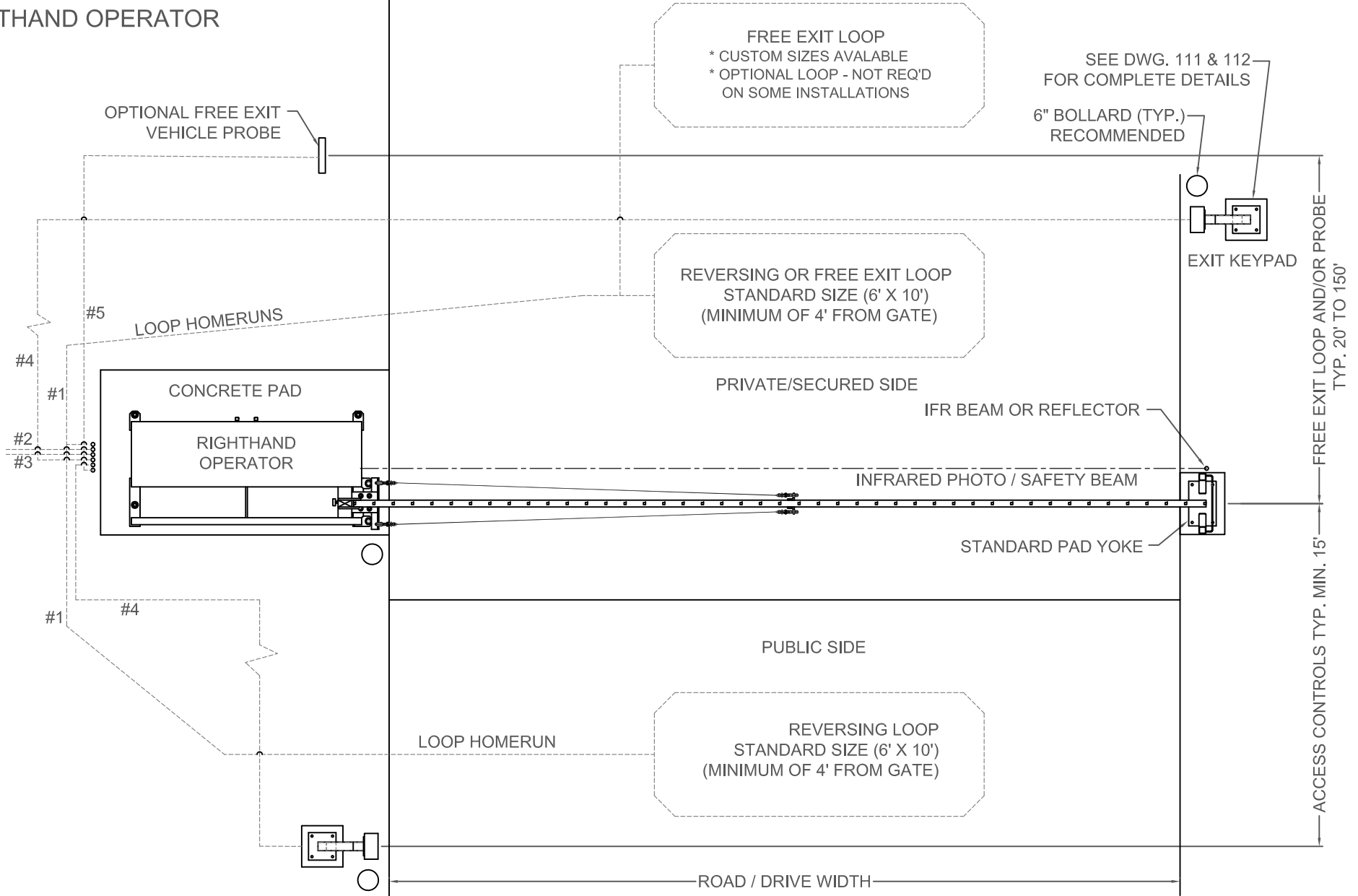


RIGHTHAND OPERATOR



FREE EXIT LOOP
 * CUSTOM SIZES AVAILABLE
 * OPTIONAL LOOP - NOT REQ'D ON SOME INSTALLATIONS

SEE DWG. 111 & 112 FOR COMPLETE DETAILS

6" BOLLARD (TYP.) RECOMMENDED

REVERSING OR FREE EXIT LOOP
 STANDARD SIZE (6' X 10')
 (MINIMUM OF 4' FROM GATE)

PRIVATE/SECURED SIDE

IFR BEAM OR REFLECTOR

INFRARED PHOTO / SAFETY BEAM

STANDARD PAD YOKE

PUBLIC SIDE

REVERSING LOOP
 STANDARD SIZE (6' X 10')
 (MINIMUM OF 4' FROM GATE)

LOOP HOMERUN

ROAD / DRIVE WIDTH

NORMALLY, GATE LENGTH MUST EXCEED THIS WIDTH BY AT LEAST 12"
 (FOR CURB APPLICATIONS - SEE: DWG. #120-C & 151-R)

FREE EXIT LOOP AND/OR PROBE TYP. 20' TO 150'
 ACCESS CONTROLS TYP. MIN. 15'

- TYPICAL CONDUIT RUNS**
- #1. LOOP "HOMERUNS" (HR)
 - #2. 120V POWER SUPPLY (20AMP CIRCUIT)
 - #3. ACCESS SIGNAL TO REMOTE (IF APPLICABLE)
 - #4. KEYPAD/CARD/PHONE SIGNAL & POWER
 - #5. IRB POWER/PROBE HR (IF APPLICABLE)

Rev.:	Description:	Date:	Drn. By:	Ckd. By:
C	KEYPADS MOVED TO OPPOSITE SIDES OF DRIVE	03/29/23	JWS	DSF
B	RIGHTHAND OPERATOR WAS VPL OPERATOR	04/29/15	MKS	KAY
A	UPDATED DRAWING	01/22/13	SLD	KLL

NOTICE

THE INFORMATION CONTAINED ON THIS DOCUMENT IS CONFIDENTIAL. ANY DISSEMINATION, UNAPPROVED DISCLOSURE OR COPYING OF THIS INFORMATION IS STRICTLY PROHIBITED.

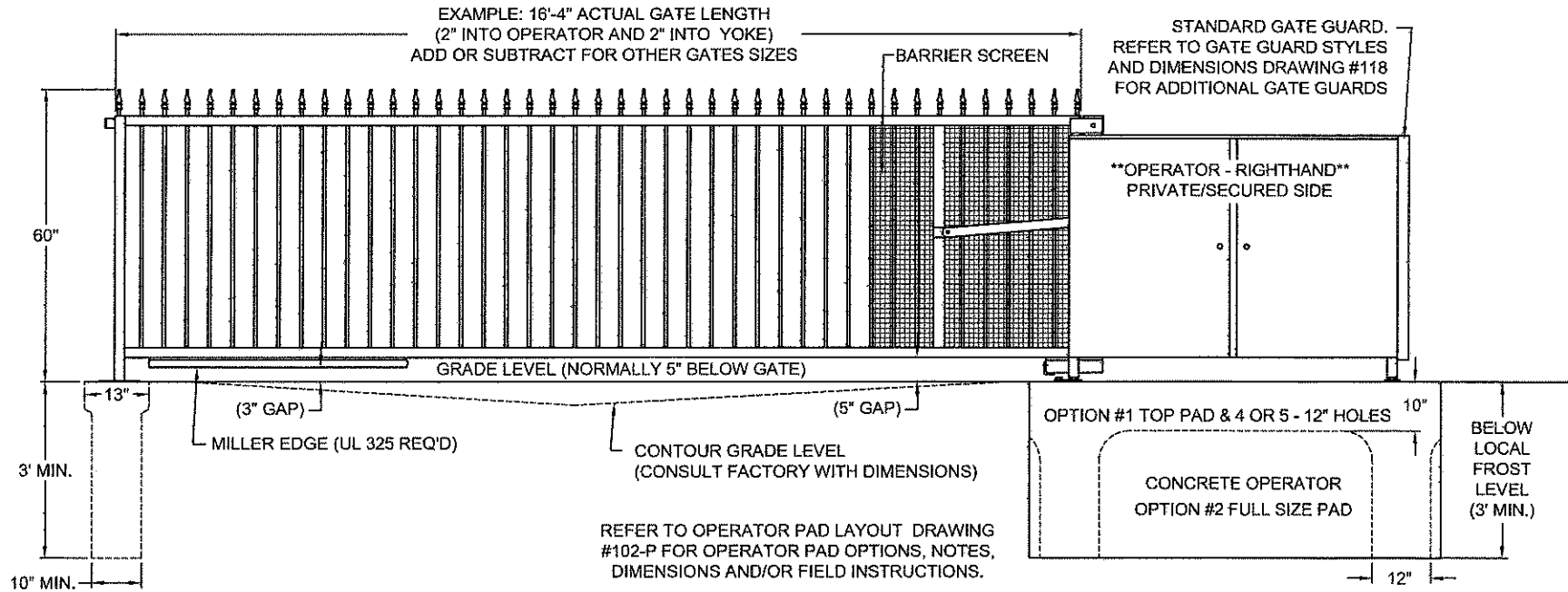
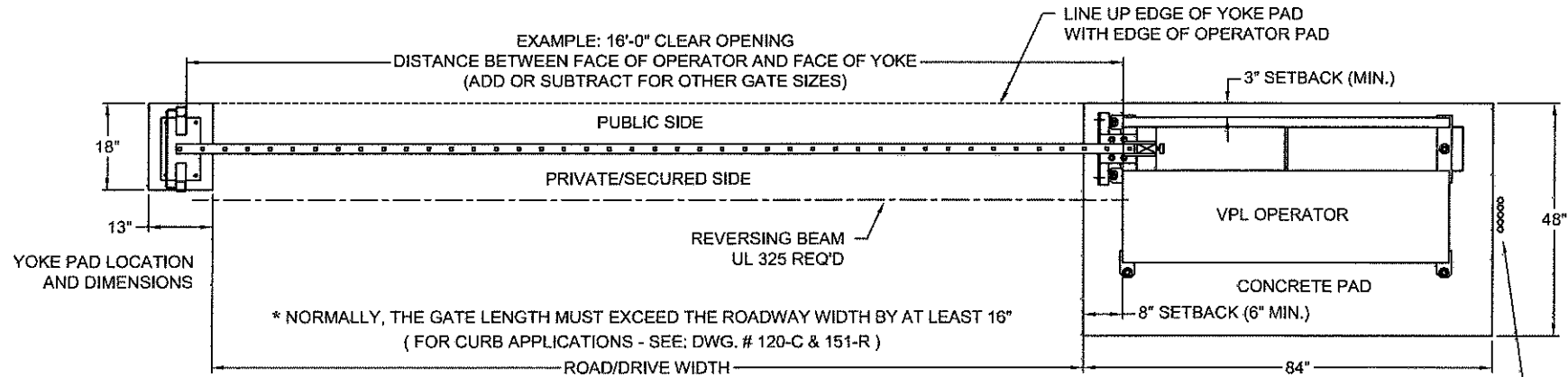
UNLESS OTHERWISE SPECIFIED DIMENSIONS ARE IN INCHES ANGLES ± 1°
 X/X ± 1/32, .XX ± .01, .XXX ± .005

Date:	12/20/05
Drn. By:	MKS
Ckd. By:	DMR
Dwg.:	100-R
Title:	Operator & Accessory Site Layout (R/H)



RIGHTHAND OPERATOR

EXAMPLE SHOWN: 16' X 5' BUCKEYE STYLE 500 GATE
(GATE SIZE AND STYLE MAY VARY)



PAD FOR YOKE STYLES "E" & "F" ONLY.
REFER TO YOKE STYLES DRAWING #105
FOR ADDITIONAL MOUNTING METHODS,
DIMENSIONS AND/OR INSTRUCTIONS.

Rev.:	Description:	Date:	Drn. By:	Ckd. By:
A	UPDATED DRAWING	01/22/13	SLD	KLL

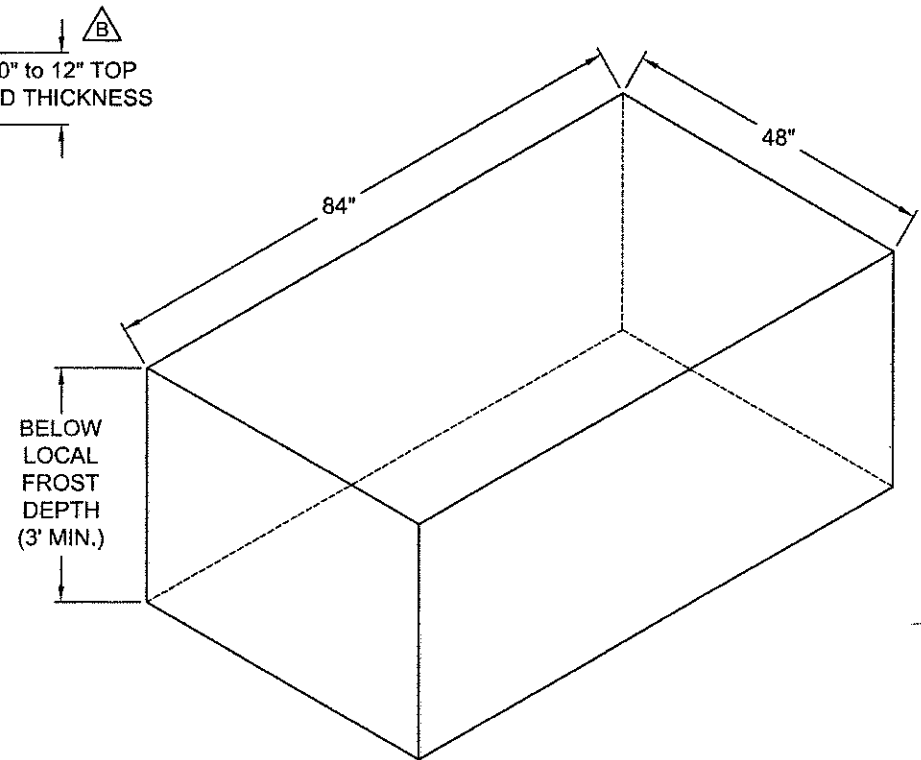
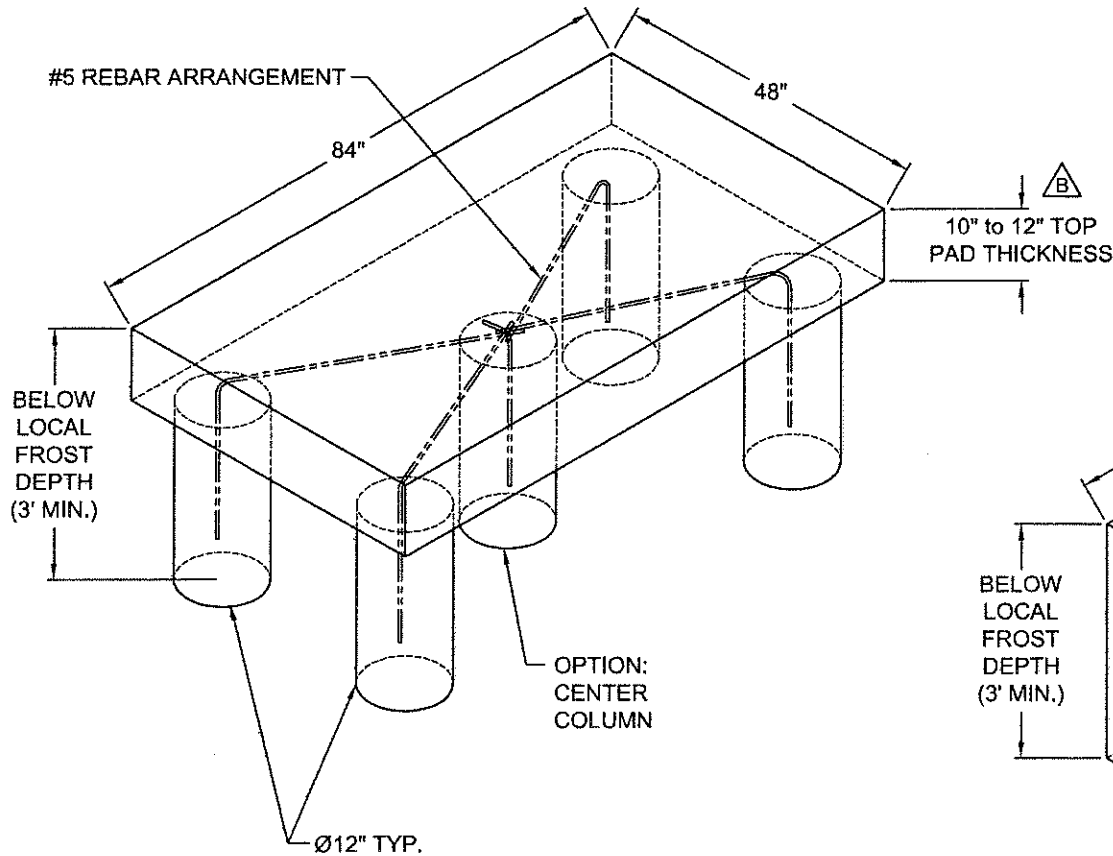
NOTICE
THE INFORMATION CONTAINED
ON THIS DOCUMENT IS
CONFIDENTIAL. ANY
DISSEMINATION, UNAPPROVED
DISCLOSURE OR COPYING OF
THIS INFORMATION IS
STRICTLY PROHIBITED.
UNLESS OTHERWISE SPECIFIED
DIMENSIONS ARE IN INCHES
ANGLES ± 1°
XX ± 1/32, XX ± .01, XXX ± .005

Date: 12/21/05
Drn. By: MKS
Ckd. By: DMR
Dwg.: 101-R
Title: Standard Layout Dimensions - Righthand



OPTION #1:

(4) or (5) MIN. 12" AUGURED HOLES, RE-BAR, AND A 10" TO 12" TOP PAD



OPTION #2:

FULL CONCRETE PAD WITH RE-BAR WHERE APPLICABLE PER GOVERNING CODE OR STANDARD.

NOTES:

- 1) ALL PAD DEPTHS SHOULD BE BELOW LOCAL FROST DEPTH
- 2) TOP OF PAD MUST BE FLAT AND LEVEL
- 3) USE REBAR THAT CONFORMS WITH LOCAL CODES OR JOB SPECS.

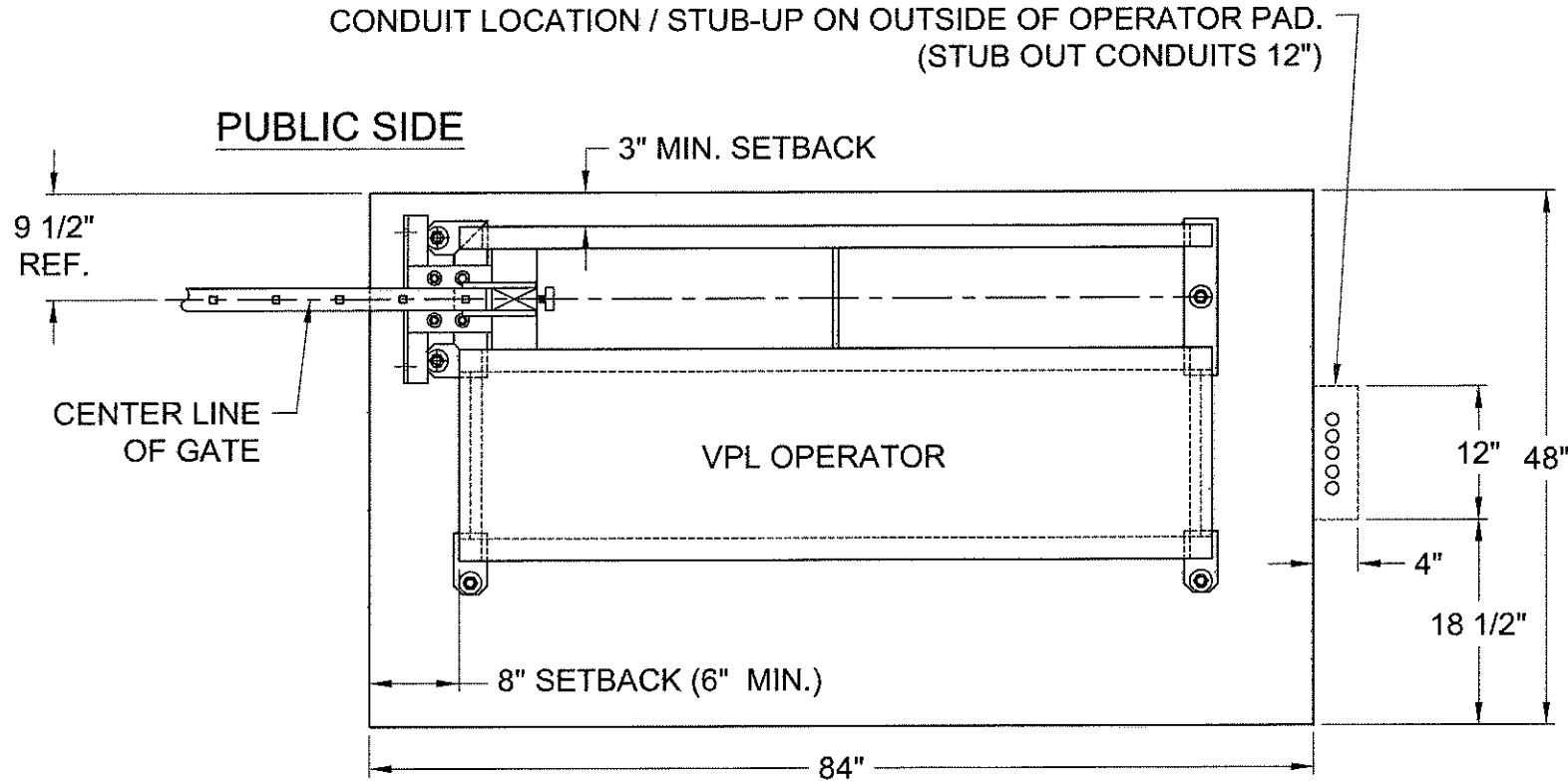
DO NOT SCALE					
Rev.:	Description:	Date:	Drn. By:	Ckd. By:	
B	10" TO 12" PAD THICKNESS WAS 8" TO 10"	01/24/13	SLD	KLL	
A	CONDUIT LOCATIONS WERE MOVED OUTSIDE THE PAD	07/18/08	MKS	DMR	

NOTICE
 THE INFORMATION CONTAINED ON THIS DOCUMENT IS CONFIDENTIAL. ANY DISSEMINATION, UNAPPROVED DISCLOSURE OR COPYING OF THIS INFORMATION IS STRICTLY PROHIBITED.
 UNLESS OTHERWISE SPECIFIED DIMENSIONS ARE IN INCHES
 ANGLES ± 1°
 XX ± 1/32, .XX ± .01, .XXX ± .005

Date: 12/21/05
 Drn. By: MKS
 Ckd. By: DMR
 Dwg.: 102-P
 Title: Operator PAD Layout / Options

AG AutoGate
 Gate Entry Systems
 Berlin Heights, Ohio
 FAX (419) 588-3514

RIGHTHAND OPERATOR



PRIVATE/SECURED SIDE

* NOTE: USE 3/4" CONDUIT ONLY

POSSIBLE CONDUITS

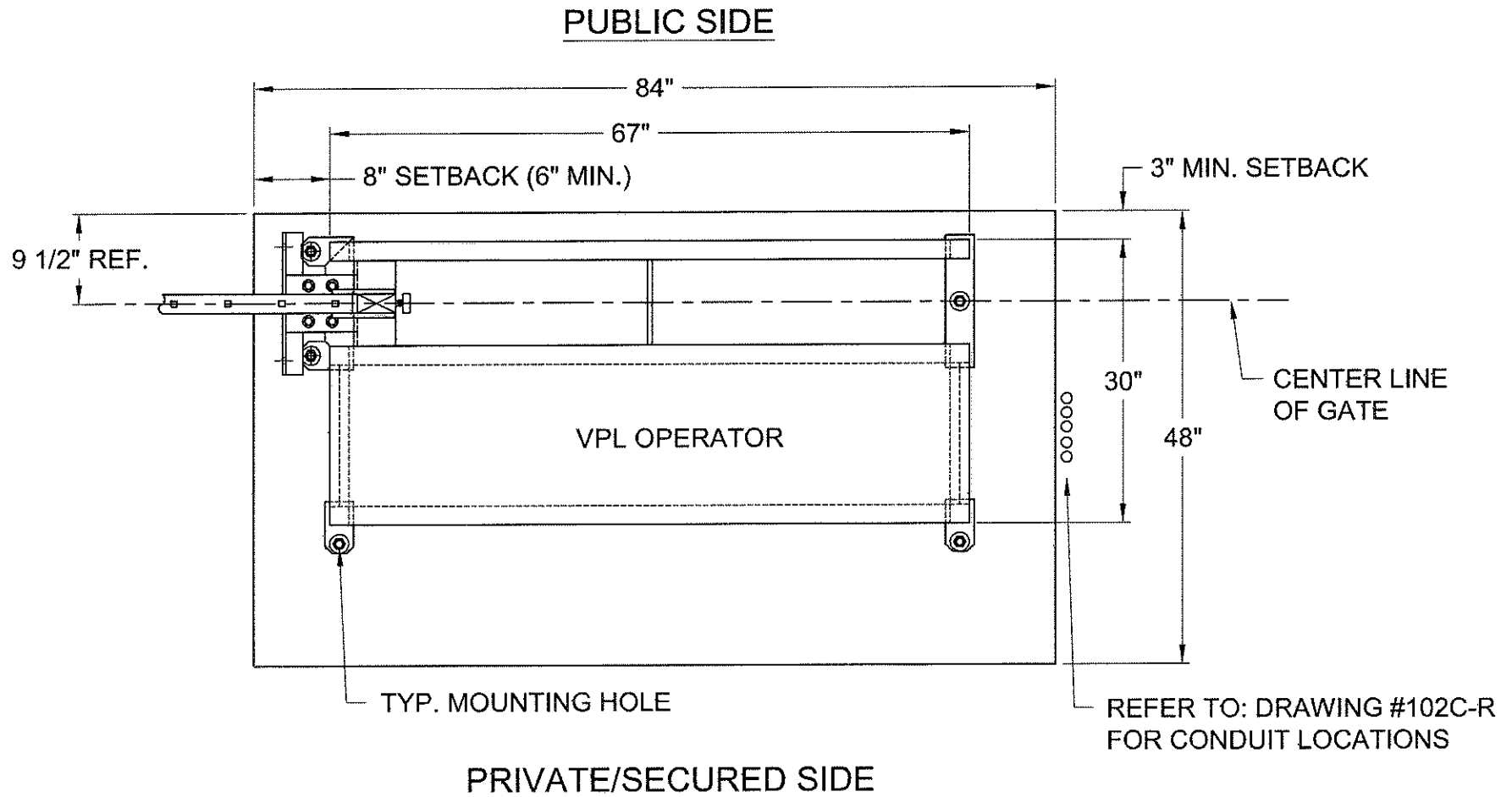
- * 120 VAC, MIN. 15 AMP CIRCUIT
- * "ENTRANCE" KEYPAD
- * "EXIT" KEYPAD
- * REVERSING/SAFETY LOOPS
- * FREE EXIT LOOP
- * OFFICE COMMUNICATION
- * IFR BEAM POWER
- * OPTIONAL SPARES

Rev.:	Description:	Date:	Drn. By:	Ckd. By:
B	Updated drawing	1/24/13	SLD	
A	Conduit locations were moved outside the pad	07/18/08	MKS	

DO NOT SCALE		NOTICE THE INFORMATION CONTAINED ON THIS DOCUMENT IS CONFIDENTIAL. ANY DISSEMINATION, UNAPPROVED DISCLOSURE OR COPYING OF THIS INFORMATION IS STRICTLY PROHIBITED.	Date: 12/07/05
			Drn. By: MKS
			Ckd. By: DMR
			Dwg.: 102C-R
			Title: Conduit Pad Location (Righthand)



RIGHTHAND OPERATOR



NOTES:

- 1) PAD DIMENSIONS CAN VARY PER SITE
- 2) LEAVE AT LEAST 3" BETWEEN ANCHOR AND EDGE OF PAD
- 3) ALL PADS MUST BE POURED LEVEL AND BELOW LOCAL FROST LINE DEPTH

Rev.:	Description:	Date:	Drn. By:	Ckd. By:
C	Updated drawing	1/24/13	SLD	
B	Removed "Stub conduits under operator when possible" note	02/04/10	MKS	
A	Conduit locations were moved outside the pad	07/18/08	MKS	

DO NOT SCALE

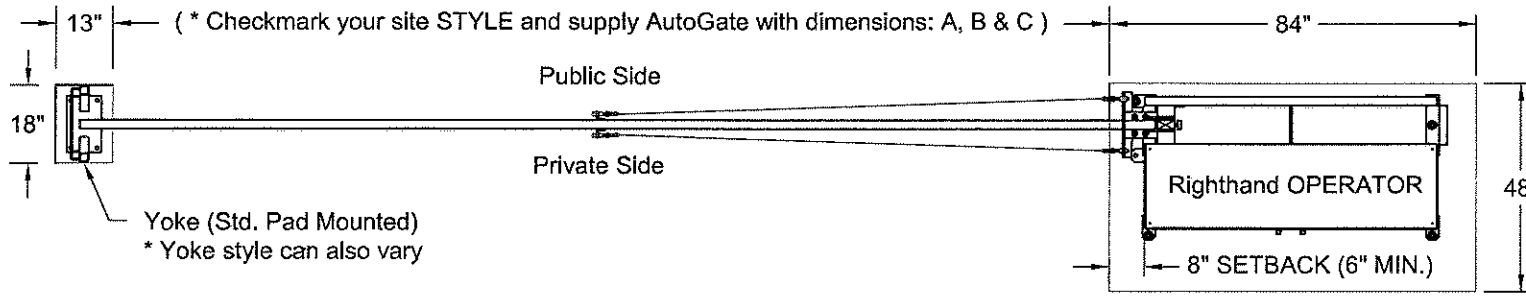
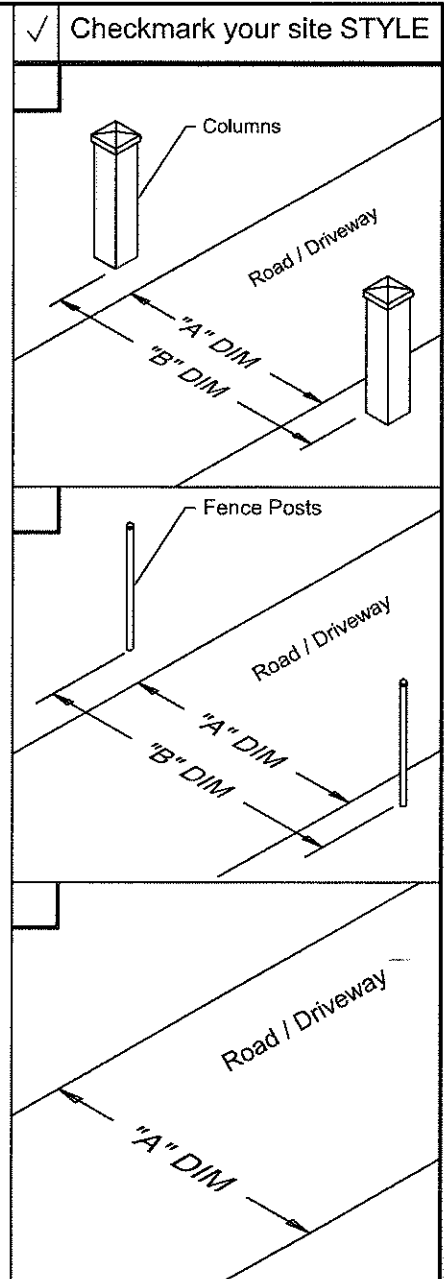
NOTICE
 THE INFORMATION CONTAINED ON THIS DOCUMENT IS CONFIDENTIAL. ANY DISSEMINATION, UNAPPROVED DISCLOSURE OR COPYING OF THIS INFORMATION IS STRICTLY PROHIBITED.
 UNLESS OTHERWISE SPECIFIED DIMENSIONS ARE IN INCHES ANGLES ± 1°
 X/X ± 1/32, XX ± .01, XXX ± .005

Date: 12/07/05
 Drn. By: MKS
 Ckd. By: DMR

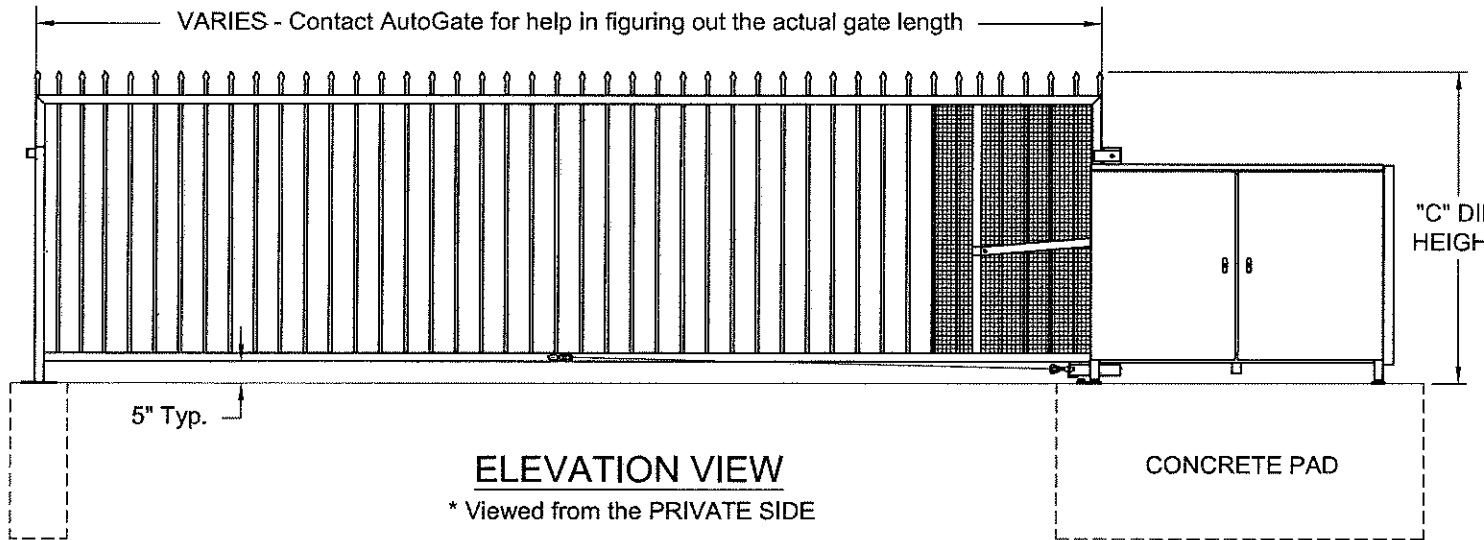


Dwg.: 102-R
 Title: Standard Pad Layout (Righthand)

DIM	DESCRIPTION	MEASUREMENT
"A"	Road/driveway width or clear opening across the road/driveway (Choose a site "STYLE")	
"B"	Face to face of fence posts or pillars (Checkmark a box next to a applicable site "STYLE")	
"C"	Existing gate height, matching fence height or new VPL gate height. (Contact AutoGate)	




PLAN VIEW



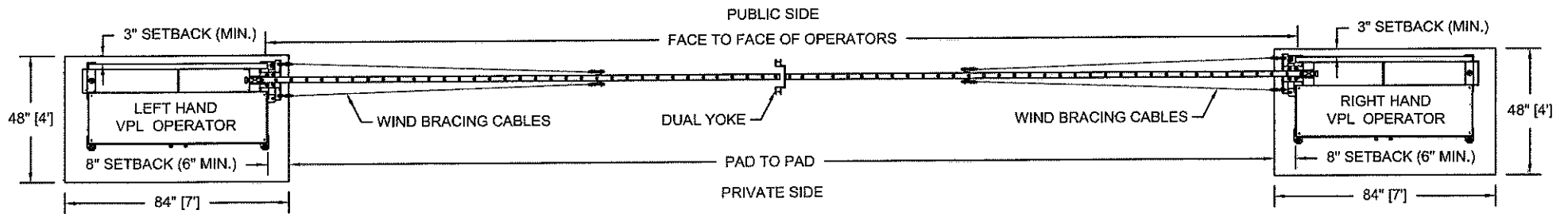
ELEVATION VIEW

* Viewed from the PRIVATE SIDE

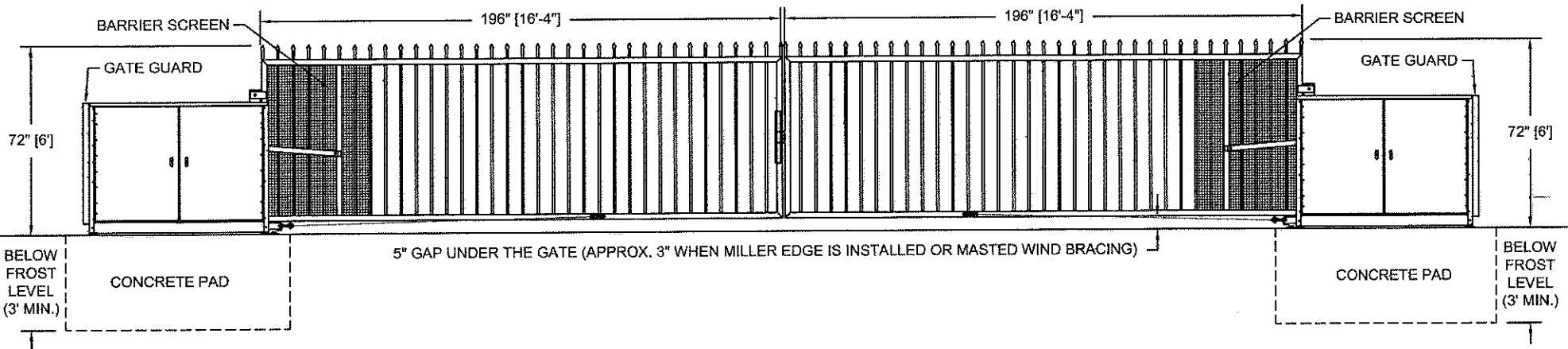
* **Note:** The customer is responsible for indicating (to AutoGate) any variance in the road or driveway grading. If the road has curbs, or any slope in the grade, print out and fill in dimensions on: Dwg. # 120, 121 or 122.

Date: 06/02/06	 AutoGate Gate Entry Systems
Drn. By: MKS	
Ckd. By: DMR	Berlin Heights, Ohio FAX (419) 588-3514
Dwg.: 123	
Title: Righthand VPL Profile (No Curbs or Slopes)	

COMPLETE AND FAX BACK TO AUTOGATE: (419) 588-3514



PLAN VIEW



ELEVATION VIEW

* VIEWED FROM THE PRIVATE SIDE, LOOKING OUT *

Rev.:	Description:	Date:	Drn. By:	Ckd. By:
A	General revisions, updating drawing	1/22/2013	SLD	KLL

NOTICE
 THE INFORMATION CONTAINED ON THIS DOCUMENT IS CONFIDENTIAL. ANY DISSEMINATION, UNAPPROVED DISCLOSURE OR COPYING OF THIS INFORMATION IS STRICTLY PROHIBITED.
 UNLESS OTHERWISE SPECIFIED DIMENSIONS ARE IN INCHES
 ANGLES ± 1°
 X/X ± 1/32, XX ± .01, XXX ± .005

Date: 07/01/09
 Drn. By: MKS
 Ckd. By: .
 Dwg.: 154
 Title: Primary/Secondary Dual Gate - Site Layout

